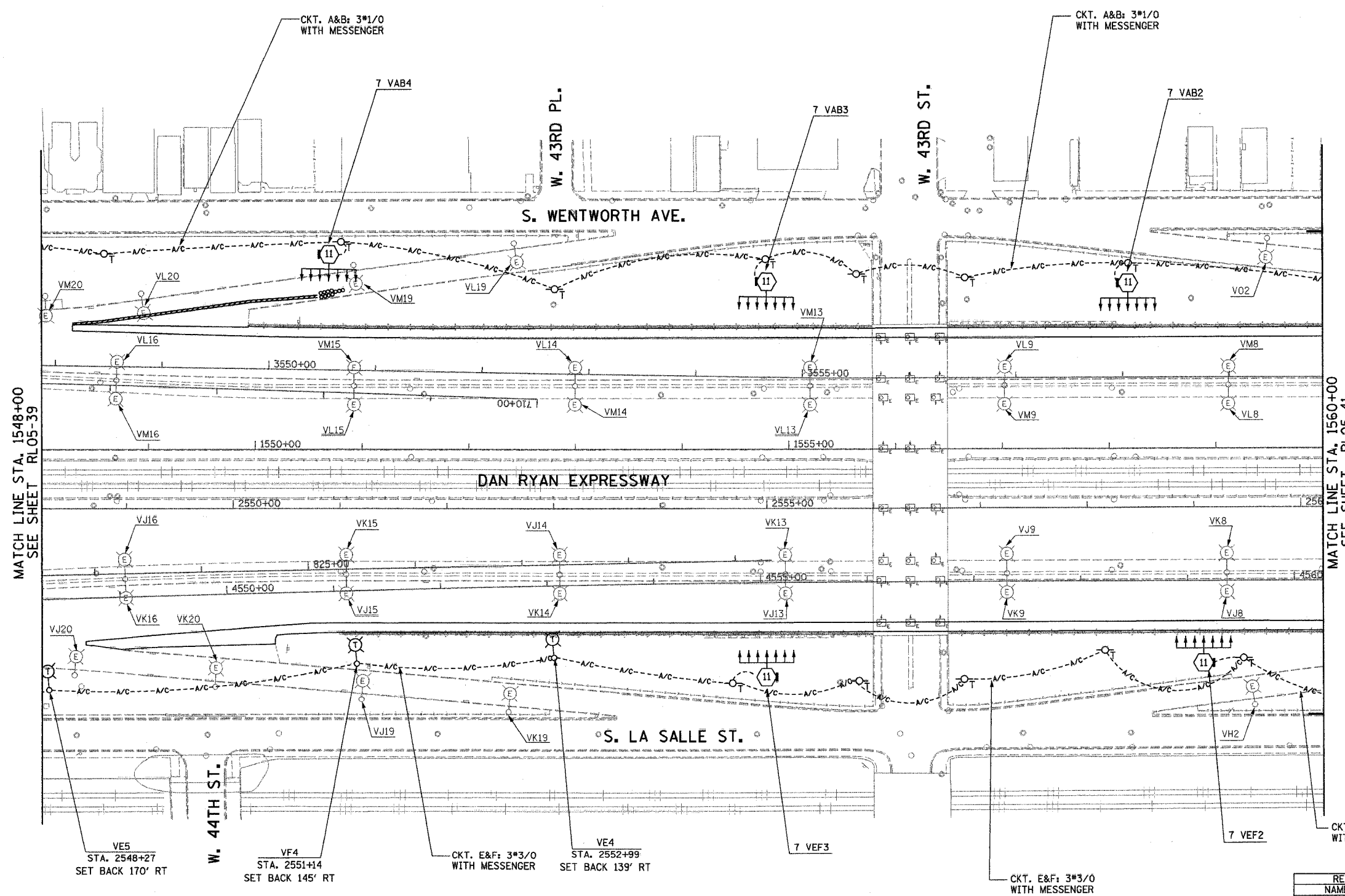


F.A.I. RTE.	SECTION	COUNTY	TOTAL SHEETS	SHEET NO.
94/90	2003-0311	COOK	976	153
STA. 1548+00		TO STA. 1560+00		
FED. ROAD DIST. NO.	ILLINOIS	FED. AID PROJECT		

62583



NOTES:

- SEE DRAWINGS ME-01 AND ME-02 FOR ELECTRICAL SYMBOLS AND ABBREVIATIONS.
- UNLESS NOTED OTHERWISE, ALL ITEMS AND WORK SHOWN IN HEAVY LINE WEIGHT ON THIS DRAWING ARE PROPOSED NEW ITEMS AND WORK.
- SEE DRAWING ES-07 FOR HIGH MAST LIGHT TOWER SCHEDULE.
- PROPOSED HIGH MAST TOWERS SHALL BE INSTALLED AS INDICATED. THE TOWERS SHALL BE CONNECTED TO THE PROPOSED LIGHTING CONTROLLERS.
- AERIAL CABLE AND TEMPORARY WOOD POLES SHALL BE INSTALLED TO PROVIDE TEMPORARY CONNECTIONS FOR THE PROPOSED HIGH MAST TOWERS.
- EXISTING LIGHTING SHALL REMAIN OPERATIONAL UNTIL THE PROPOSED HIGH MAST TOWERS OR TEMPORARY LIGHTING ARE INSTALLED AND OPERATIONAL.
- TEMPORARY LIGHTING SHALL BE INSTALLED AS SHOWN, BUT NOT OPERATIONAL.

MATCH LINE STA. 1548+00
SEE SHEET RL05-39

MATCH LINE STA. 1560+00
SEE SHEET RL05-41

VE5
STA. 2548+27
SET BACK 170' RT

VF4
STA. 2551+14
SET BACK 145' RT

CKT. E&F: 3*3/0
WITH MESSENGER

VE4
STA. 2552+99
SET BACK 139' RT

7 VEF3

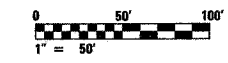
CKT. E&F: 3*3/0
WITH MESSENGER

7 VEF2

CKT. E&F: 3*3/0
WITH MESSENGER

RL05-40

K&E KAM ENGINEERING, INC.
CONSULTING ENGINEERS
707A Davis Road, Suite 205
Eglin, Illinois 60123-1369



REVISIONS	
NAME	DATE

ILLINOIS DEPARTMENT OF TRANSPORTATION
F.A.I. 94/90 (DAN RYAN EXPRESSWAY)
31st STREET TO I-57

ROADWAY LIGHTING PLANS
PROPOSED IMPROVEMENTS 2005

SCALE: 1"=50'
DATE: OCTOBER 29, 2004

DRAWN BY: BL
CHECKED BY: SM

© Projects, Inc. 329 S. W. 11th St., Ft. Lauderdale, FL 33304-4634