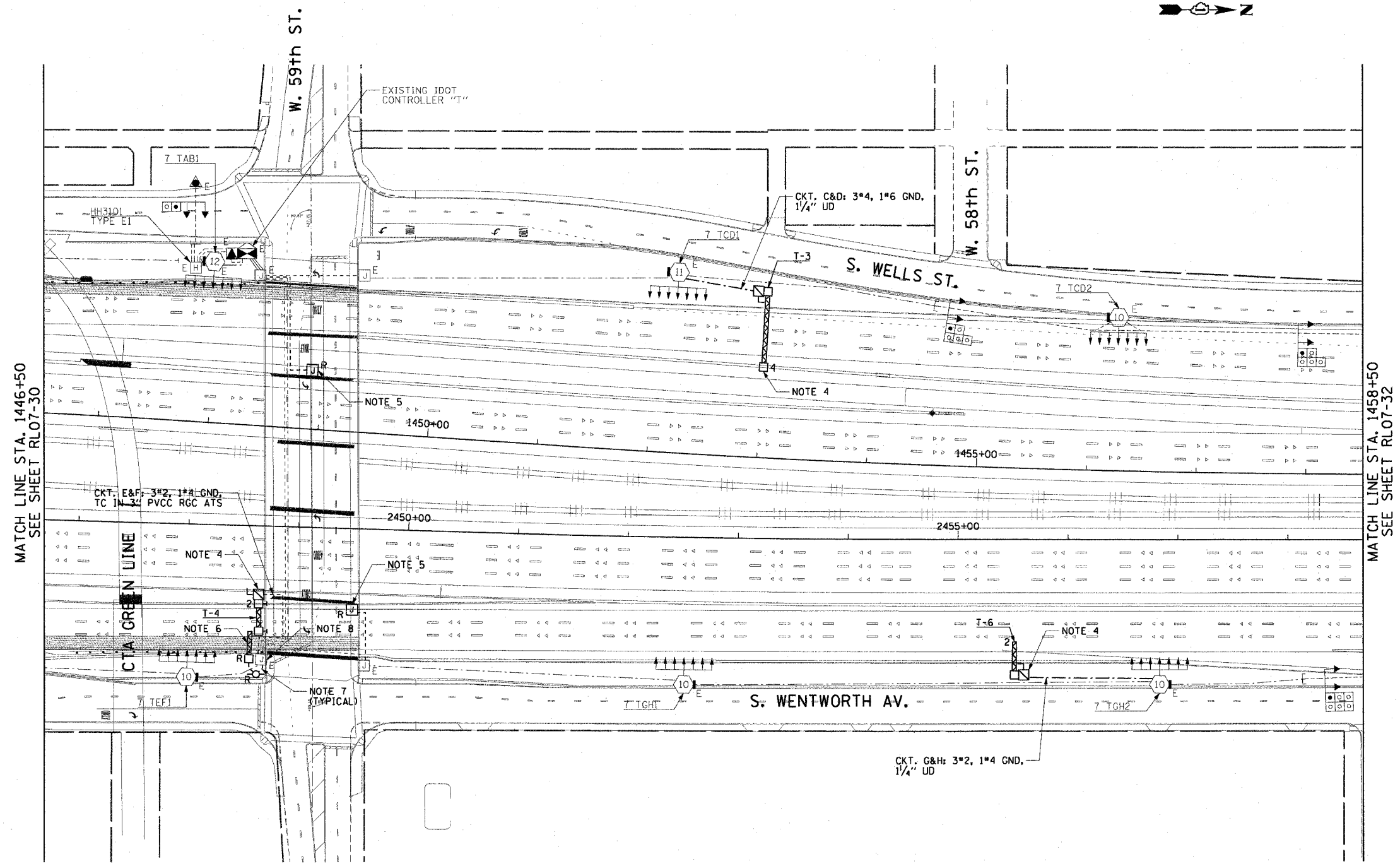
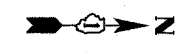


F.A.I. RTE.	SECTION	COUNTY	TOTAL SHEETS	SHEET NO.
90/94	2003-0311	COOK	976	239
STA. 1446+50.00		TO STA. 1458+50.00		
FED. ROAD DIST. NO. 1		ILLINOIS FED. AID PROJECT		

62583

**NOTES:**

1. SEE DRAWINGS ME-01 AND ME-02 FOR ELECTRICAL SYMBOLS AND ABBREVIATIONS.
2. COORDINATE ALL WORK WITH IDOT CONTRACT NOS. 62301 AND 62303.
3. UNLESS NOTED OTHERWISE, ALL ITEMS AND WORK SHOWN IN HEAVY LINE WEIGHT ON THIS DRAWING ARE PROPOSED ITEMS AND WORK.
4. SEE IDOT STANDARD DRAWINGS FOR ELECTRIC CONNECTION TO SIGN STRUCTURE DETAILS.
5. REMOVE THE EXISTING JUNCTION BOX, CONDUIT, AND MOUNTING HARDWARE FOR THE TEMPORARY POWER FEED TO THE UNDERPASS AND ROADWAY LIGHTING UNITS.
6. REMOVE EXISTING SIGN LUMINAIRES, DISCONNECT THE EXISTING SIGN LIGHTING ELECTRIC SERVICE, AND REMOVE CABLES TO THE NEAREST SPLICE. STRUCTURE AND FOUNDATION WILL BE REMOVED BY OTHERS.
7. EXISTING TEMPORARY AERIAL CABLES TO BE REMOVED WILL BE INCLUDED FOR PAYMENT WITH THE "WOODEN POLE REMOVAL" PAY ITEM.
8. SPLICE NEW LIGHTING CIRCUIT CABLES TO THE CORRESPONDING EXISTING LIGHTING CIRCUITS LOCATED WITHIN THE EXISTING JUNCTION BOX.
9. THE FINAL INSTALLATION LOCATIONS OF THE LIGHTING RACEWAYS MUST BE COORDINATED WITH THE RACEWAYS SHOWN ON THE SURVEILLANCE PLANS.



MATCH LINE STA. 1446+50  
SEE SHEET RL07-30

MATCH LINE STA. 1458+50  
SEE SHEET RL07-32



RL07-31

REVISIONS	
NAME	DATE

ILLINOIS DEPARTMENT OF TRANSPORTATION  
F.A.I. 90/94 (DAN RYAN EXPRESSWAY)  
31st STREET TO I-57  
  
ROADWAY LIGHTING PLANS  
PROPOSED IMPROVEMENTS 2007  
  
SCALE: 1"=50'  
DATE: October 29, 2004  
  
DRAWN BY: CJM  
CHECKED BY: WDS



10/15/2004 07:28:22 PM