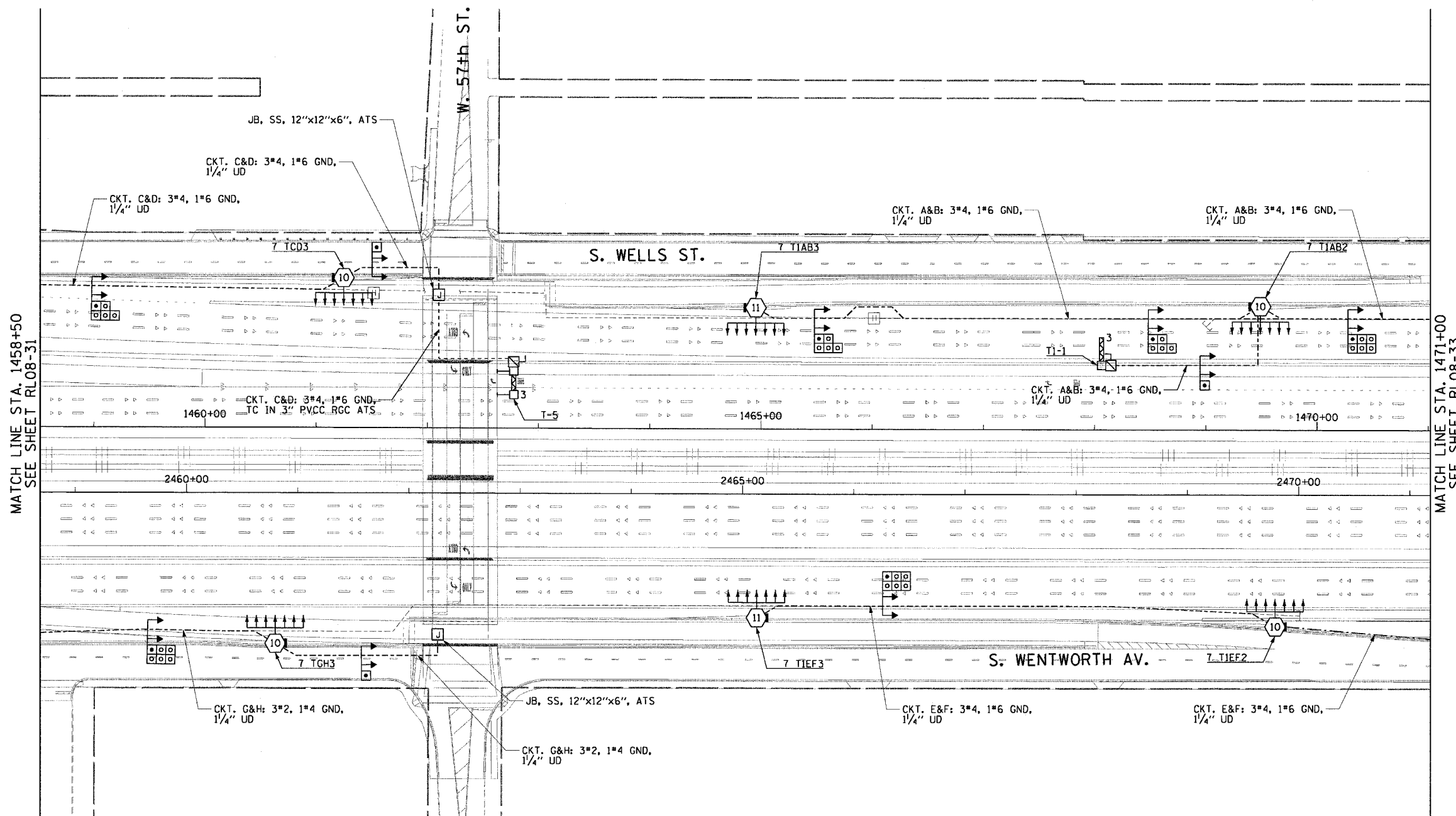
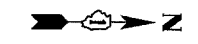


F.A.I. RTE.	SECTION	COUNTY	TOTAL SHEETS	SHEET NO.
90/94	2003-0311	COOK	976	288
STA. 1458+50.00		TO STA. 1471+00.00		
FED. ROAD DIST. NO. 1		ILLINOIS FED. AID PROJECT		

62583

NOTES:

1. SEE DRAWINGS ME-01 AND ME-02 FOR ELECTRICAL SYMBOLS AND ABBREVIATIONS.
2. SEE DRAWING ES-05 FOR HIGH MAST LIGHT TOWER SCHEDULE.
3. SEE DRAWING UL-28 FOR 57th STREET UNDERPASS LIGHTING PLANS.



MATCH LINE STA. 1458+50
SEE SHEET RL08-31

MATCH LINE STA. 1471+00
SEE SHEET RL08-33



RL08-32

REVISIONS	
NAME	DATE

ILLINOIS DEPARTMENT OF TRANSPORTATION
F.A.I. 90/94 (DAN RYAN EXPRESSWAY)
31st STREET TO I-57

**ROADWAY LIGHTING PLANS
FINAL CONDITIONS**

SCALE: 1"=50'
DATE: October 29, 2004

DRAWN BY: CJM
CHECKED BY: WDS

CTE ENGINEERS
CONSOER TOWNSEND ENVIRONMENTAL ENGINEERS, INC.
303 EAST WACKER DRIVE, SUITE 600
CHICAGO ILLINOIS 60601-5222, PHONE: (312) 938-0300

11/19/2004 06:05:00 PM