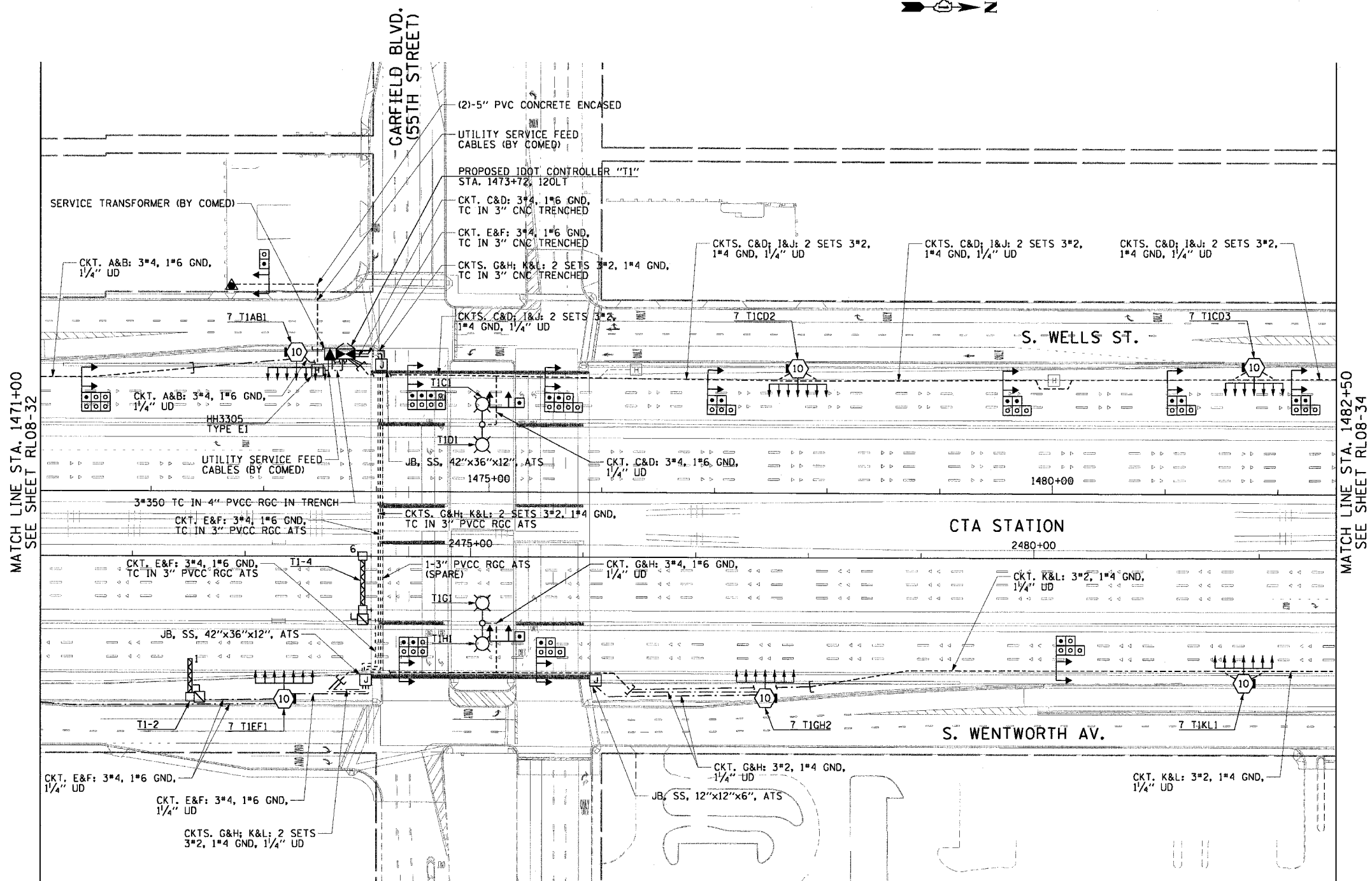


F.A.I. RTE.	SECTION	COUNTY	TOTAL SHEETS	SHEET NO.
90/94	2003-0311	COOK	976	299
STA. 1471+00.00		TO STA. 1482+50.00		
FED. ROAD DIST. NO. 1		ILLINOIS		FED. AID PROJECT

62583

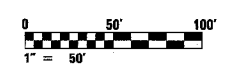
NOTES:

- SEE DRAWINGS ME-01 AND ME-02 FOR ELECTRICAL SYMBOLS AND ABBREVIATIONS.
- SEE DRAWING ES-05 FOR HIGH MAST LIGHT TOWER SCHEDULE.
- SEE DRAWINGS UL-29 AND UL-30 FOR GARFIELD BLVD. (55TH STREET) UNDERPASS LIGHTING PLANS.



MATCH LINE STA. 1471+00
SEE SHEET RL08-32

MATCH LINE STA. 1482+50
SEE SHEET RL08-34



RL08-33

REVISIONS	
NAME	DATE

ILLINOIS DEPARTMENT OF TRANSPORTATION
F.A.I. 90/94 (DAN RYAN EXPRESSWAY)
31st STREET TO I-57

**ROADWAY LIGHTING PLANS
FINAL CONDITIONS**

SCALE: 1"=50' DRAWN BY: CJM
DATE: October 29, 2004 CHECKED BY: WDS

CTE ENGINEERS
CONSER TOWNSEND ENVIRONMENTAL ENGINEERS, INC.
303 EAST WACKER DRIVE, SUITE 600
CHICAGO ILLINOIS 60601-5226, PHONE: (312) 938-0300

11/19/2004 01:05:44 PM