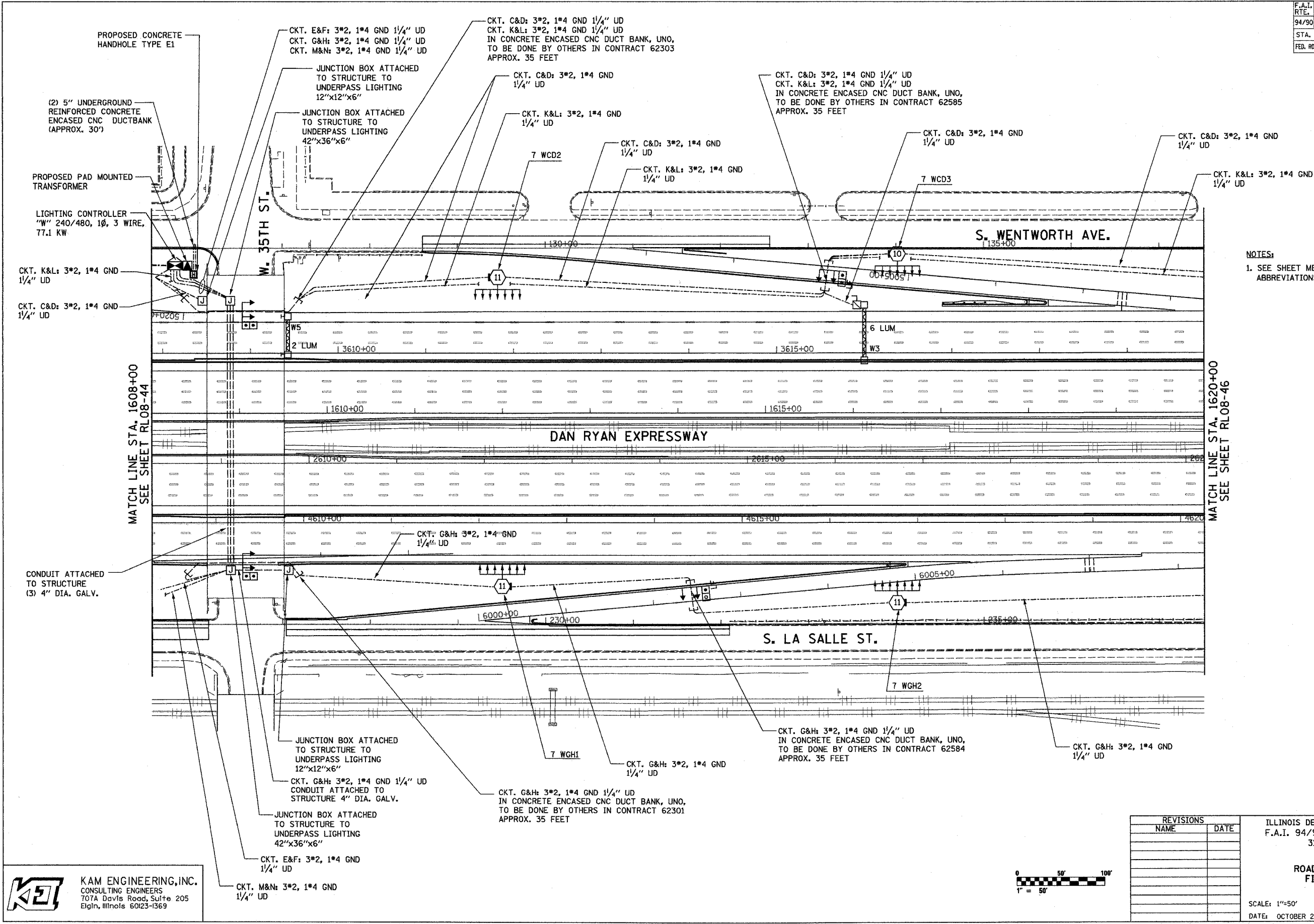


F.A.I. RTE.	SECTION	COUNTY	TOTAL SHEETS	SHEET NO.
94/90	2003-0311	COOK	976	301
STA. 1608+00	TO STA. 1620+00			
FED. ROAD DIST. NO.	ILLINOIS	FED. AID PROJECT		
62583				

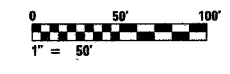


NOTES:
1. SEE SHEET ME-01 FOR ELECTRICAL SYMBOLS, ABBREVIATIONS, AND NOTES.

MATCH LINE STA. 1608+00
SEE SHEET RL08-44

MATCH LINE STA. 1620+00
SEE SHEET RL08-46

K&E KAM ENGINEERING, INC.
CONSULTING ENGINEERS
707A Davis Road, Suite 205
Evan, Illinois 60123-1369



REVISIONS	
NAME	DATE

ILLINOIS DEPARTMENT OF TRANSPORTATION
F.A.I. 94/90 (DAN RYAN EXPRESSWAY)
31st STREET TO I-57

**ROADWAY LIGHTING PLANS
FINAL IMPROVEMENTS**

SCALE: 1"=50'
DATE: OCTOBER 29, 2004

DRAWN BY: BL
CHECKED BY: SM

RL08-45

03/28/04 PW