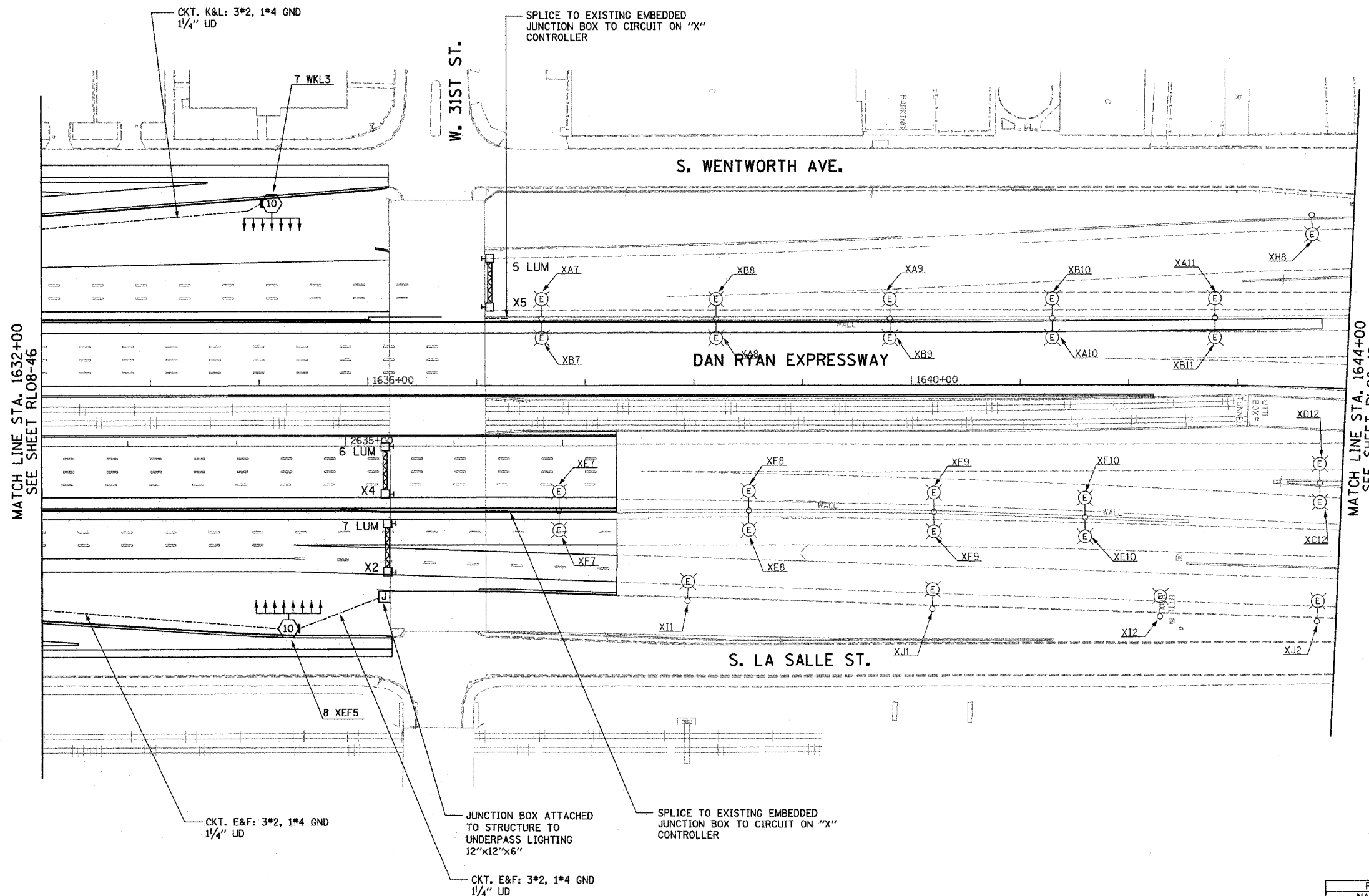


F.A.I. RTE.	SECTION	COUNTY	TOTAL SHEETS	SHEET NO.
94/90	2003-03II	COOK	976	303
STA. 1632+00		TO STA. 1644+00		
FED. ROAD DIST. NO.	ILLINOIS	FED. AID PROJECT		
62583				



NOTES:
 1. SEE SHEET ME-01 FOR ELECTRICAL SYMBOLS, ABBREVIATIONS, AND NOTES.

MATCH LINE STA. 1632+00
SEE SHEET RL08-46

MATCH LINE STA. 1644+00
SEE SHEET RL08-48

K&E KAM ENGINEERING, INC.
 CONSULTING ENGINEERS
 707A Davis Road, Suite 205
 Elgin, Illinois 60123-1369



REVISIONS	
NAME	DATE

ILLINOIS DEPARTMENT OF TRANSPORTATION
 F.A.I. 94/90 (DAN RYAN EXPRESSWAY)
 31st STREET TO I-57

**ROADWAY LIGHTING PLANS
 FINAL IMPROVEMENTS**

SCALE: 1"=50'
 DATE: OCTOBER 29, 2004

DRAWN BY: BL
 CHECKED BY: SM

RL08-47

03/25/2004 03:58:07 PM