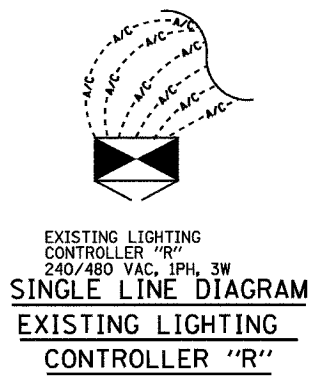


LOAD TABLE LIGHTING CONTROLLER "R"					
CIRCUIT	BLACK PHASE		CIRCUIT	RED PHASE	
	AMPS	WATTS		AMPS	WATTS
A			B		
C			D		
E			F		
G			H		
I			J		
K			L		
M			N		
O			P		
TOTAL			TOTAL		



NOTES:
1. SEE DRAWING ME-12 FOR WIRING DIAGRAM DETAILS.

LEGEND

- HIGH MAST LIGHT TOWER.
- 400 W. HPS LUMINAIRE (BLACK PHASE-SOLID SYMBOL, RED PHASE-OPEN SYMBOL)
- HIGH MAST TOWER DESIGNATION.
- LIGHTED SIGN STRUCTURE WITH 170 W. FLUORESCENT LUMINAIRE, QUANTITY OF LUMINAIRE AS REQUIRED. (BLACK PHASE-SOLID SYMBOL, RED PHASE, OPEN SYMBOL)
- 3 POLE SAFETY SWITCH
- UNDERPASS LIGHTING UNIT, 70W HPS LUMINAIRE. (BLACK PHASE- SOLID SYMBOL, RED PHASE-OPEN SYMBOL)
- EXISTING LIGHTING CONTROLLER
- GROUND FIELD
- ELECTRIC UTILITY SERVICE

REVISIONS	
NAME	DATE

ILLINOIS DEPARTMENT OF TRANSPORTATION
F.A.I. 90/94 (DAN RYAN EXPRESSWAY)
31st STREET TO I-57

**SINGLE LINE DIAGRAM
LIGHTING CONTROLLER "R"
PROPOSED IMPROVEMENTS 2005**

SCALE: NOT TO SCALE DRAWN BY: YJ
DATE: OCTOBER 29, 2004 CHECKED BY: TM

SINGH 300 W. ADAMS ST.
CHICAGO, IL 60606
SINGH & ASSOCIATES, INC. TEL: (312) 629-0240
CONSULTING ENGINEERS FAX: (312) 629-8449

JANIS udgrv/10217536-s105-05.sht 11/23/2004 1:58:45 PM