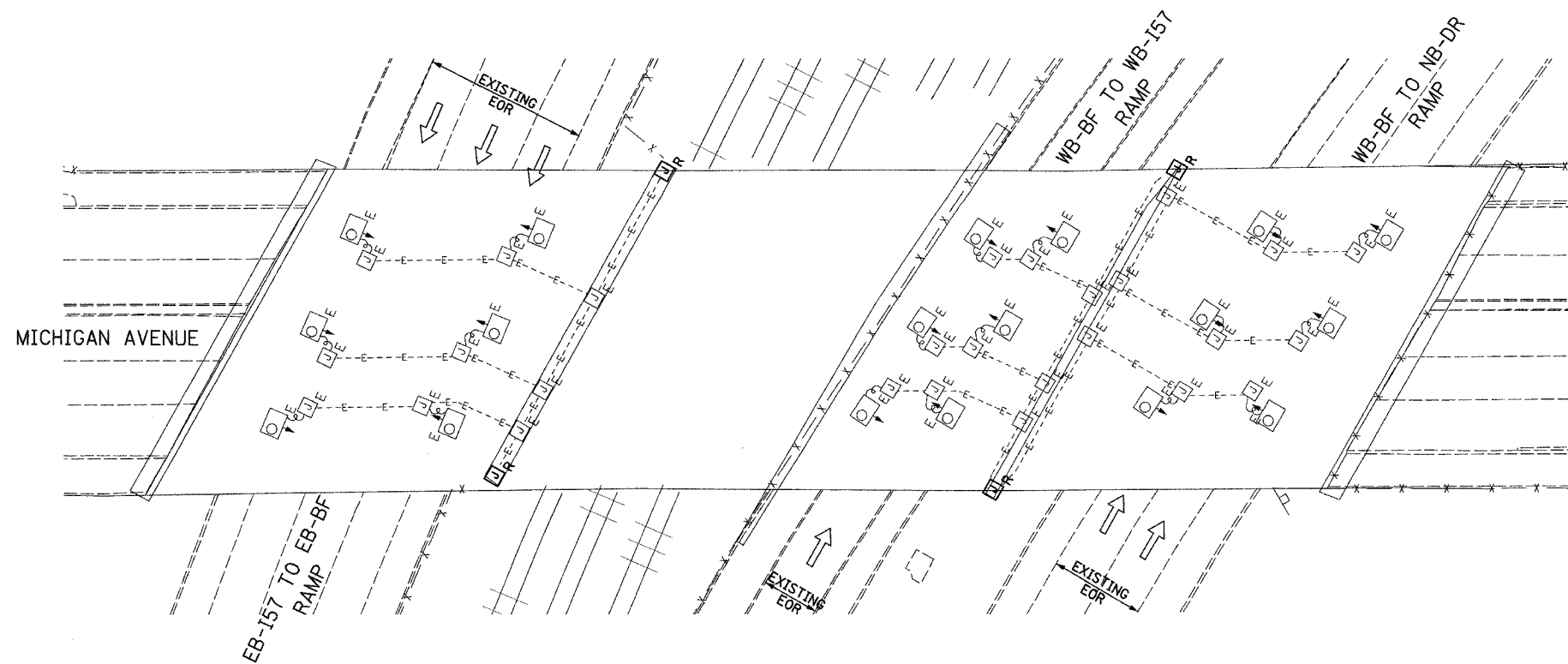
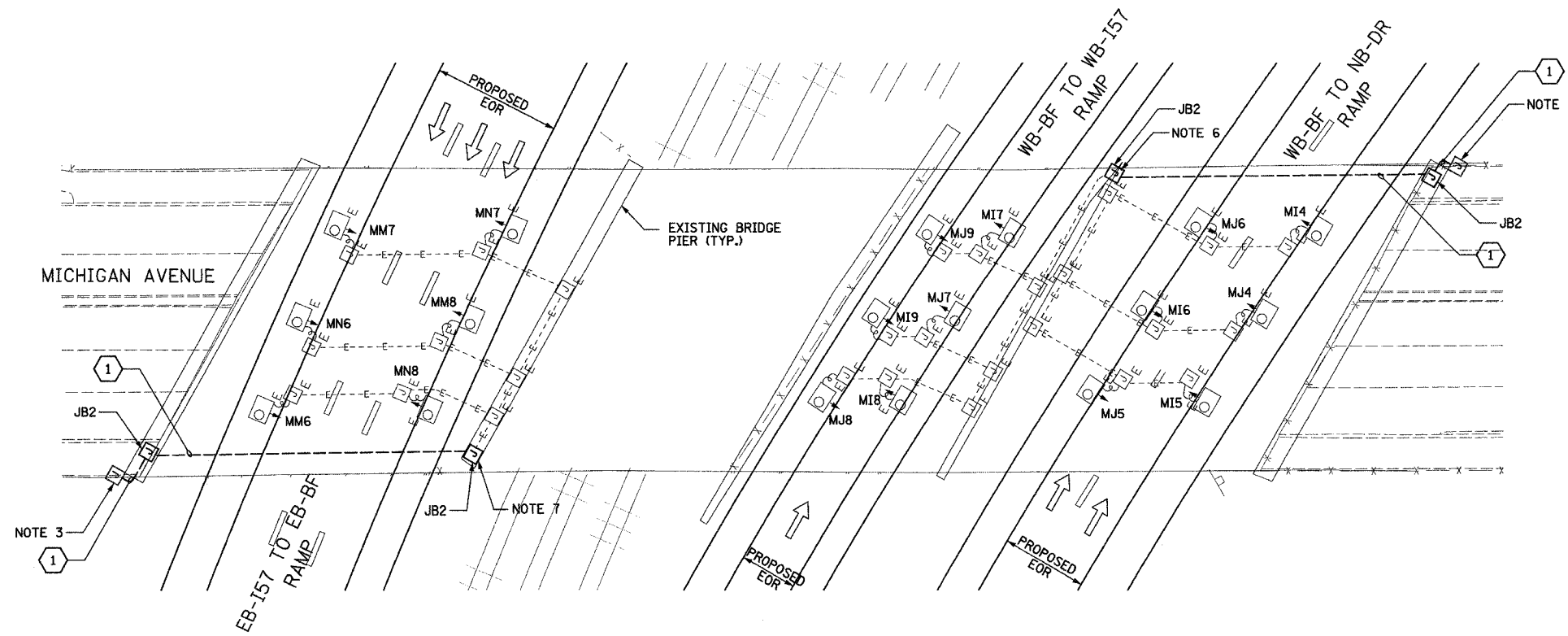


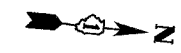
F.A.I. RTE.	SECTION	COUNTY	TOTAL SHEETS	SHEET NO.
90/94	2003-0311	COOK	976	343
STA.	TO STA.			
FED. ROAD DIST. NO.	ILLINOIS	FED. AID PROJECT	62583	



EXISTING UNDERPASS LIGHTING PLAN



PROPOSED UNDERPASS LIGHTING PLAN



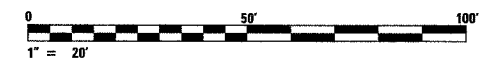
- NOTES**
- SEE DRAWINGS ME-01 AND ME-02 FOR ELECTRICAL SYMBOLS AND ABBREVIATIONS.
 - LOCATIONS OF EXISTING ELECTRICAL EQUIPMENT SHOWN ON THIS DRAWING ARE APPROXIMATIONS AND SHALL BE VERIFIED IN THE FIELD BY THE CONTRACTOR.
 - SPLICE NEW UNDERPASS LIGHTING CIRCUITS TO THE SERVICE CABLES LOCATED IN JUNCTION BOX, SEE DRAWING RL06-07 AND RL07-07 FOR CONTINUATION OF UNDERPASS LIGHTING CIRCUIT FEEDS.
 - ALL UNDERPASS LIGHTING UNITS SHOWN ON THIS DRAWING SHALL BE FED FROM IDOT LIGHTING CONTROLLER "M". SEE DRAWING SLO8-02 FOR SINGLE LINE DIAGRAM FOR LIGHTING CONTROLLER "M".
 - EXISTING UNDERPASS LIGHTING SHALL BE USED FOR PROPOSED LIGHTING. CHANGE CIRCUIT DESIGNATION TO MATCH PROPOSED.
 - SPLICE EXISTING 3*10 AND 1*10 GND. TO CKT. I&J, FROM CONTROLLER "M".
 - SPLICE EXISTING 3*10 AND 1*10 GND. TO CKT. M&N, FROM CONTROLLER "M".
 - COORDINATE ALL ELECTRICAL WORK WITH CIVIL WORK, IDOT CONTRACTS 62304, 62305, 62592, 62593, CONSTRUCTION STAGING AND TRAFFIC CONTROL PLANS.

JUNCTION BOX SCHEDULE		
NO.	SIZE	DESCRIPTION
JB2	12"x10"x6"	STAINLESS STEEL, ATTACHED TO STRUCTURE, UNDERPASS LIGHTING

CABLE /CONDUIT SCHEDULE	
1	3-1/2"Ø, 1-1/2"Ø GND IN 1" DIA PVCC RGC ATTACHED TO STRUCTURE (CKTS AS INDICATED ON THIS DRAWING)

SEQUENCE OF WORK:

- 2006: WB BF TO NB-DR
- 2006: EB I-57 TO EB-BF NORTH SIDE
- 2007: WB I-57 TO EB-BF SOUTH SIDE
- 2007: WB-BF TO WB I-57



UL-08

REVISIONS		ILLINOIS DEPARTMENT OF TRANSPORTATION F.A.I. 90/94 (DAN RYAN EXPRESSWAY) 31st STREET TO I-57
NAME	DATE	
		UNDERPASS LIGHTING PLANS MICHIGAN AVENUE
SCALE: 1"=20'		DRAWN BY: VG
DATE: OCTOBER 29, 2004		CHECKED BY: TM

SINGH 300 W. ADAMS ST.
CHICAGO, IL 60606
SINGH & ASSOCIATES, INC. TEL: (312) 629-0240
CONSULTING ENGINEERS FAX: (312) 629-8449

10/14/2004 3:49:00 PM