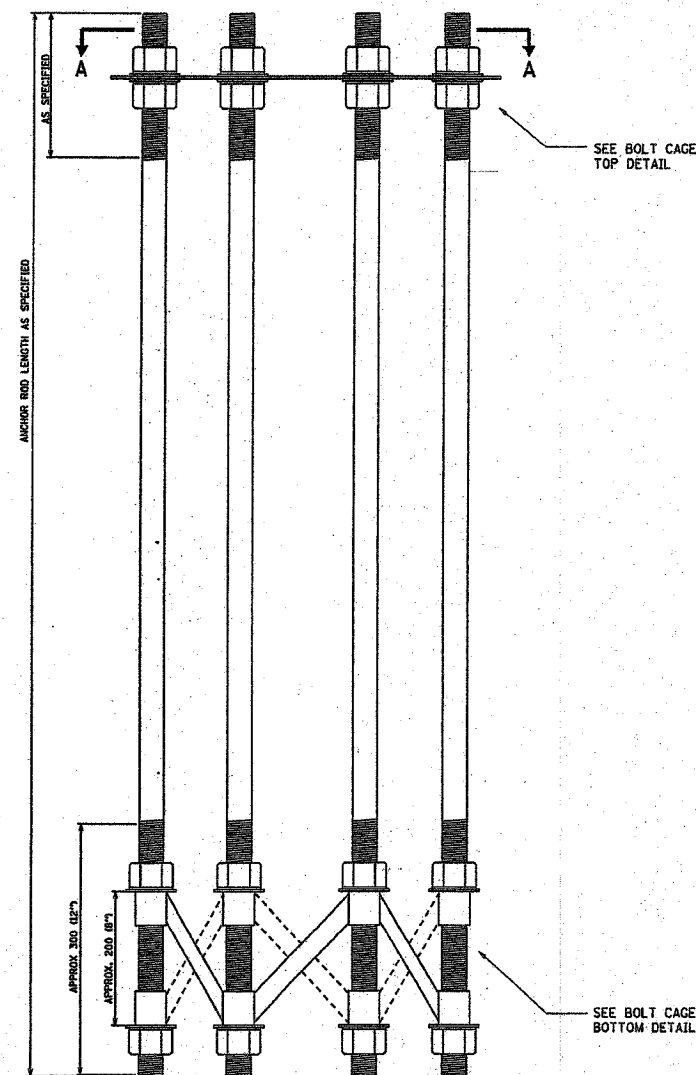
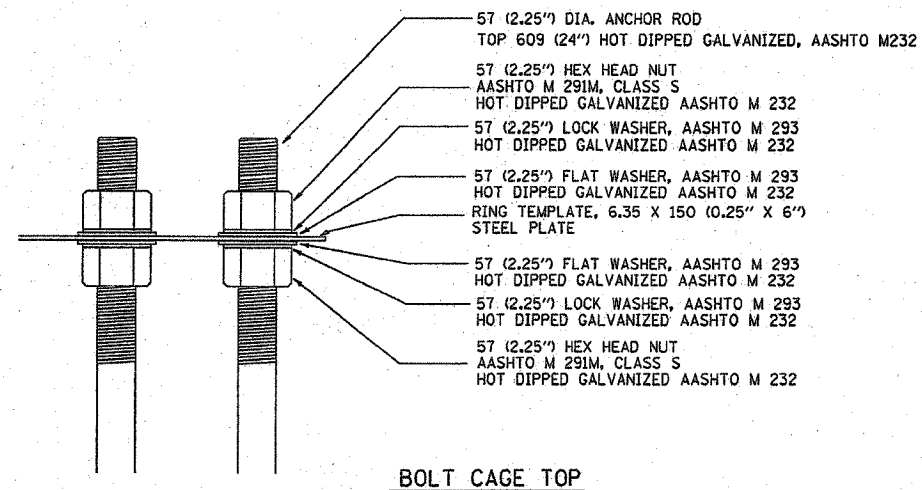


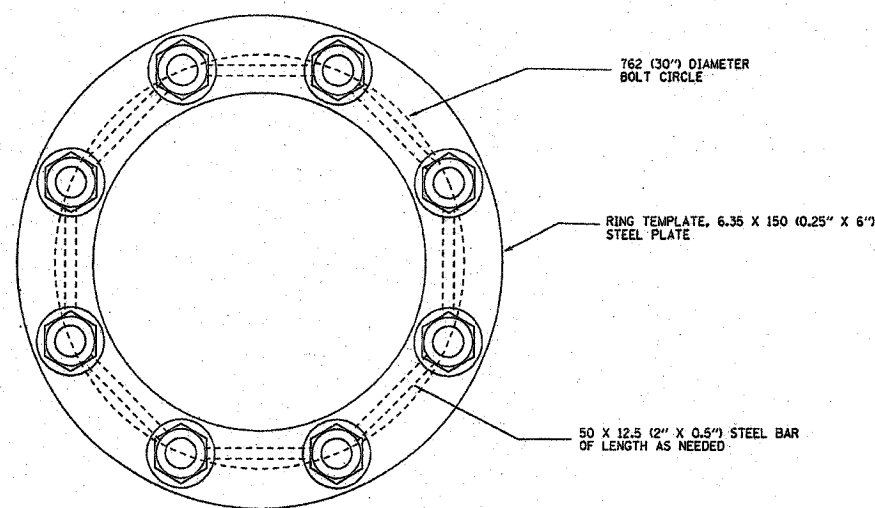
P.L. NO.	SECTION	COUNTY	TOTAL SHEETS	SHEET NO.
10/04	2003-0312	COOK	976	404
STA.	TO STA.			
FED. ROAD DIST. NO. 7	BALDWIN	FED. AID PROJECT		
62583				



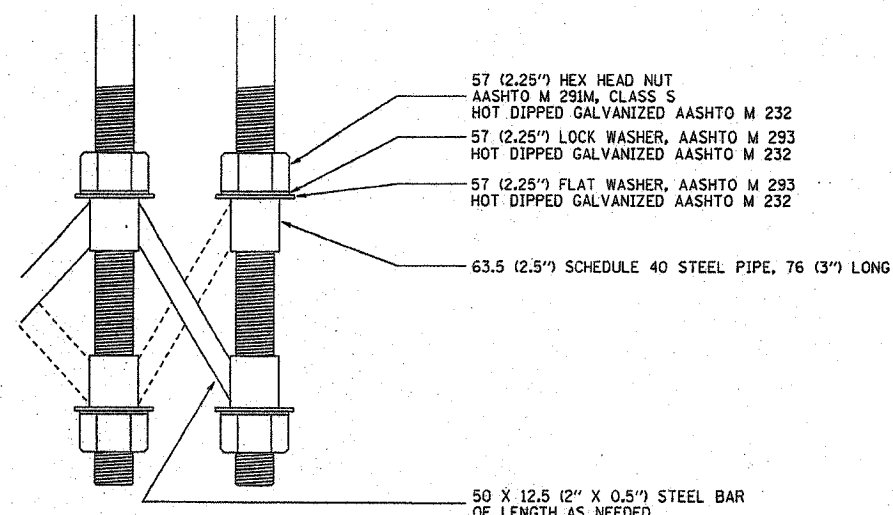
**ANCHOR BOLT CAGE**



**BOLT CAGE TOP**



**SECTION A-A**



**BOLT CAGE BOTTOM**

**NOTES**

1. ALL DIMENSIONS IN MILLIMETERS (INCHES) UNLESS OTHERWISE SHOWN
2. ANCHOR RODS SHALL BE STRAIGHT AND SHALL BE ACCORDING TO AASHTO M 314 OR ASTM F1554, GRADE 725 (GRADE 105) AND GALVANIZED ACCORDING TO ARTICLE 1006.09.
3. ANCHOR ROD INFORMATION SHALL BE SUBMITTED FOR APPROVAL AND SHALL BE FULLY COORDINATED WITH TOWER MANUFACTURERS REQUIREMENTS.

REVISIONS	
NAME	DATE

BE501

ILLINOIS DEPARTMENT OF TRANSPORTATION

**HIGH MAST LIGHT TOWER**  
27m TO 36m (90FT TO 120FT)  
**FOUNDATION DETAIL**

SHEET 2 OF 2

SCALE: NONE      DRAWN BY  
DATE 3/22/01      CHECKED BY