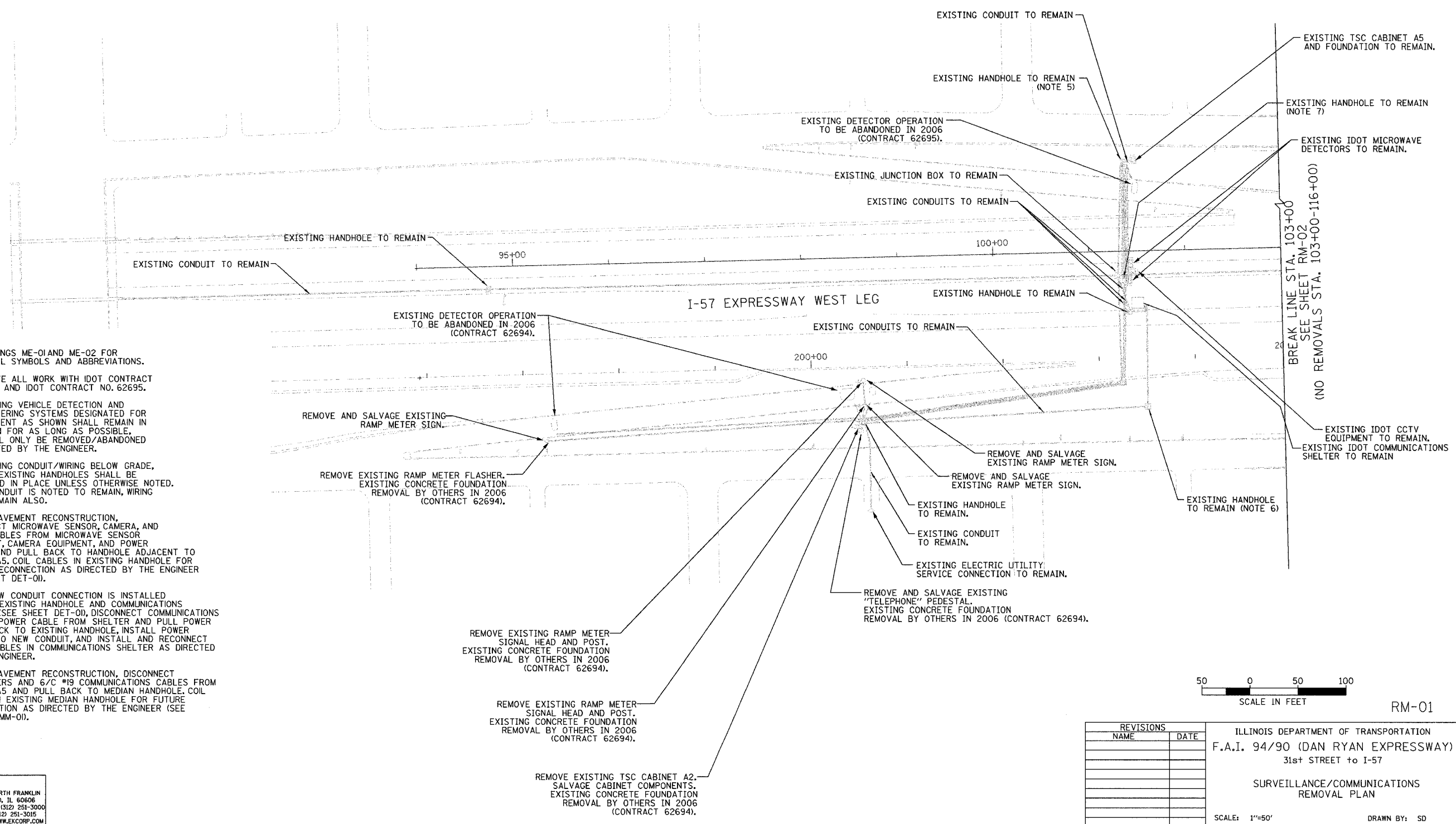
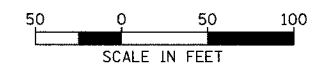


SECTION	COUNTY	TOTAL SHEETS	SHEET NO.
2003-0311	COOK	976	623
STA. 103+00.00	TO STA. 103+00.00		
FED. ROAD DIST. NO.	ILLINOIS	FED. AID PROJECT	
62583			



**NOTES:**

1. SEE DRAWINGS ME-01 AND ME-02 FOR ELECTRICAL SYMBOLS AND ABBREVIATIONS.
2. COORDINATE ALL WORK WITH IDOT CONTRACT NO. 62694 AND IDOT CONTRACT NO. 62695.
3. THE EXISTING VEHICLE DETECTION AND RAMP METERING SYSTEMS DESIGNATED FOR ABANDONMENT AS SHOWN SHALL REMAIN IN OPERATION FOR AS LONG AS POSSIBLE, AND SHALL ONLY BE REMOVED/ABANDONED AS DIRECTED BY THE ENGINEER.
4. ALL EXISTING CONDUIT/WIRING BELOW GRADE, AND ALL EXISTING HANDHOLES SHALL BE ABANDONED IN PLACE UNLESS OTHERWISE NOTED. WHERE CONDUIT IS NOTED TO REMAIN, WIRING SHALL REMAIN ALSO.
5. BEFORE PAVEMENT RECONSTRUCTION, DISCONNECT MICROWAVE SENSOR, CAMERA, AND POWER CABLES FROM MICROWAVE SENSOR EQUIPMENT, CAMERA EQUIPMENT, AND POWER SERVICE AND PULL BACK TO HANDHOLE ADJACENT TO CABINET A5. COIL CABLES IN EXISTING HANDHOLE FOR FUTURE RECONNECTION AS DIRECTED BY THE ENGINEER (SEE SHEET DET-01).
6. AFTER NEW CONDUIT CONNECTION IS INSTALLED BETWEEN EXISTING HANDHOLE AND COMMUNICATIONS SHELTER (SEE SHEET DET-01), DISCONNECT COMMUNICATIONS SHELTER POWER CABLE FROM SHELTER AND PULL POWER CABLE BACK TO EXISTING HANDHOLE, INSTALL POWER CABLE INTO NEW CONDUIT, AND INSTALL AND RECONNECT POWER CABLES IN COMMUNICATIONS SHELTER AS DIRECTED BY THE ENGINEER.
7. BEFORE PAVEMENT RECONSTRUCTION, DISCONNECT 4 SM FIBERS AND 6/C #19 COMMUNICATIONS CABLES FROM CABINET A5 AND PULL BACK TO MEDIAN HANDHOLE. COIL CABLES IN EXISTING MEDIAN HANDHOLE FOR FUTURE RECONNECTION AS DIRECTED BY THE ENGINEER (SEE SHEET COMM-01).



RM-01

**Edwards  
AND  
Kelcey**  
ONE NORTH FRANKLIN  
CHICAGO, IL 60606  
PHONE: (312) 251-3000  
FAX: (312) 251-3015  
WEB: WWW.EKCORP.COM

REVISIONS	
NAME	DATE

ILLINOIS DEPARTMENT OF TRANSPORTATION  
F.A.I. 94/90 (DAN RYAN EXPRESSWAY)  
31st STREET to I-57  
  
SURVEILLANCE/COMMUNICATIONS  
REMOVAL PLAN  
  
SCALE: 1"=50'  
DATE: October 29, 2004  
DRAWN BY: SD  
CHECKED BY: MJL

P:\030009\035\VT\SCADD\RM02001\02E.SHT 11/23/2004 11:32:09 AM