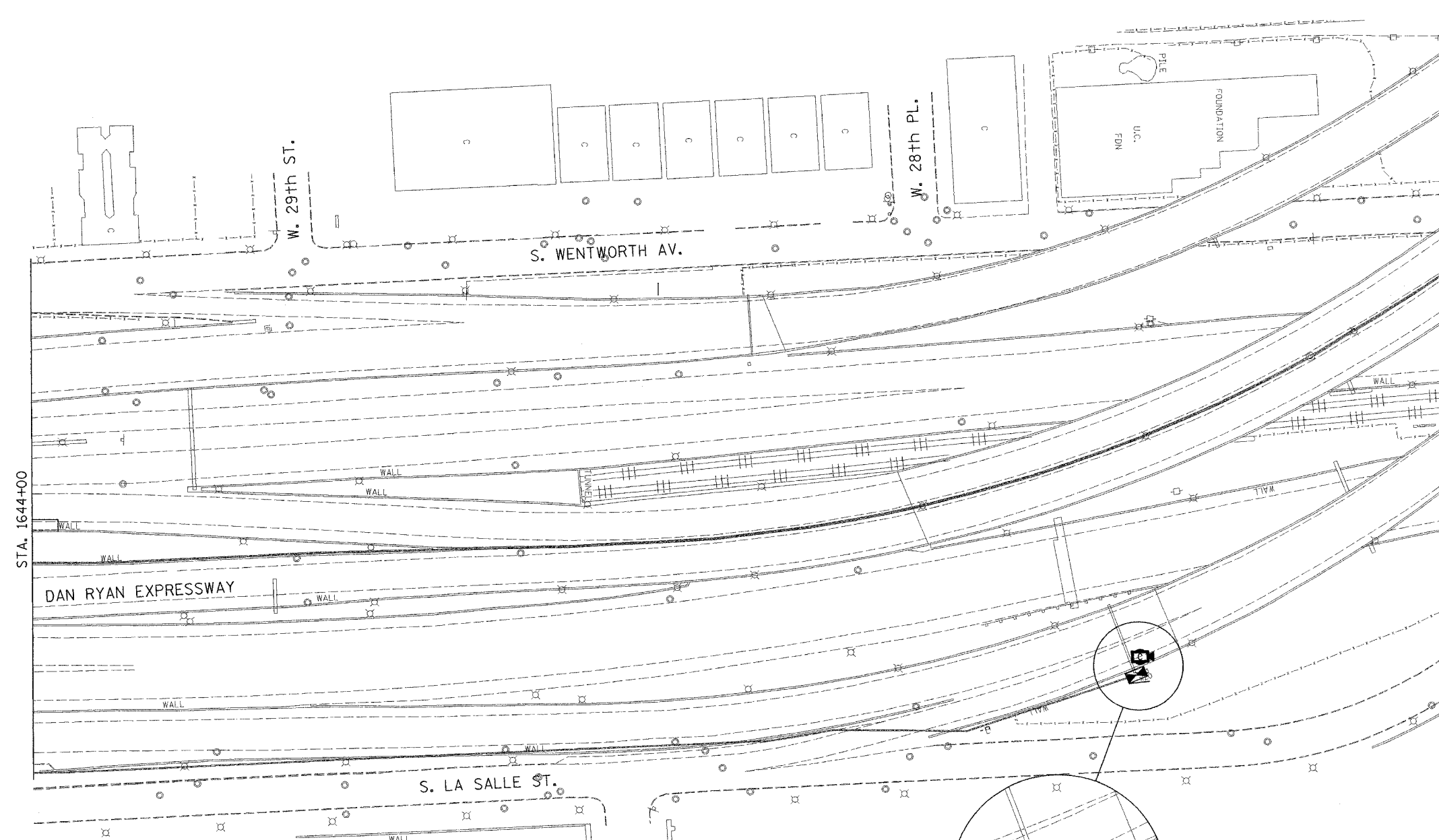


SECTION	COUNTY	TOTAL SHEETS	SHEET NO.
2003-0311	COOK	976	704
STA. 1644+00	TO STA.		
FED. ROAD DIST. NO.	ILLINOIS	FED. AID PROJECT	
		62583	



- NOTES:**
- SEE DRAWINGS ME-01 AND ME-02 FOR ELECTRICAL SYMBOLS AND ABBREVIATIONS.
 - UNLESS OTHERWISE STATED, ALL NOTED CABLE AND CONDUIT TO BE FURNISHED AND INSTALLED UNDER THIS CONTRACT.
 - THIS SHEET ONLY DEPICTS INSTALLATION OF CLOSED CIRCUIT TELEVISION ELEMENTS.
 - CONTRACTOR SHALL CONNECT CAMERA POWER FEED TO EXISTING IDOT CONTROLLER CABINET X22 AS DIRECTED IN THE SPECIAL PROVISIONS.
 - SUPPORT ARM OF THE CCTV DOME CAMERA SHALL BE INSTALLED ON THE EXPRESSWAY SIDE OF THE EXTENSION POLE. SEE DRAWING DT-16 FOR CCTV CAMERA MOUNTING DETAILS ON SIGN STRUCTURE.
 - SEE DRAWING COMM-50 FOR CCTV COMMUNICATIONS SYSTEM CONDUIT AND CABLE LAYOUT.
 - SEE DRAWING DT-16 FOR CCTV CABINET MOUNTING DETAILS ON SIGN STRUCTURE.

INSTALL AND CONNECT CCTV CAMERA SYSTEM ON EXISTING SIGN STRUCTURE (NOTES 5, 6)

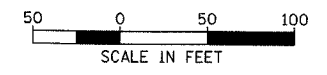
FOR POWER FEED INSTALLATION, SEE NOTE 4

INSTALL AND CONNECT CCTV CABINET EQUIPMENT IN CCTV CABINET DR-2B

INSTALL CCTV CABINET DR-2B ON EXISTING SIGN STRUCTURE (NOTE 7)

(2) 1/C #12, 1/C #12 GND, 1/4" UD IN 2" RGC ATS

(2) 1/C #12, 1/C #12 GND, 1/4" UD



CCTV-32

REVISIONS	
NAME	DATE

ILLINOIS DEPARTMENT OF TRANSPORTATION
 F.A.I. 94/90 (DAN RYAN EXPRESSWAY)
 31st STREET to I-57

CLOSED CIRCUIT TELEVISION
 SITE LAYOUT
 CAMERA DR-2B

SCALE: 1"=50'
 DATE: October 29, 2004

DRAWN BY: DHI
 CHECKED BY: MJL

Edwards AND Kelcey

ONE NORTH FRANKLIN
 CHICAGO, IL 60606
 PHONE: (312) 251-3000
 FAX: (312) 251-3015
 WEB: WWW.EDCORP.COM

P:\030019\0315\11\cctv\cctv32.dwg 10/14/2004 09:23:40 AM