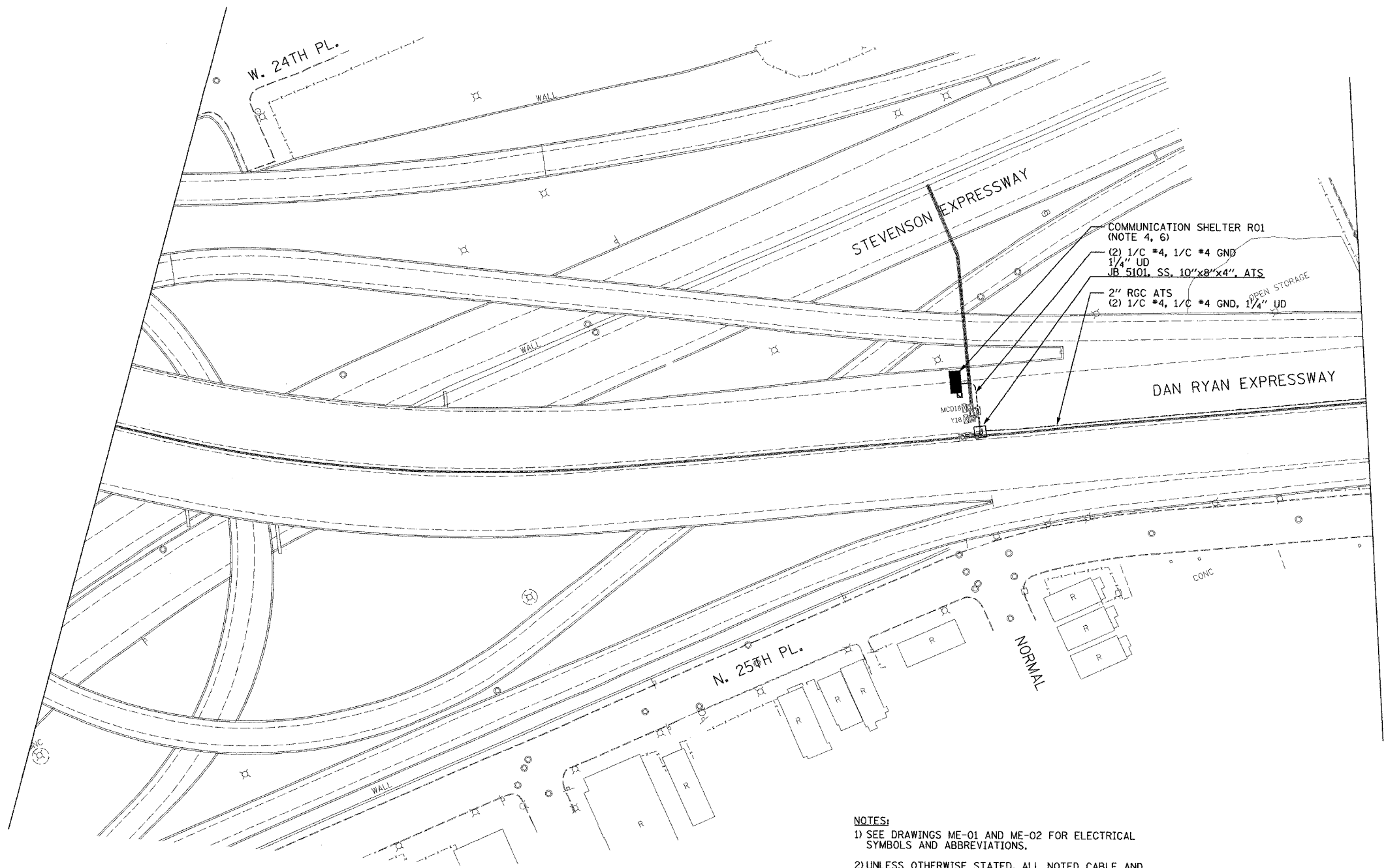
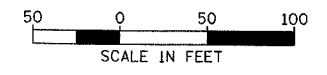


SECTION	COUNTY	TOTAL SHEETS	SHEET NO.
2003-0311	COOK	976	706
STA. 1644+00 TO STA.			
FED. ROAD DIST. NO.	ILLINOIS	FED. AID PROJECT	
		62583	



- NOTES:**
- 1) SEE DRAWINGS ME-01 AND ME-02 FOR ELECTRICAL SYMBOLS AND ABBREVIATIONS.
 - 2) UNLESS OTHERWISE STATED, ALL NOTED CABLE AND CONDUIT TO BE FURNISHED AND INSTALLED UNDER THIS CONTRACT.
 - 3) THIS SHEET ONLY DEPICTS INSTALLATION OF CLOSED CIRCUIT TELEVISION ELEMENTS.
 - 4) CONTRACTOR SHALL CONNECT POWER FEED TO A SPARE CIRCUIT BREAKER IN THE COMMUNICATION SHELTER RO1 AS DIRECTED BY THE ENGINEER.
 - 5) SEE DRAWING COMM-51 FOR CCTV COMMUNICATIONS SYSTEM CONDUIT AND CABLE LAYOUT.
 - 6) PROPOSED COMMUNICATION SHELTER (RO1) LOCATED AT GRADE UNDER DAN RYAN EXPRESSWAY. SEE SHEET COMM-81 FOR SHELTER SITE LAYOUT.



CCTV-34

**Edwards
AND Kelcey**
 ONE NORTH FRANKLIN
 CHICAGO, IL 60606
 PHONE: (312) 251-3000
 FAX: (312) 251-3015
 WEB: WWW.EKCORP.COM

REVISIONS	
NAME	DATE

ILLINOIS DEPARTMENT OF TRANSPORTATION
 F.A.I. 94/90 (DAN RYAN EXPRESSWAY)
 31st STREET TO I-57
 CLOSED CIRCUIT TELEVISION
 SITE LAYOUT
 CAMERA DR-2A (SHEET 2 OF 2)
 SCALE: 1"=50'
 DATE: October 29, 2004
 DRAWN BY: DHI
 CHECKED BY: MJL

10/14/2004 09:23:41 AM