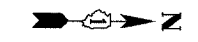
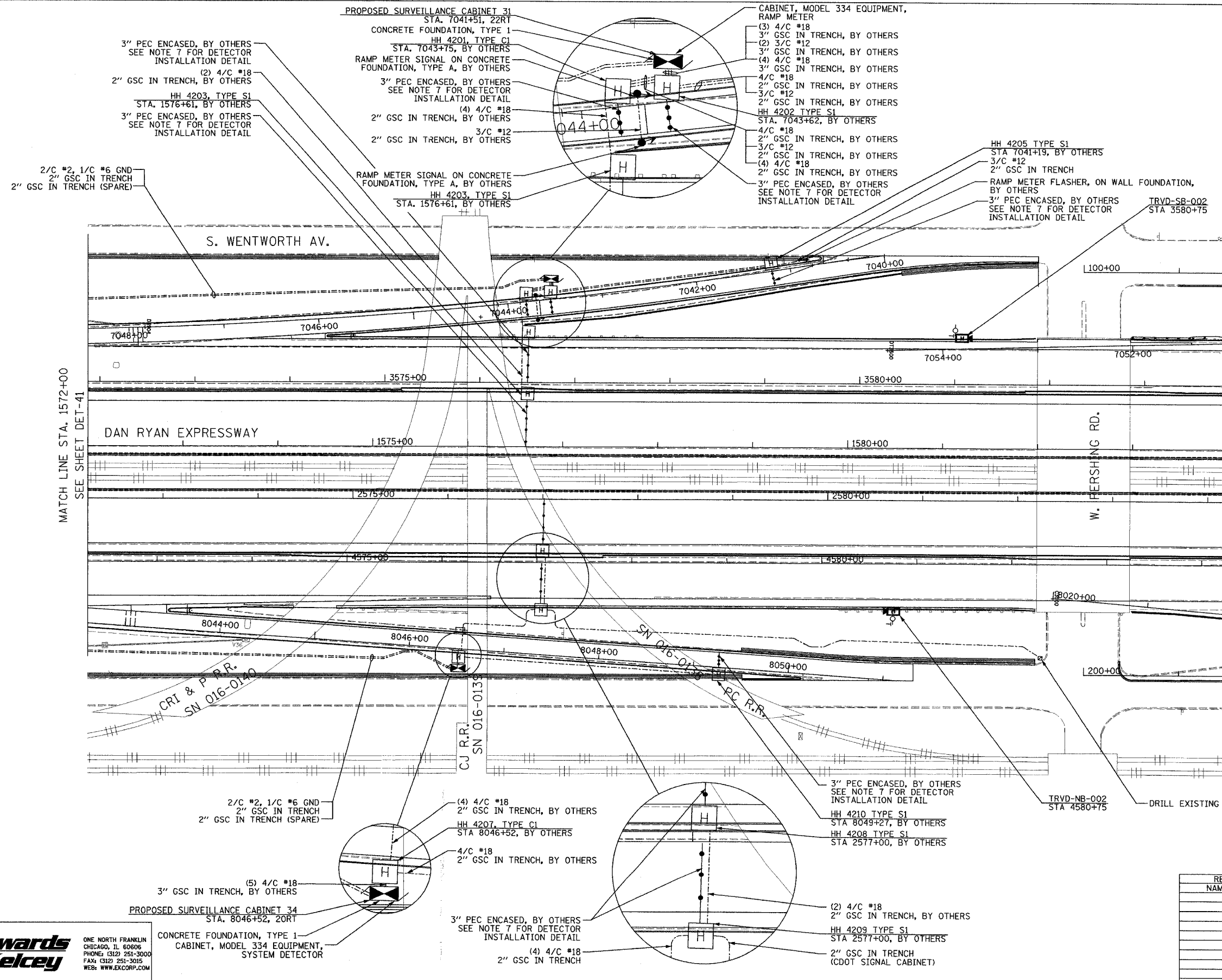


SECTION	COUNTY	TOTAL SHEETS	SHEET NO.
2003-0311	COOK	976	755
STA. 1572+00 TO STA. 1584+00			
FED. ROAD DIST. NO.	ILLINOIS	FED. AID PROJECT	
62583			

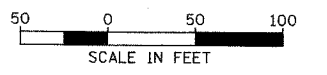


- NOTES:**
1. SEE DRAWING ME-01 AND ME-02 FOR ELECTRICAL SYSTEMS AND ABBREVIATIONS.
  2. UNLESS OTHERWISE STATED, ALL NOTED CABLE AND CONDUIT TO BE FURNISHED AND INSTALLED UNDER THIS CONTRACT.
  3. TRENCHED CONDUITS INSTALLED IN PARALLEL ARE TO BE INSTALLED IN COMMON TRENCH.
  4. THIS SHEET ONLY DEPICTS INSTALLATION OF DETECTION/RAMP METER ELEMENTS. REFER TO SHEETS FOR OTHER SUBSYSTEMS FOR ADDITIONAL ELEMENTS IN THE AREA SHOWN.
  5. CONTRACTOR TO ROD AND CLEAN EXISTING CONDUITS PRIOR TO INSTALLING AND PULLING INNERDUCTS AND CABLES IN CONDUITS.
  6. DETECTION/RAMP METER CONDUIT SHALL NOT BE INSTALLED IN ELECTRIC HANDHOLES (SEE DETAIL SHEET DT-45).
  7. FOR DETECTOR PROBE INSTALLATION DETAILS, SEE SHEETS DT-23 AND DT-28.
  8. FOR HANDHOLE DETAILS, SEE SHEET DT-44 AND DT-46.
  9. FOR WIRING DETAILS, SEE SHEETS DET-48 THROUGH DET-53.
  10. FOR TEMPORARY DETECTION DETAILS SEE SHEETS DT-53 TO DT-55.



MATCH LINE STA. 1572+00  
SEE SHEET DET-41

MATCH LINE STA. 1584+00  
SEE SHEET DET-43



DET-42

REVISIONS	
NAME	DATE

ILLINOIS DEPARTMENT OF TRANSPORTATION  
 F.A.I. 94/90 (DAN RYAN EXPRESSWAY)  
 31st STREET TO I-57  
 SURVEILLANCE SYSTEM STATION  
 RAMP METERING AND DETECTOR SYSTEM  
 ROOT ST. SITE LAYOUT  
 DET-45, DET-46, RM-19

SCALE: 1"=50'  
 DATE: October 29, 2004  
 DRAWN BY: CJH  
 CHECKED BY: MJL



10/21/2004 09:38:11 PM