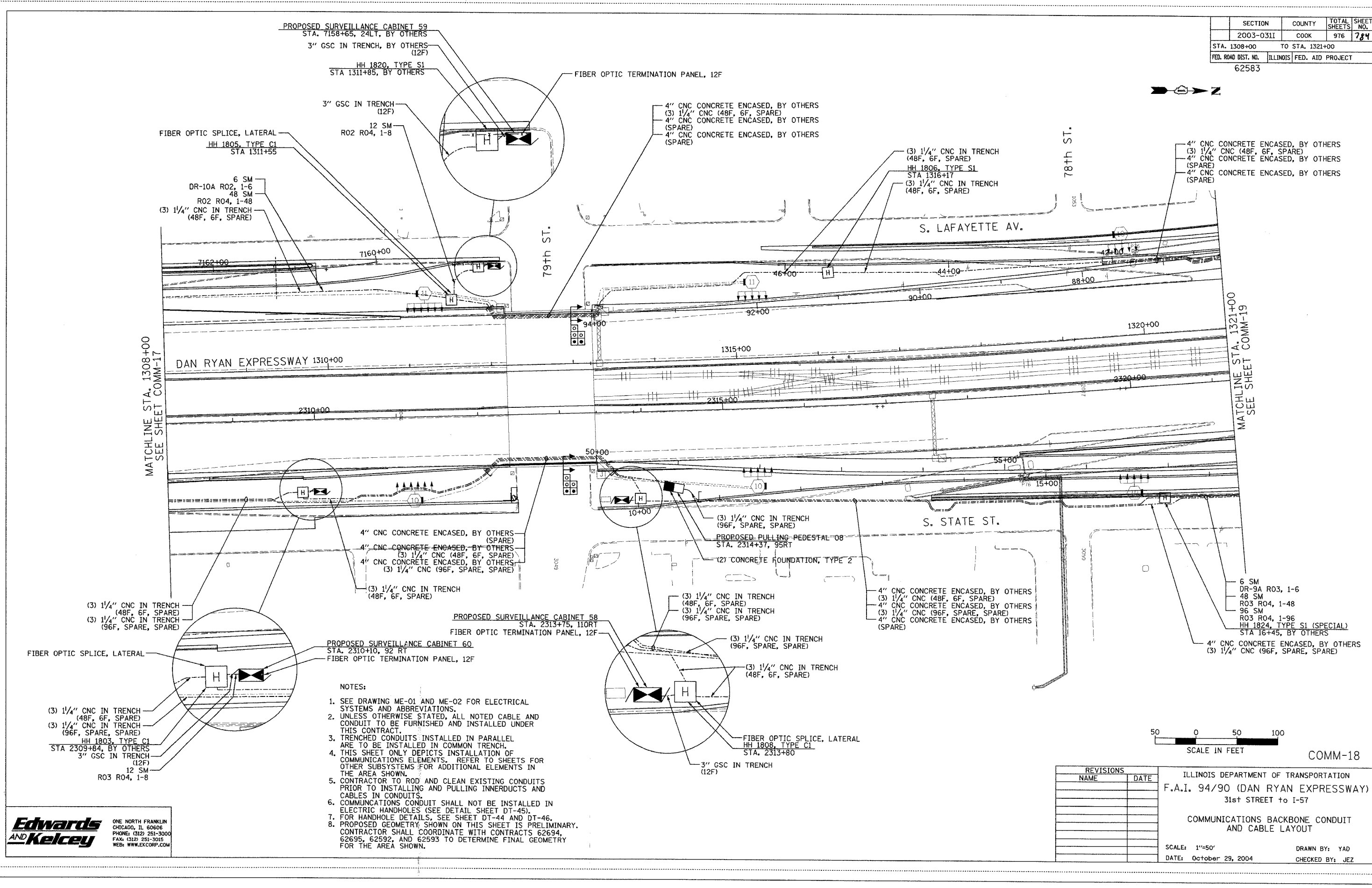


SECTION	COUNTY	TOTAL SHEETS	SHEET NO.
2003-0311	COOK	976	784
STA. 1308+00 TO STA. 1321+00			
FED. ROAD DIST. NO.	ILLINOIS FED. AID PROJECT		
62583			



PROPOSED SURVEILLANCE CABINET 59  
STA. 7158+65, 24LT, BY OTHERS  
3" GSC IN TRENCH, BY OTHERS (12F)  
HH 1820, TYPE S1  
STA 1311+85, BY OTHERS

FIBER OPTIC TERMINATION PANEL, 12F

3" GSC IN TRENCH (12F)  
12 SM R02 R04, 1-8

4" CNC CONCRETE ENCASED, BY OTHERS (3) 1/4" CNC (48F, 6F, SPARE)  
4" CNC CONCRETE ENCASED, BY OTHERS (SPARE)  
4" CNC CONCRETE ENCASED, BY OTHERS (SPARE)

(3) 1/4" CNC IN TRENCH (48F, 6F, SPARE)  
HH 1806, TYPE S1  
STA 1316+17  
(3) 1/4" CNC IN TRENCH (48F, 6F, SPARE)

4" CNC CONCRETE ENCASED, BY OTHERS (3) 1/4" CNC (48F, 6F, SPARE)  
4" CNC CONCRETE ENCASED, BY OTHERS (SPARE)  
4" CNC CONCRETE ENCASED, BY OTHERS (SPARE)

6 SM DR-10A R02, 1-6  
48 SM R02 R04, 1-48  
(3) 1/4" CNC IN TRENCH (48F, 6F, SPARE)

FIBER OPTIC SPLICE, LATERAL  
HH 1805, TYPE C1  
STA 1311+55

79th ST.

78th ST.

S. LAFAYETTE AV.

DAN RYAN EXPRESSWAY 1310+00

78th ST.

79th ST.

S. STATE ST.

PROPOSED SURVEILLANCE CABINET 58  
STA. 2315+75, 110RT  
FIBER OPTIC TERMINATION PANEL, 12F

4" CNC CONCRETE ENCASED, BY OTHERS (SPARE)  
4" CNC CONCRETE ENCASED, BY OTHERS (SPARE)  
(3) 1/4" CNC (48F, 6F, SPARE)  
4" CNC CONCRETE ENCASED, BY OTHERS (SPARE)  
(3) 1/4" CNC (96F, SPARE, SPARE)

(3) 1/4" CNC IN TRENCH (48F, 6F, SPARE)

PROPOSED SURVEILLANCE CABINET 60  
STA. 2310+10, 92 RT  
FIBER OPTIC TERMINATION PANEL, 12F

FIBER OPTIC SPLICE, LATERAL

(3) 1/4" CNC IN TRENCH (48F, 6F, SPARE)  
(3) 1/4" CNC IN TRENCH (96F, SPARE, SPARE)  
HH 1803, TYPE C1  
STA 2309+84, BY OTHERS  
3" GSC IN TRENCH (12F)  
12 SM R03 R04, 1-8

PROPOSED PULLING PEDESTAL '08  
STA. 2314+37, 95RT  
(2) CONCRETE FOUNDATION, TYPE 2

(3) 1/4" CNC IN TRENCH (96F, SPARE, SPARE)  
(3) 1/4" CNC IN TRENCH (48F, 6F, SPARE)  
(3) 1/4" CNC IN TRENCH (96F, SPARE, SPARE)

4" CNC CONCRETE ENCASED, BY OTHERS (3) 1/4" CNC (48F, 6F, SPARE)  
4" CNC CONCRETE ENCASED, BY OTHERS (3) 1/4" CNC (96F, SPARE, SPARE)  
4" CNC CONCRETE ENCASED, BY OTHERS (SPARE)

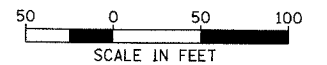
6 SM DR-9A R03, 1-6  
48 SM R03 R04, 1-48  
96 SM R03 R04, 1-96  
HH 1824, TYPE S1 (SPECIAL)  
STA 16+45, BY OTHERS  
4" CNC CONCRETE ENCASED, BY OTHERS (3) 1/4" CNC (96F, SPARE, SPARE)

(3) 1/4" CNC IN TRENCH (48F, 6F, SPARE)  
(3) 1/4" CNC IN TRENCH (96F, SPARE, SPARE)

FIBER OPTIC SPLICE, LATERAL  
HH 1808, TYPE C1  
STA. 2313+80

3" GSC IN TRENCH (12F)

- NOTES:
- SEE DRAWING ME-01 AND ME-02 FOR ELECTRICAL SYSTEMS AND ABBREVIATIONS.
  - UNLESS OTHERWISE STATED, ALL NOTED CABLE AND CONDUIT TO BE FURNISHED AND INSTALLED UNDER THIS CONTRACT.
  - TRENCHED CONDUITS INSTALLED IN PARALLEL ARE TO BE INSTALLED IN COMMON TRENCH.
  - THIS SHEET ONLY DEPICTS INSTALLATION OF COMMUNICATIONS ELEMENTS. REFER TO SHEETS FOR OTHER SUBSYSTEMS FOR ADDITIONAL ELEMENTS IN THE AREA SHOWN.
  - CONTRACTOR TO ROD AND CLEAN EXISTING CONDUITS PRIOR TO INSTALLING AND PULLING INNERDUCTS AND CABLES IN CONDUITS.
  - COMMUNICATIONS CONDUIT SHALL NOT BE INSTALLED IN ELECTRIC HANDHOLES (SEE DETAIL SHEET DT-45).
  - FOR HANDHOLE DETAILS, SEE SHEET DT-44 AND DT-46.
  - PROPOSED GEOMETRY, SHOWN ON THIS SHEET IS PRELIMINARY. CONTRACTOR SHALL COORDINATE WITH CONTRACTS 62694, 62695, 62592, AND 62593 TO DETERMINE FINAL GEOMETRY FOR THE AREA SHOWN.



REVISIONS	
NAME	DATE

ILLINOIS DEPARTMENT OF TRANSPORTATION  
F.A.I. 94/90 (DAN RYAN EXPRESSWAY)  
31st STREET TO I-57

COMMUNICATIONS BACKBONE CONDUIT  
AND CABLE LAYOUT

SCALE: 1"=50'  
DATE: October 29, 2004

DRAWN BY: YAD  
CHECKED BY: JEZ

**Edwards and Kelcey**  
ONE NORTH FRANKLIN  
CHICAGO, IL 60606  
PHONE: (312) 251-3000  
FAX: (312) 251-3015  
WEB: WWW.EKCORP.COM

P:\030019\035\1\3\CADD\COMM\02018E.SHT 10/15/2004 02:41:29 PM