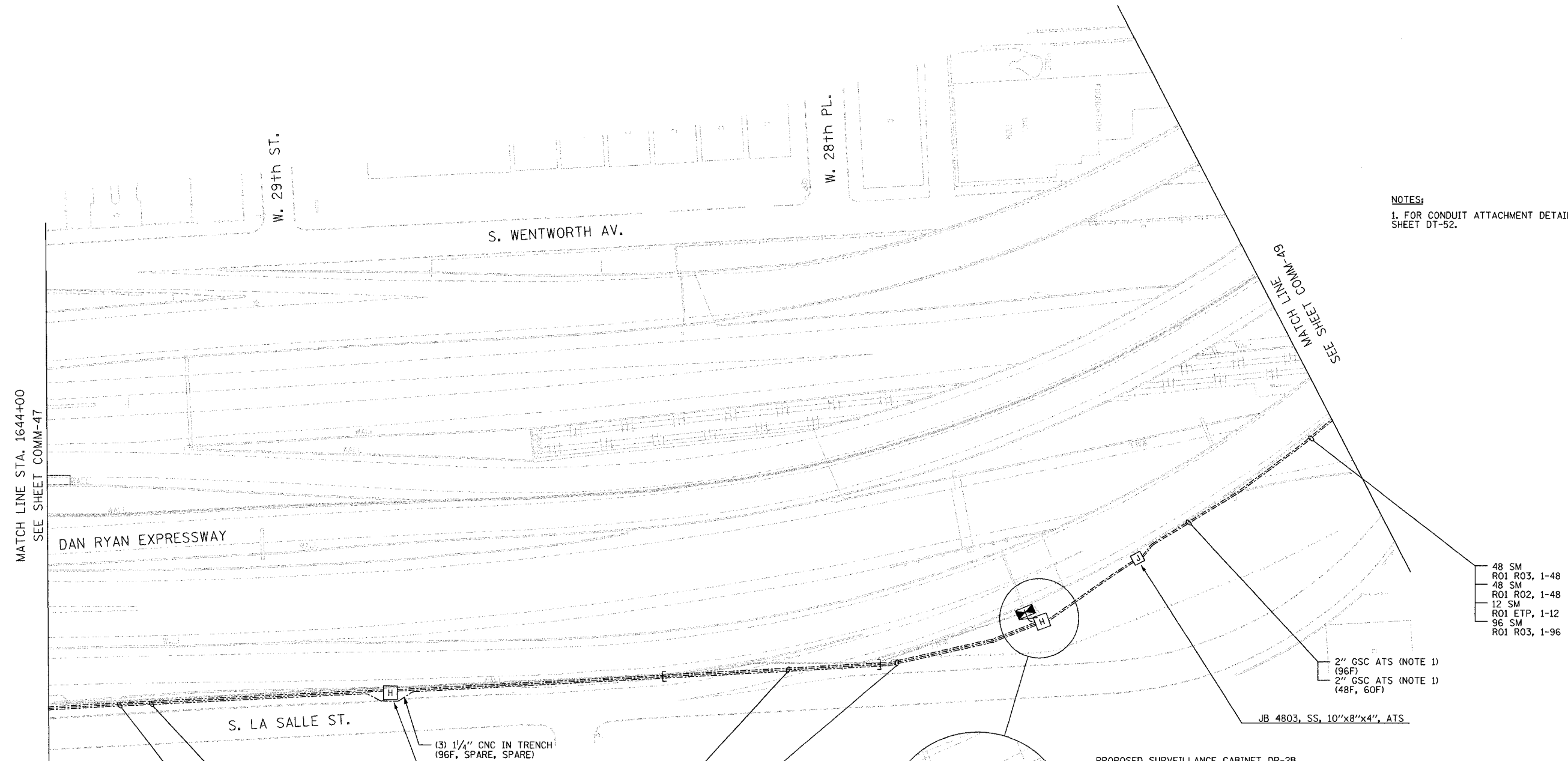


SECTION	COUNTY	TOTAL SHEETS	SHEET NO.
2003-0311	COOK	976	814
STA. 1644+00 TO STA.			
FED. ROAD DIST. NO.	ILLINOIS	FED. AID PROJECT	
		62583	



NOTES:  
1. FOR CONDUIT ATTACHMENT DETAILS, SEE SHEET DT-52.



MATCH LINE STA. 1644+00  
SEE SHEET COMM-47

SEE MATCH LINE  
COMM-49

- 48 SM
- R01 R03, 1-48
- 48 SM
- R01 R02, 1-48
- 12 SM
- R01 ETP, 1-12
- 96 SM
- R01 R03, 1-96

2" GSC ATS (NOTE 1)  
(96F)  
2" GSC ATS (NOTE 1)  
(48F, 60F)

JB 4803, SS, 10"x8"x4", ATS

S. LA SALLE ST.

- (3) 1/4" CNC IN TRENCH (48F, 6F, SPARE)
- (3) 1/4" CNC IN TRENCH (60F, SPARE, SPARE)
- (3) 1/4" CNC IN TRENCH (96F, SPARE, SPARE)
- 6 SM
- CCTV-14 R03, 1-6
- 48 SM
- R01 R03, 1-48
- 48 SM
- R01 R02, 1-48
- 12 SM
- R01 ETP, 1-12
- 96 SM
- R01 R03, 1-96

(3) 1/4" CNC IN TRENCH (96F, SPARE, SPARE)  
HH 4801 TYPE S1

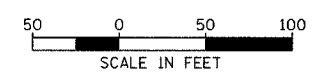
- 4" CNC PUSHED (96F, SPARE, SPARE)
- 4" CNC PUSHED (60F, SPARE, SPARE)
- 4" CNC PUSHED (48F, 6F, SPARE)
- (3) 1/4" CNC IN TRENCH (96F, SPARE, SPARE)
- (3) 1/4" CNC IN TRENCH (60F, SPARE, SPARE)
- (3) 1/4" CNC IN TRENCH (48F, 6F, SPARE)

- 1/4" CNC IN TRENCH (6F)
- (3) 1/4" CNC IN TRENCH (60F, SPARE, SPARE)
- (3) 1/4" CNC IN TRENCH (48F, 6F, SPARE)
- (3) 1/4" CNC IN TRENCH (96F, SPARE, SPARE)

PROPOSED SURVEILLANCE CABINET DR-2B

2" GSC IN TRENCH (48F, 60F)  
2" GSC IN TRENCH (96F)

HH 4802 TYPE C1



SCALE IN FEET  
COMM-48

**Edwards AND Kelcey**  
ONE NORTH FRANKLIN  
CHICAGO, IL 60606  
PHONE: (312) 251-3000  
FAX: (312) 251-3015  
WEB: WWW.EKCORP.COM

REVISIONS	
NAME	DATE

ILLINOIS DEPARTMENT OF TRANSPORTATION  
F.A.I. 94/90 (DAN RYAN EXPRESSWAY)  
31st STREET TO I-57  
  
COMMUNICATIONS BACKBONE CONDUIT AND CABLE LAYOUT  
  
SCALE: 1"=50'  
DATE: October 29, 2004  
DRAWN BY: DHI  
CHECKED BY: MJL

F:\030009\0305\VS\CADD\COMM\020482.SHT 11/23/2004 04:23:39 PM