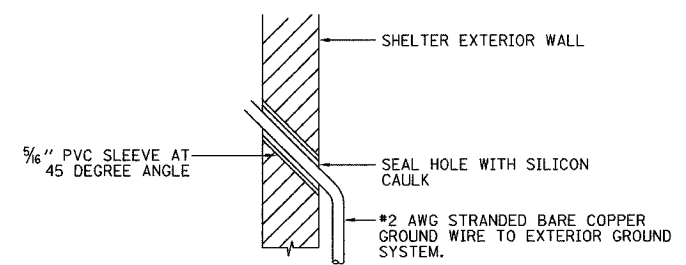
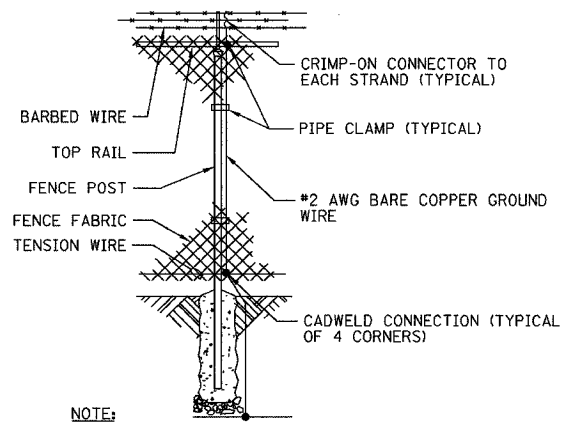


F.A.I. RTE.	SECTION	COUNTY	TOTAL SHEETS	SHEET NO.
94/90	2003-0311	COOK	976	859
STA.	TO STA.			
FED. ROAD DIST. NO.	ILLINOIS FED. AID PROJECT			
62583				



**WALL GROUND PENETRATION DETAIL**  
NOT TO SCALE

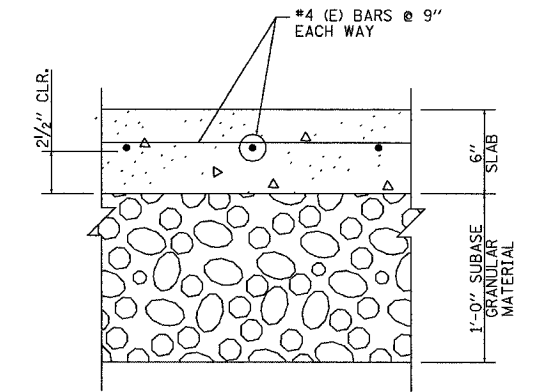


**FENCE GROUNDING**  
NOT TO SCALE

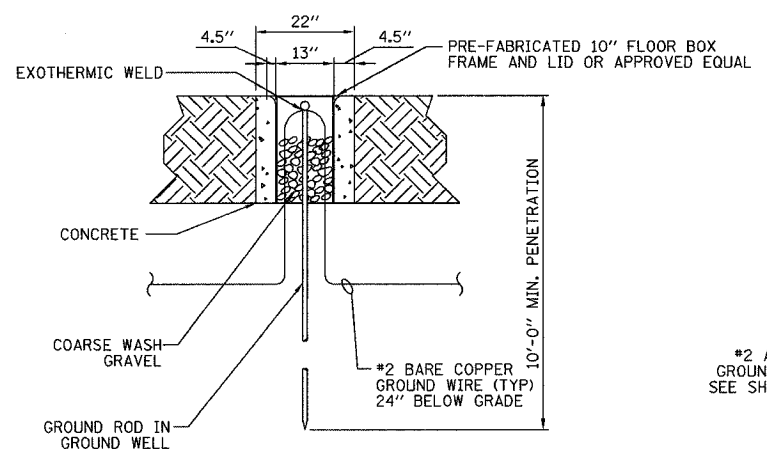
- NOTES:**
1. PROVIDE A COMPLETE AND CONTINUOUS GROUND SYSTEM IN ACCORDANCE WITH THE DRAWINGS AND SPECIFICATIONS.
  2. BOND TO THE INTERIOR GROUND BUS ANY METAL OBJECTS PASSING OR CROSSING WITHIN ONE FOOT OF THE RING. ADDITIONAL GROUNDING IS SITE SPECIFIC AND SHALL BE SHOWN ON INTERIOR ELECTRICAL LAYOUT.
  3. DETAIL SHOWS INSTALLATION IN UNPAVED AREA. WHEN INSTALLING IN A PAVED AREA INCORPORATE GROUND WELL IN THE POUR. (GROUND WELLS SHALL NOT BE INSTALLED IN VEHICULAR TRAFFIC AREAS)
  4. GROUND WELLS ARE REQUIRED AT EVERY GROUND ROD.
  5. WEIGHTS OF ALL FENCE PIPE MEMBERS SHALL MEET THE MINIMUM REQUIREMENTS OF A.S.A. SCHEDULE 40.
  6. BARBED WIRE EXTENSION ARMS SHALL BE ANGLED FROM THE VERTICAL.
  7. GATE JUMPER SHALL BE #4/0 AWG WELDING CABLE OR FLEXIBLE COPPER BRAIDE WITH SLEEVES ON EACH END FOR EXOTHERMIC WELDING.
  8. GATE JUMPER SHALL BE INSTALLED SO THAT IT WILL NOT BE SUBJECTED TO DAMAGING STRAIN WHEN GATE IS FULLY OPEN IN EITHER DIRECTION.

GROUND WIRE SIZES			
DESCRIPTION	WIRE	INSULATION/ COATING	SOLID OR STRANDED
EXTERIOR RING AND BELOW GROUND CONNECTIONS	#2	BARE	STRANDED
AC SERVICE GRND.	#2	INSULATED	STRANDED
ALL BONDING JUMPERS	#2	INSULATED	STRANDED

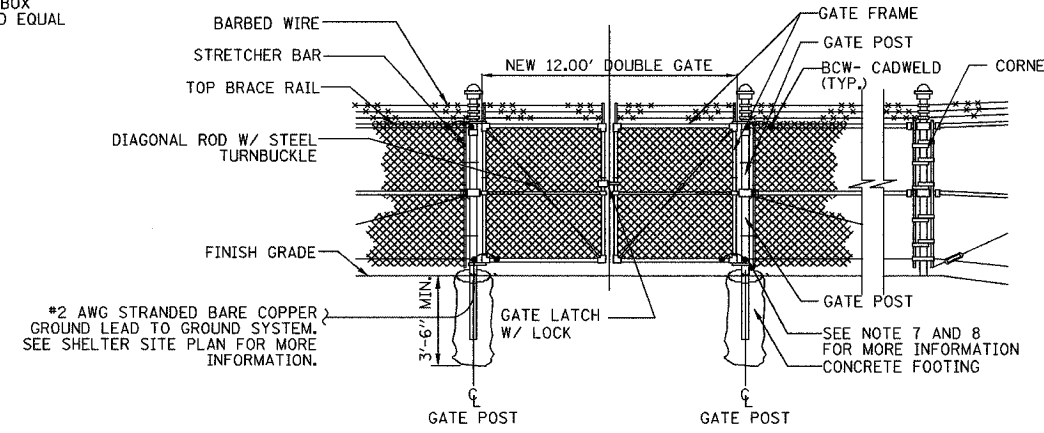
INSULATION WHERE SPECIFIED SHALL BE THWN, COLOR CODED GREEN



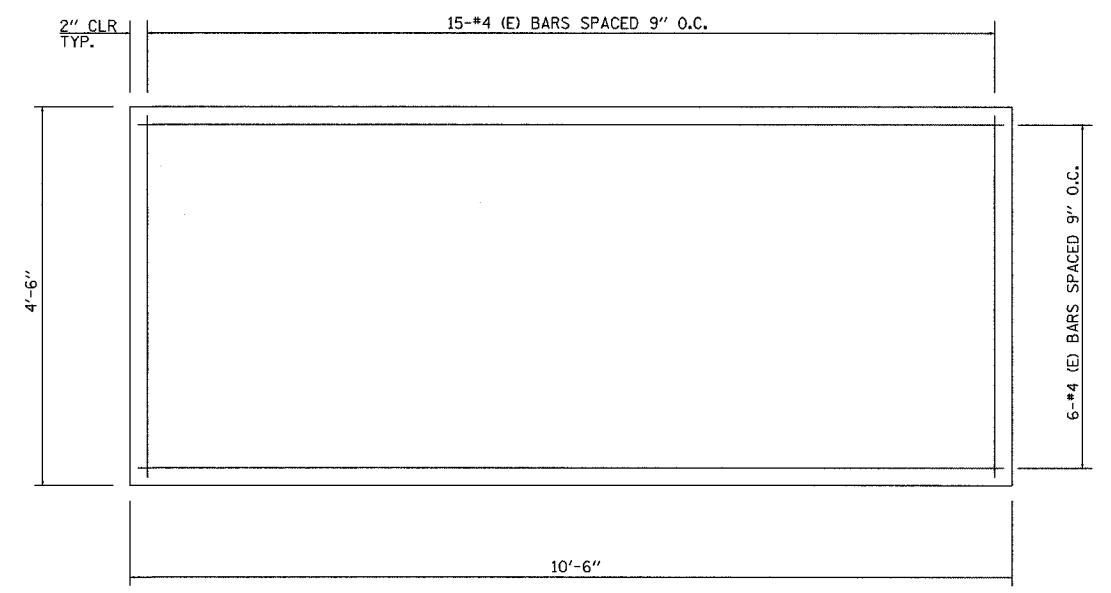
**TYPICAL GENERATOR CONCRETE PAD SECTION**



**GROUND WELL DETAIL**  
NOT TO SCALE

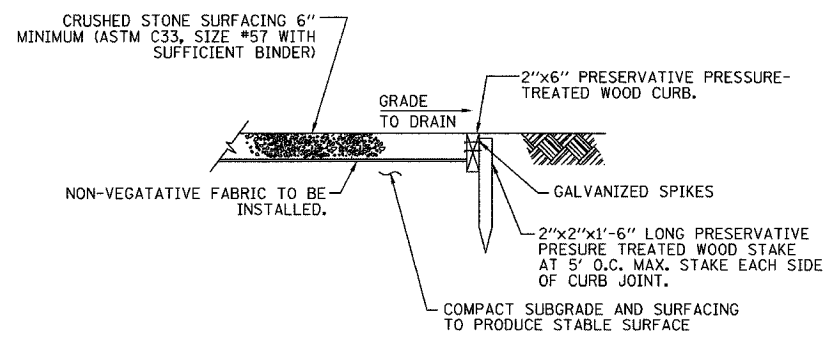


**CHAIN LINK FENCE**  
NOT TO SCALE

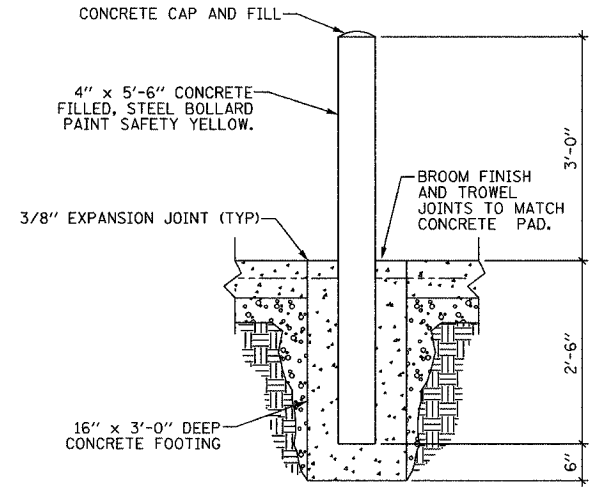


**GENERATOR CONCRETE PAD PLAN**

f<sub>c</sub> = 3500 psi  
ALL BARS DESIGNATED "(E)" SHALL BE EPOXY COATED



**WEED BARRIER DETAIL**  
NOT TO SCALE



**CONCRETE BOLLARD DETAIL**  
NOT TO SCALE

**Edwards AND Kelcey**  
ONE NORTH FRANKLIN  
CHICAGO, IL 60606  
PHONE: (312) 251-3000  
FAX: (312) 251-3015  
WEB: WWW.EDKORP.COM

REVISIONS	
NAME	DATE

ILLINOIS DEPARTMENT OF TRANSPORTATION  
F.A.I. 94/90 (DAN RYAN EXPRESSWAY)  
31st STREET to I-57  
SHELTER DETAILS  
(SHEET 1 OF 2)  
SCALE: NOT TO SCALE  
DATE: October 29, 2004  
DRAWN BY: JM  
CHECKED BY: CS

COMM-93

I:\231\2004\07\29\22 AM