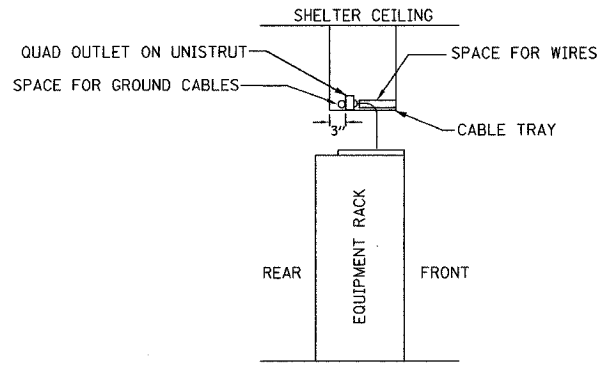
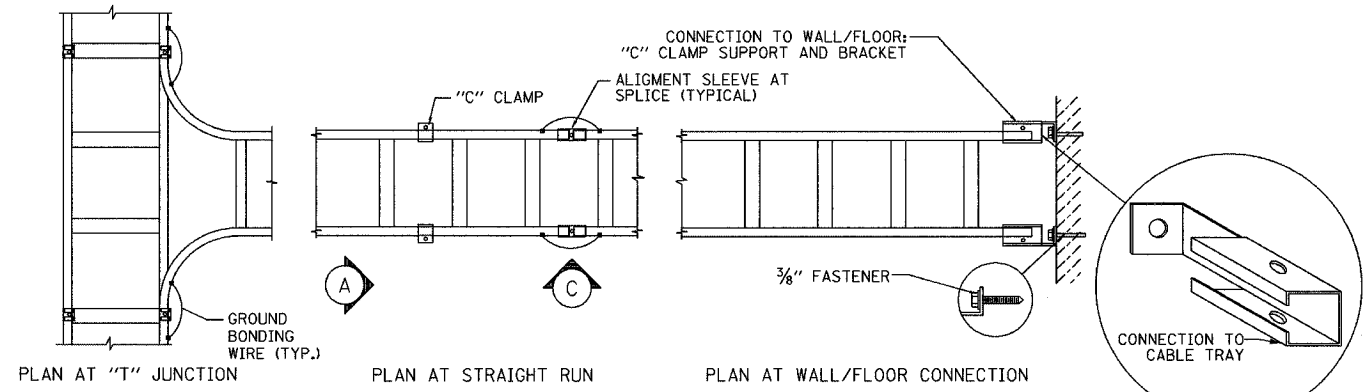


F.A.I. RTE.	SECTION	COUNTY	TOTAL SHEETS	SHEET NO.
94/90	2003-031I	COOK	976	860
STA.	TO STA.			
FED. ROAD DIST. NO.	ILLINOIS	FED. AID PROJECT		
62583				

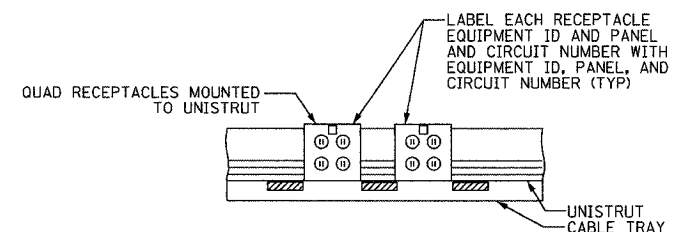


**TYPICAL EQUIPMENT RACK CROSS SECTION**  
NOT TO SCALE

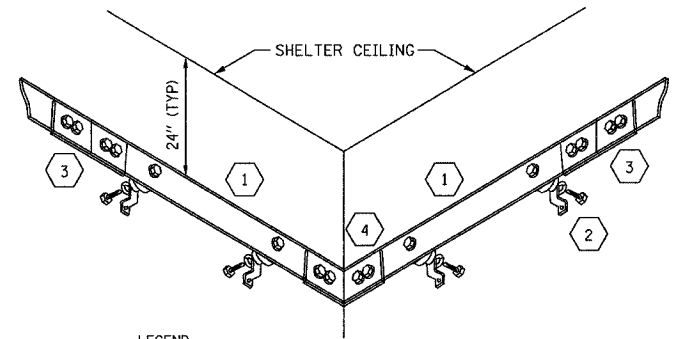


**CABLE TRAY- DETAILED PLAN VIEW**  
NOT TO SCALE

- NOTES:**
1. ALL BENDS IN THE INTERIOR GROUND WIRE SHALL BE 12-INCH NOMINAL AND 8-INCH MINIMUM.
  2. INSTALL INTERIOR GROUND BUS 7' 6" FROM THE FLOOR AND NOT CLOSER THAN 3" FROM THE CEILING UNLESS OTHERWISE DIRECTED BY THE ENGINEER.
  3. EACH SECTION OF INTERIOR CABLE TRAY SHALL BE BONDED TOGETHER USING TWO #6 AWG JUMPERS (ONE ON EACH SIDE) TO FORM AN ELECTRICALLY CONTINUOUS TRAY.
  4. ALL GROUNDING CONNECTIONS TO THE GROUND BUS AND EQUIPMENT SHALL BE MADE WITH DOUBLE HOLE HYDRAULICALLY INDENTED LUGS.

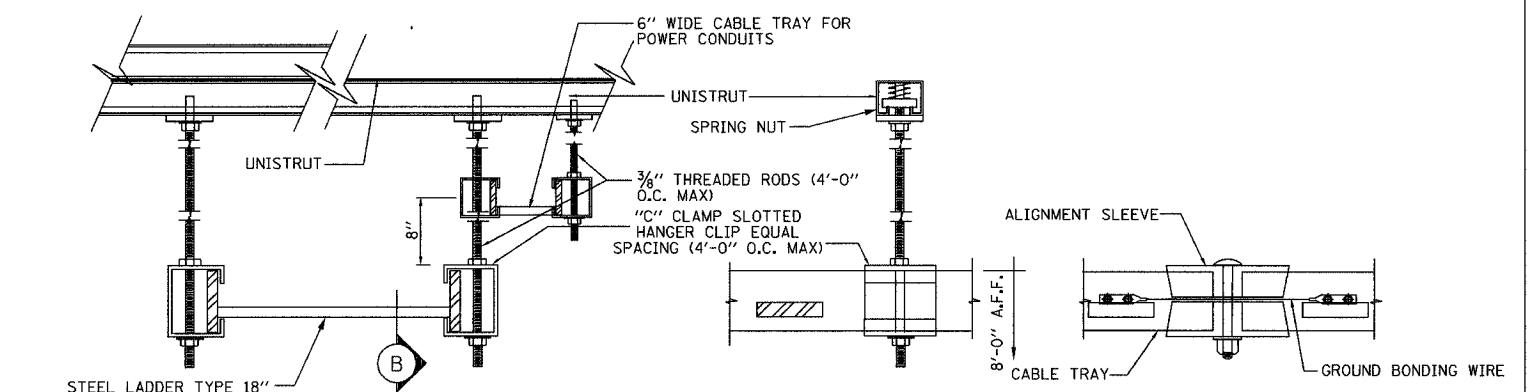


**CABLE TRAY OUTLETS**  
NOT TO SCALE  
(UPS RECEPTACLES TO BE ORANGE)

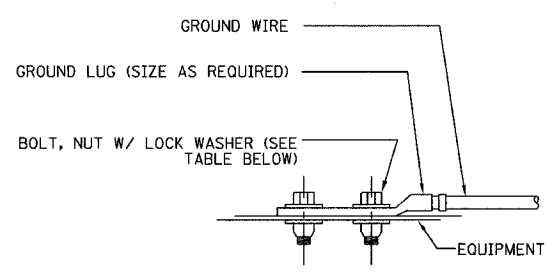


- LEGEND**
- 1 1/4" X 4" X (LENGTH) COPPER GROUND BAR
  - 2 STAND-OFF INSULATORS, MOUNTING BRACKETS AND HARDWARE
  - 3 2" X 6" SPLICE PLATE
  - 4 (1/4" THICK) 2" WIDE -90 DEGREE ELBOW
  - 5 STAINLESS STEEL MOUNTING BRACKET
  - 6 3/4" HEX HEAD CAP SCREW (2 PER MOUNT)
  - 7 LOCK WASHER AND FLAT WASHER (2 PER MOUNT)
  - 8 2" X 2" STAND-OFF INSULATOR

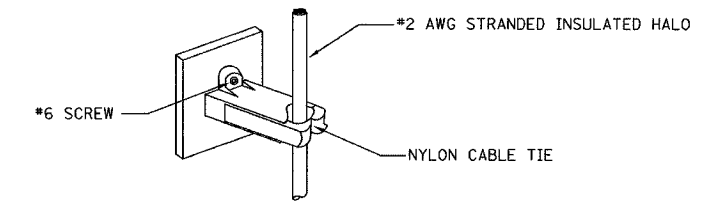
**GROUND BUS SYSTEM**  
NOT TO SCALE



**A SECTION THROUGH CABLE TRAY** NOT TO SCALE  
**B SECTION AT "C" CLAMP** NOT TO SCALE  
**C ELEVATION AT SPLICE** NOT TO SCALE



**TYPICAL EQUIPMENT GROUND CONNECTION**  
NOT TO SCALE



**GROUND WIRE STANDOFF DETAIL**  
NOT TO SCALE

WIRE SIZE	LUG #	BOLT SIZE
#4/0	53212	1/2" - 20 NC x 1/2" S.S. BOLT & NUT W/LOCK WASHERS
#2	53207	1/4" - 20 NC x 1/2" S.S. BOLT & NUT W/LOCK WASHERS
#6	53205	1/4" - 20 NC x 1/2" S.S. BOLT & NUT W/LOCK WASHERS

REVISIONS	
NAME	DATE

ILLINOIS DEPARTMENT OF TRANSPORTATION  
F.A.I. 94/90 (DAN RYAN EXPRESSWAY)  
31st STREET to I-57  
SHELTER DETAILS  
(SHEET 2 OF 2)  
SCALE: NOT TO SCALE  
DATE: October 29, 2004  
DRAWN BY: JM  
CHECKED BY: CS



P:\030009\0305\16\kard6\01020-01265.rvt 11/23/2004 07:29:23 AM