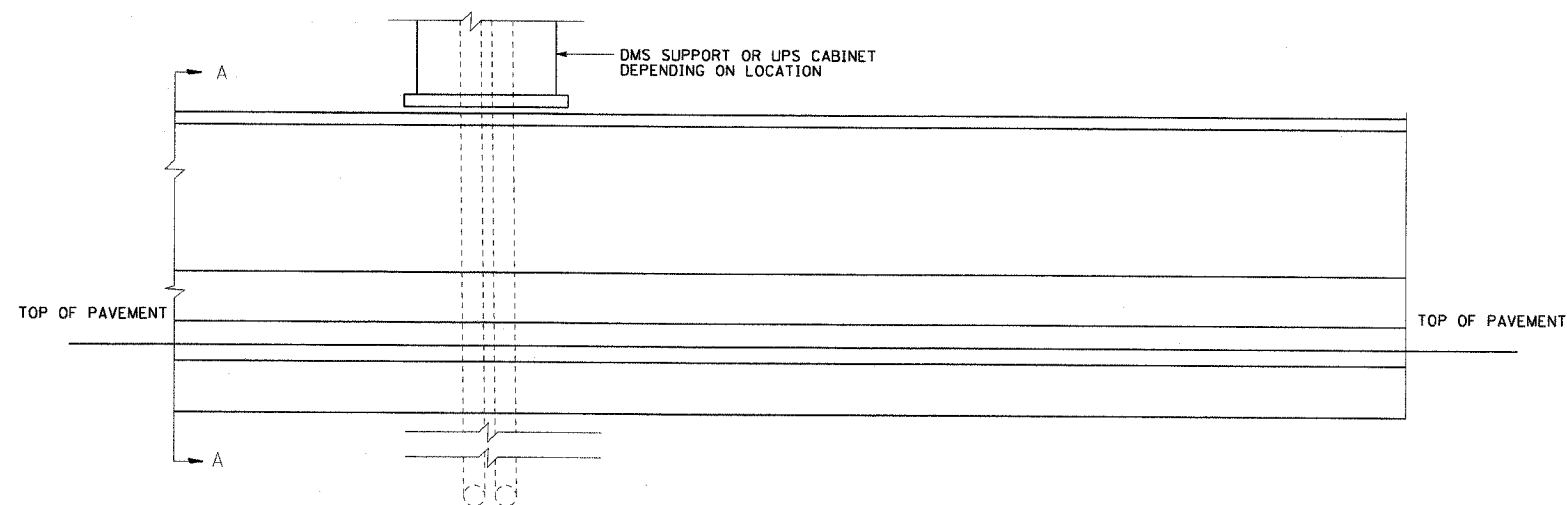


F.A.I. RTE.	SECTION	COUNTY	TOTAL SHEETS	SHEET NO.
90/94	2003-0311	COOK	976	896
STA.		TO STA.		
FED. ROAD DIST. NO. 1 ILLINOIS		FED. AID PROJECT		

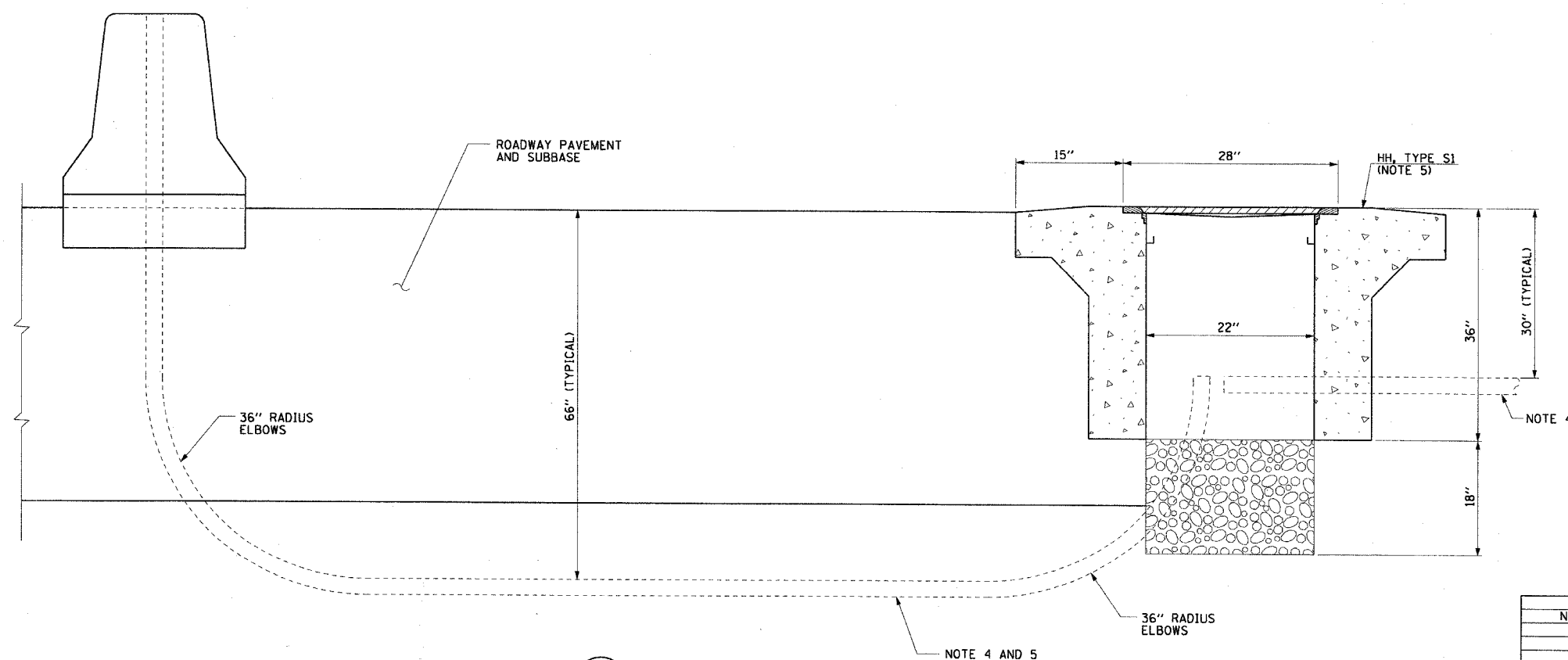
62583

NOTES:

1. SEE DRAWINGS ME-01 AND ME-02 FOR ELECTRICAL SYMBOLS AND ABBREVIATIONS.
2. UNLESS OTHERWISE STATED, ALL CONDUIT TO BE FURNISHED AND INSTALLED BY OTHERS UNDER A SEPARATE CONTRACT.
3. UNLESS OTHERWISE STATED, ALL ELECTRIC CABLE TO BE FURNISHED AND INSTALLED UNDER THIS CONTRACT.
4. CONDUIT AND CABLE SIZES AS SHOWN ON THE PLAN SHEETS DMS-01 THROUGH DMS-09.
5. HANDHOLE AND CONDUIT ENTRY CONFIGURATION IS TYPICAL. DEPENDING ON LOCATION HH MAY BE INSTALLED IN SHOULDER OR IN GRASS OUTSIDE OF THE ROADWAY CURB AND GUTTER. WHEN TWO HANDHOLES ARE SHOWN ON THE PLAN SHEETS, DMS-01 THROUGH DMS-09, ONE CONDUIT WILL BE INSTALLED IN EACH HANDHOLE TO KEEP POWER AND CONTROL CABLES SEPARATE.



1
DT-01
MEDIAN WALL DUCT DETAIL ELEVATION



2
DT-01
SECTION A-A

REVISIONS	
NAME	DATE

ILLINOIS DEPARTMENT OF TRANSPORTATION
 F.A.I. 90/94 (DAN RYAN EXPRESSWAY)
 31st STREET TO I-57
 DUCT DETAIL FOR CANTELEVER MOUNTED
 DMS (NO JUNCTION BOX IN BARRIER WALL)
 SCALE: NONE
 DATE: October 29, 2004
 DRAWN BY: HAR
 CHECKED BY: BMW