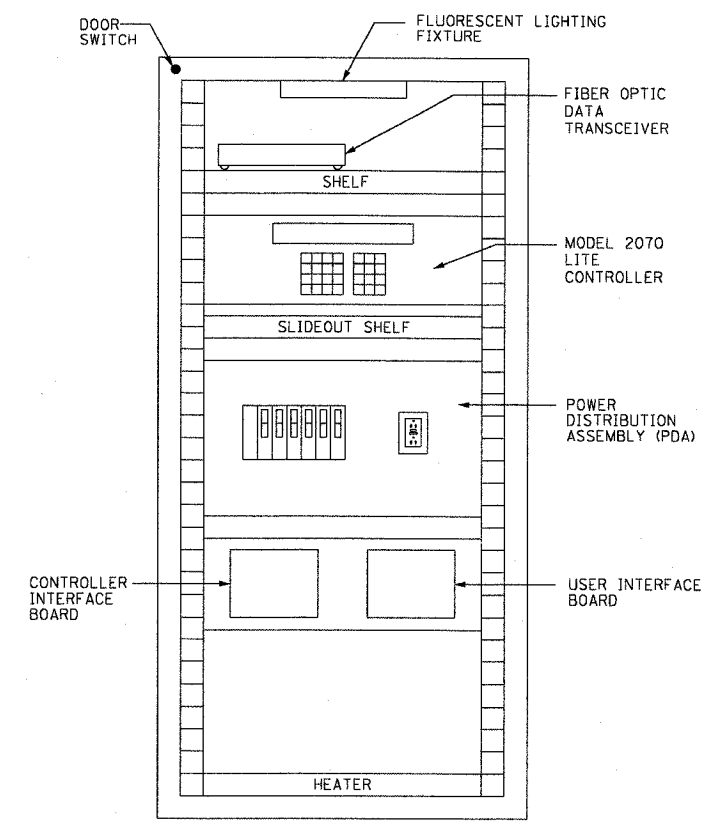


F.A.I. RTE.	SECTION	COUNTY	TOTAL SHEETS	SHEET NO.
90/94	2003-0311	COOK	976	100
STA.	TO STA.			
FED. ROAD DIST. NO. 1	ILLINOIS	FED. AID PROJECT		

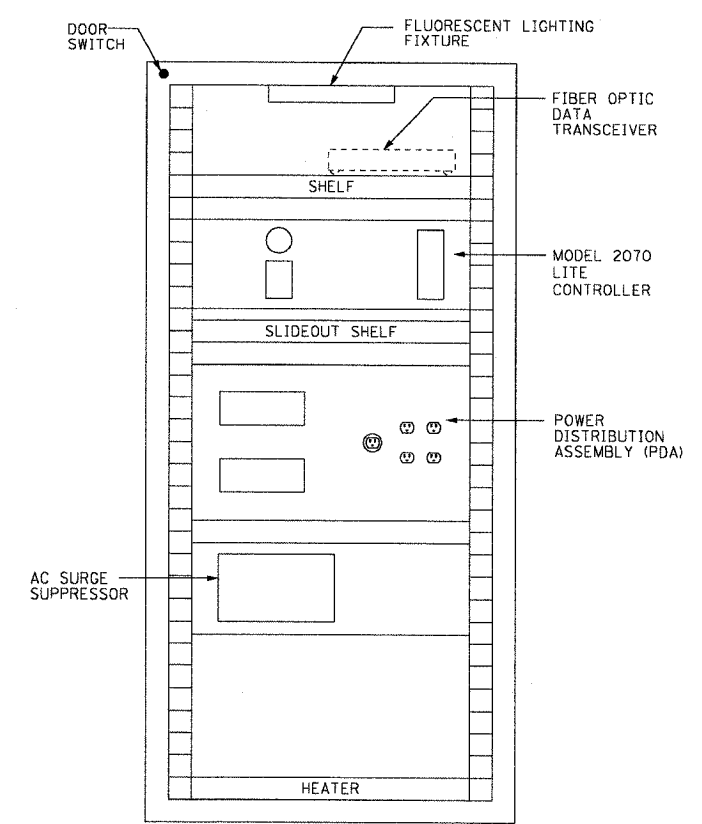
62583

NOTES:

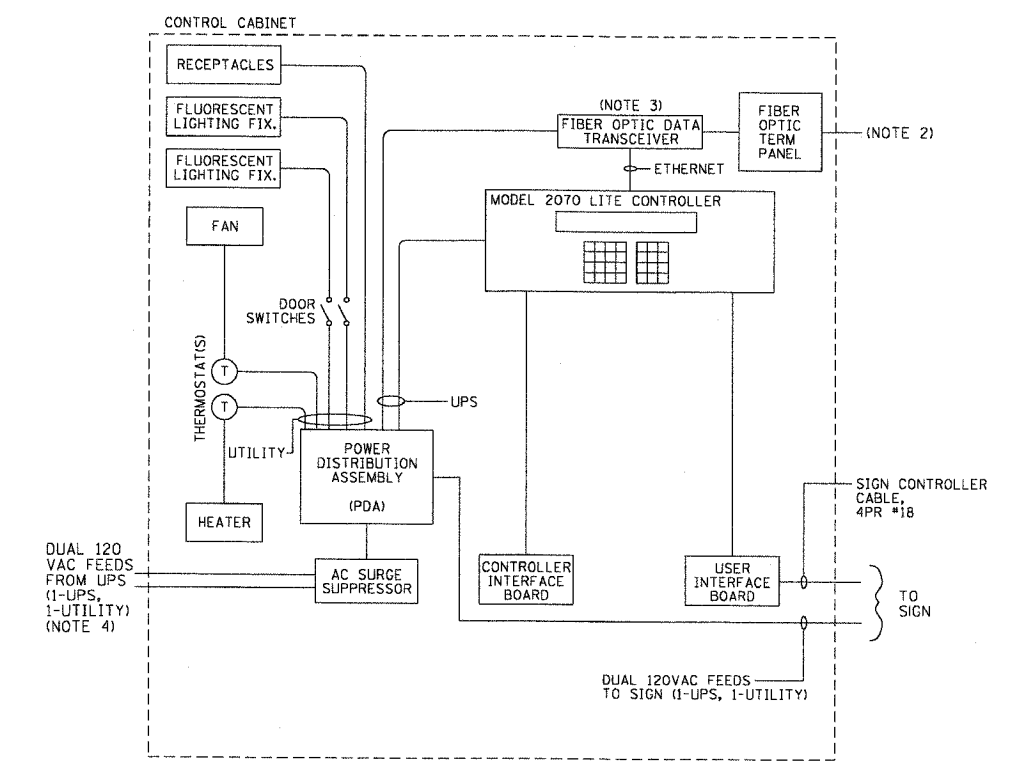
1. SEE DRAWINGS ME-01 AND ME-02 FOR ELECTRICAL SYMBOLS AND ABBREVIATIONS.
2. FIBER OPTIC CABLE AND TERMINATIONS AS SHOWN ON COMM PLANS AND DETAIL SHEETS.
3. A DEDICATED LEASED LINE CONNECTION AND MODEM WILL BE TEMPORARILY USED FOR SIGNS DMS-30, DMS-02, DMS-08, AND PERMANENTLY FOR SIGN DMS-29. TEMPORARY CONNECTIONS WILL REQUIRE FIBER OPTIC DATA TRANSCEIVERS ONCE THE COMMUNICATION NETWORK IS IN PLACE.
4. SEE DRAWING DT-06 FOR CONNECTION TO UPS CABINET.



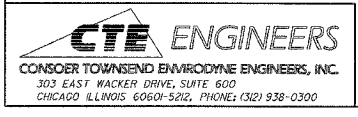
CONTROL CABINET LAYOUT
FRONT VIEW (TYPICAL)
(MODEL 334)



CONTROL CABINET LAYOUT
BACK VIEW (TYPICAL)
(MODEL 334)



CONTROL CABINET SINGLE
LINE DIAGRAM (TYPICAL)
(MODEL 334)



REVISIONS	
NAME	DATE

ILLINOIS DEPARTMENT OF TRANSPORTATION
F.A.I. 90/94 (DAN RYAN EXPRESSWAY)
31st STREET TO I-57

**DYNAMIC MESSAGE SIGN
CONTROLLER CABINET DETAILS**

SCALE: NOT TO SCALE
DATE: October 29, 2004

DRAWN BY: BHP
CHECKED BY: BMW

DT-05

10/15/2004 08:44:47 AM