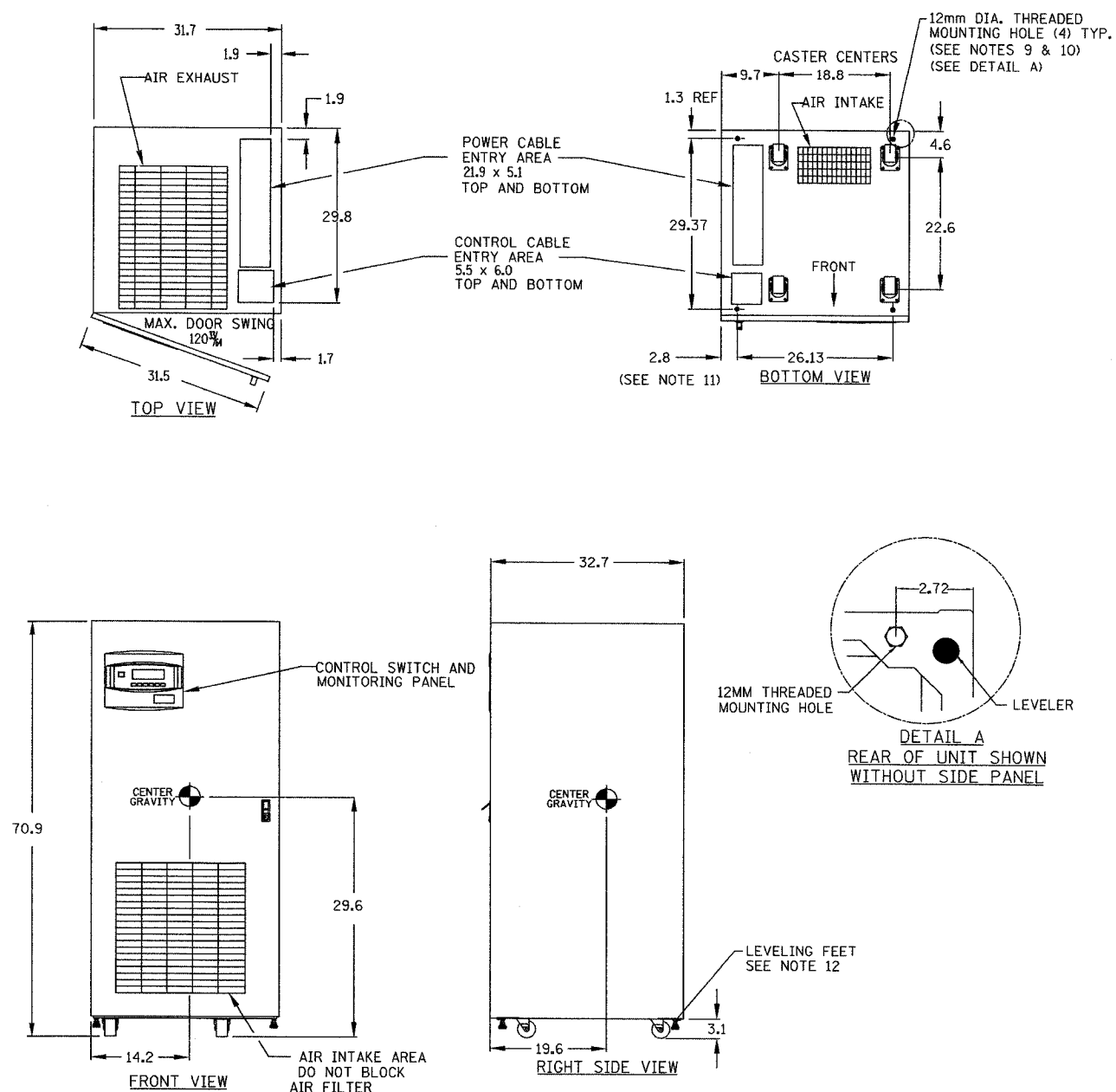


SECTION	COUNTY	TOTAL SHEETS	SHEET NO.
2003-0311	COOK	976	413
STA. TO STA.		FED. ROAD DIST. NO. ILLINOIS FED. AID PROJECT	
		62583	



- NOTES:**
1. ALL DIMENSIONS ARE IN INCHES.
  2. 24" MINIMUM CLEARANCE ABOVE UNIT REQUIRED FOR AIR EXHAUST.
  3. INSTALLATION AND SERVICE ACCESS REQUIRED IN FRONT ONLY. RH SIDE ACCESS RECOMMENDED FOR MAXIMUM EASE OF INSTALLATION.
  4. KEEP CABINET WITHIN 15 DEG. OF VERTICAL WHILE HANDLING.
  5. TOP AND BOTTOM CABLE ENTRY AVAILABLE THROUGH REMOVABLE ACCESS PLATES. REMOVE PUNCH TO SUIT CONDUIT SIZE AND REPLACE.
  6. COLOR - IBM OFF WHITE.
  7. UNIT BOTTOM IS STRUCTURALLY ADEQUATE FOR FORKLIFT HANDLING.
  8. OPEN DOOR TO REPLACE AIR FILTER, DISPOSABLE TYPE. SIZE 1 x 25 x 25
  9. THREADED MOUNTING HOLES USED FOR SEISMIC ANCHORING OR FLOOR STAND. NOTE, IF FLOOR STAND IS USED THE WEIGHT OF THE UNIT MUST BE SUPPORTED UNDER ALL CASTERS.
  10. EACH MOUNTING LOCATION IS SUPPORTED BY (2) 10 GA. (.135") GALVANIZED STEEL. THE THREADED 12MM INSERT IS APPROX. 3/4" DEEP. MOUNTING BOLTS MUST BE THREADED INTO UNIT MOUNTING HOLES FROM UNDERNEATH UNIT BASE.
  11. INCLUDES SIDE PANEL. REFER TO DETAIL A FOR DIMENSION TO FRAME WITH SIDE PANEL REMOVED. SIDE PANELS ARE REMOVED BETWEEN ADJACENT UNITS WHICH ARE BOLTED TOGETHER.
  12. LEVELING FEET ARE NOT DESIGNED TO CARRY THE FULL WEIGHT OF THE CABINET. FINGER-TIGHT LEVELER AGAINST THE FLOOR. THEN TIGHTEN WITH A WRENCH LESS THAN 2 TURNS FOR FRICTION FIT AGAINST FLOOR.

KVA RATING	VOLTAGE		WEIGHT		HEAT REJECTION BTU/HR	COOLING AIR CFM
	INPUT	OUTPUT	LBS	KG		
40	208	208	2200	1000	11000	720

**Edwards AND Kelcey**  
 ONE NORTH FRANKLIN  
 CHICAGO, IL 60606  
 PHONE: (312) 251-3000  
 FAX: (312) 251-3015  
 WEB: WWW.EKCORP.COM

REVISIONS		ILLINOIS DEPARTMENT OF TRANSPORTATION F.A.I. 94/90 (DAN RYAN EXPRESSWAY) 31st STREET to I-57
NAME	DATE	
		OUTLINE DRAWING 40 KVA UPS MODULE NPOWER
SCALE: NOT TO SCALE		DRAWN BY: SST
DATE: October 29, 2004		CHECKED BY: CS

DT-12F

10/15/2004 11:53:14 AM