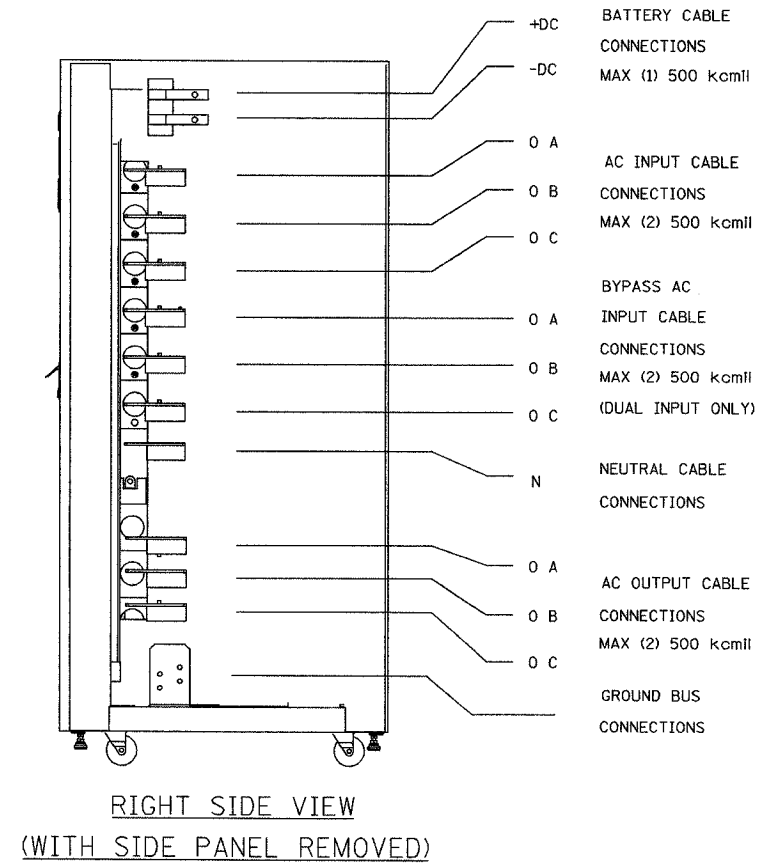
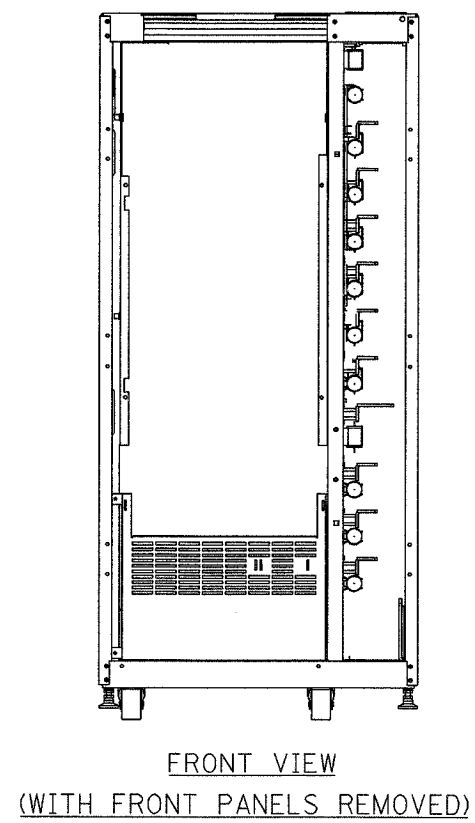


SECTION	COUNTY	TOTAL SHEETS	SHEET NO.
2003-0311	COOK	976	914
STA. TO STA.		FED. ROAD DIST. NO. - ILLINOIS FED. AID PROJECT	
		62583	



DC INPUT  
BATTERY CABLE  
CONNECTIONS  
MAX (1) 500 kcmil

+DC  
-DC

0 A  
0 B  
0 C

AC INPUT CABLE  
CONNECTIONS  
MAX (2) 500 kcmil

0 A  
0 B  
0 C

BYPASS AC  
INPUT CABLE  
CONNECTIONS  
MAX (2) 500 kcmil  
(DUAL INPUT ONLY)

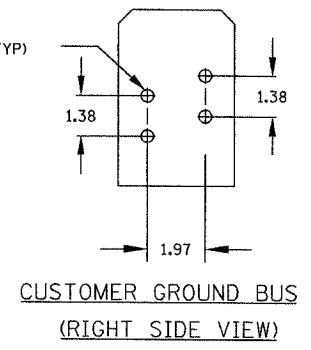
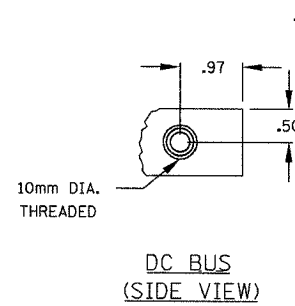
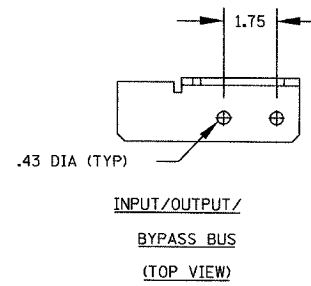
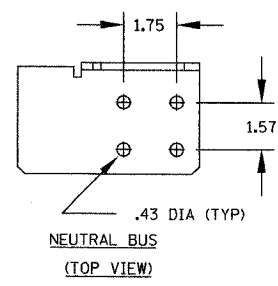
0 A  
0 B  
0 C

N

AC OUTPUT CABLE  
CONNECTIONS  
MAX (2) 500 kcmil

0 A  
0 B  
0 C

GROUND BUS  
CONNECTIONS



- NOTES:
1. ALL DIMENSIONS ARE IN INCHES.
  2. TOP AND BOTTOM CABLE ENTRY AVAILABLE THROUGH REMOVABLE ACCESS PLATES. REMOVE, PUNCH TO SUIT CONDUIT SIZE, AND REPLACE.
  3. CONTROL WIRING AND POWER WIRING MUST BE RUN IN SEPARATE CONDUIT. OUTPUT CABLES MUST BE RUN IN A SEPARATE CONDUIT FROM INPUT CABLES.
  4. ALUMINUM AND COPPER CLAD ALUMINUM CABLES ARE NOT RECOMMENDED.
  5. ALL WIRING IS TO BE IN ACCORDANCE WITH NATIONAL AND LOCAL ELECTRICAL CODES.

**Edwards AND Kelcey**  
 ONE NORTH FRANKLIN  
 CHICAGO, IL 60606  
 PHONE: (312) 251-3000  
 FAX: (312) 251-3015  
 WEB: WWW.EXCORP.COM

REVISIONS	
NAME	DATE

ILLINOIS DEPARTMENT OF TRANSPORTATION  
 F.A.I. 94/90 (DAN RYAN EXPRESSWAY)  
 31st STREET to I-57

TERMINAL DETAILS  
 40 KVA UPS MODULE

SCALE: NOT TO SCALE  
 DATE: October 29, 2004

DRAWN BY: SST  
 CHECKED BY: CS

DT-12G

P:\030019\035\Vis\004\ups02072a.dwg 10/14/2004 09:23:53 AM