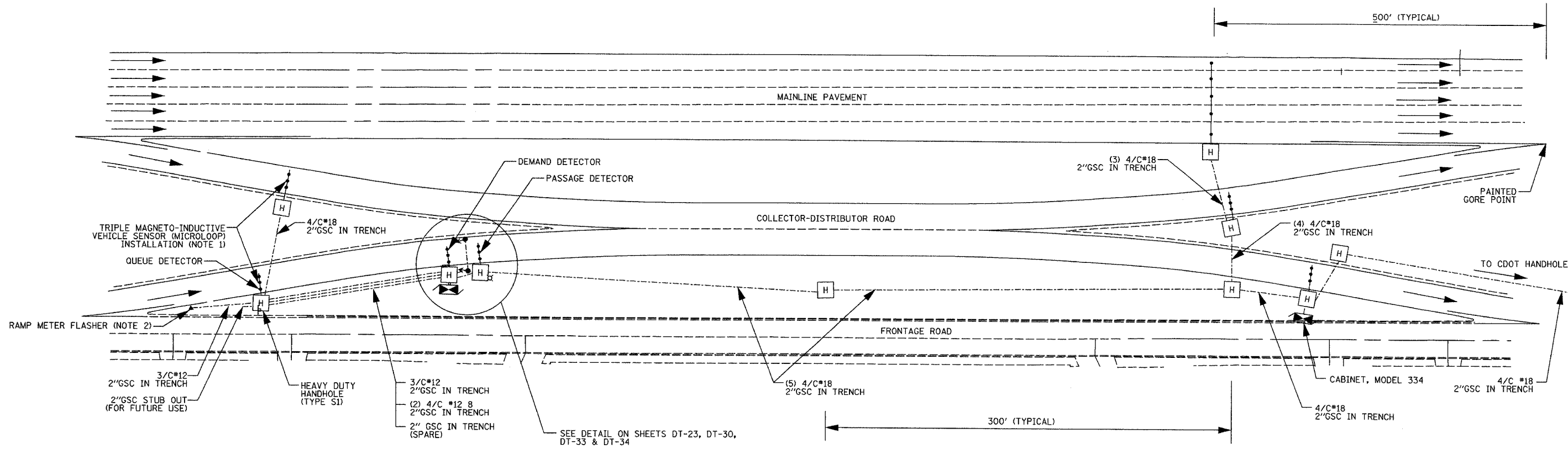


SECTION	COUNTY	TOTAL SHEETS	SHEET NO.
2003-0311	COOK	976	438
STA.	TO STA.		
FED. ROAD DIST. NO.	ILLINOIS	FED. AID PROJECT	
62583			



**MAINLINE AND ENTRANCE/EXIT RAMP
DETECTION SYSTEM WITH
COLLECTOR-DISTRIBUTOR ROAD**

NOTES:

1. FOR MAGNETO-INDUCTIVE VEHICLE SENSOR (MICROLOOP) INSTALLATION, SEE DETAILS DT-23-27.
2. FOR RAMP METER FLASHER DETAIL, SEE DETAIL DT-35
3. FOR RAMP METER SIGNAL INSTALLATION, SEE DETAILS DT-33 AND DT-34.
4. FOR TYPICAL RAMP METER ENTRANCE AND EXIT RAMP DETECTION SYSTEM INSTALLATION DETAILS WITHOUT A COLLECTOR-DISTRIBUTOR ROAD, SEE DETAIL DT-31.
5. CABINET LOCATION AS SHOWN ON THE PLANS OR AS DIRECTED BY THE ENGINEER. CABINET SHALL BE PLACED TO MAXIMIZE THE VIEW OF THE RAMP METER SIGNAL HEADS AND TO MINIMIZE THE CHANCE OF BEING KNOCKED DOWN.

DT-32

**Edwards
AND Kelcey**
ONE NORTH FRANKLIN
CHICAGO, IL 60606
PHONE: (312) 251-3000
FAX: (312) 251-3015
WEB: WWW.EKCORP.COM

REVISIONS	
NAME	DATE

ILLINOIS DEPARTMENT OF TRANSPORTATION
F.A.I. 94/90 (DAN RYAN EXPRESSWAY)
31st STREET to I-57

MAINLINE AND ENTRANCE/EXIT RAMP
DETECTION SYSTEM WITH
COLLECTOR-DISTRIBUTOR ROAD

SCALE: NTS
DATE: October 29, 2004

DRAWN BY: NB
CHECKED BY: CC

10/15/2004 0:40:56 PM