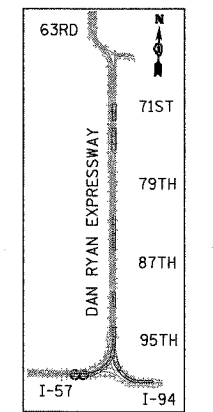
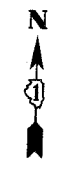
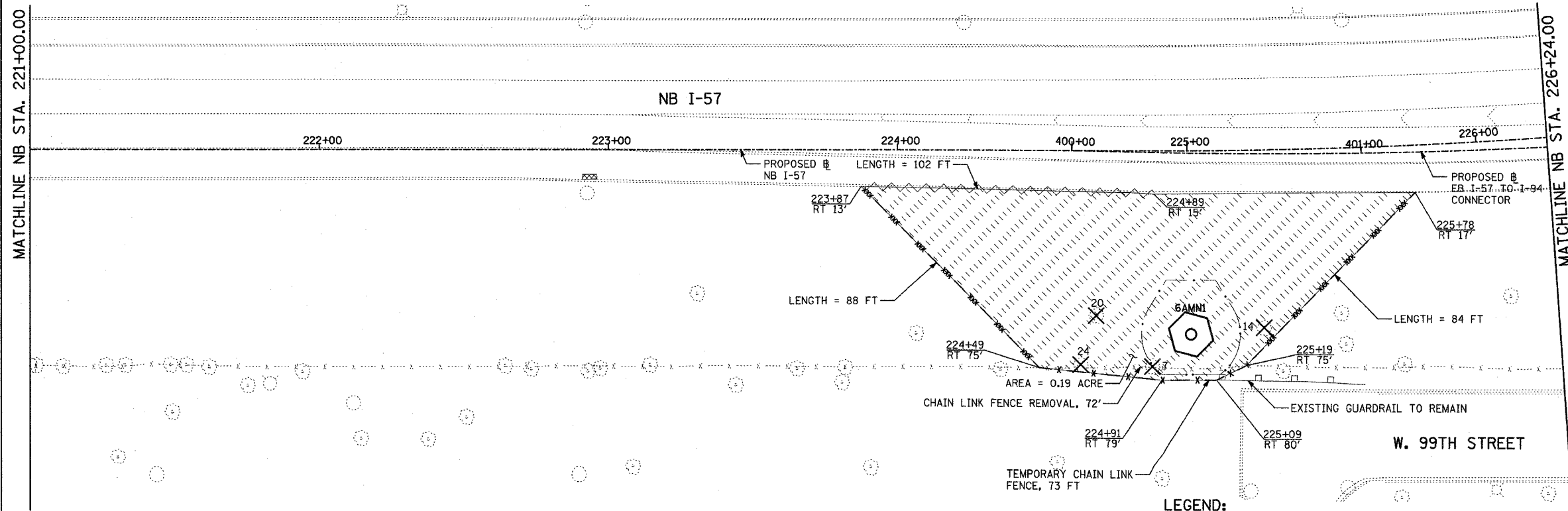
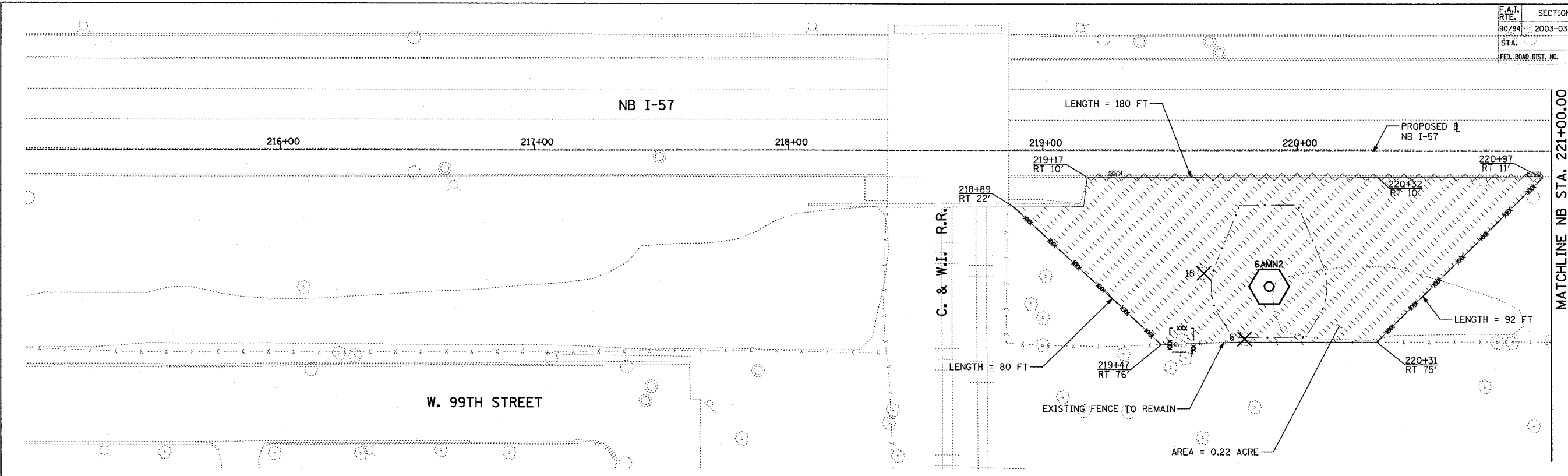
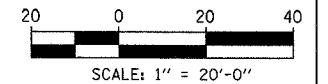


|                     |           |                  |              |           |
|---------------------|-----------|------------------|--------------|-----------|
| F.A.I. RTE.         | SECTION   | COUNTY           | TOTAL SHEETS | SHEET NO. |
| 90/94               | 2003-0311 | COOK             | 97           | 412       |
| STA.                | TO STA.   |                  |              |           |
| FED. ROAD DIST. NO. | ILLINOIS  | FED. AID PROJECT |              |           |

62583



LOCATION MAP



- LEGEND:**
- TEMPORARY EROSION CONTROL SEEDING
  - PERIMETER EROSION BARRIER
  - INLET FILTER, TO BE INSTALLED IN OFF PROJECT DRAINAGE STRUCTURES ACCEPTING STORMWATER RUNOFF
  - TEMPORARY FENCE (60' PER TREE)
  - LIMITS OF GRADING
  - TREE REMOVAL (UNIT) (NO UNIT SHOWN = <6)

| REVISIONS |      |
|-----------|------|
| NAME      | DATE |
|           |      |
|           |      |
|           |      |
|           |      |
|           |      |
|           |      |
|           |      |
|           |      |
|           |      |
|           |      |

ILLINOIS DEPARTMENT OF TRANSPORTATION  
 F.A.I. 90/94 (DAN RYAN EXPRESSWAY)  
 31st STREET TO I-57  
 EROSION CONTROL PLAN  
 NB I-57  
 NB I-57 STA. 215+00.00 TO 226+24.00

SCALE: 1"=20'  
 DATE: OCTOBER 29, 2004

DRAWN BY: RTM, JPA  
 CHECKED BY: JPM, MAG

**TYLIN INTERNATIONAL**

01/22/2004 10:53:57 AM