

F.A.U. RTE.	SECTION	COUNTY	TOTAL SHEETS	SHEET NO.
2714	2003-095RS	COOK	24	1

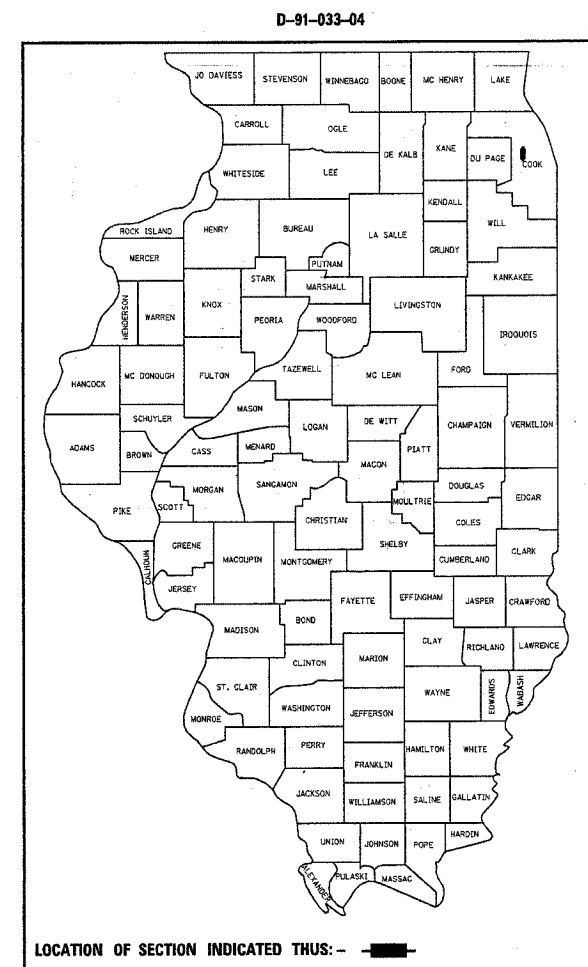
CONTRACT NO. 62680

STATE OF ILLINOIS
DEPARTMENT OF TRANSPORTATION
DIVISION OF HIGHWAYS

**PROPOSED
HIGHWAY PLANS**
F.A.U. 2714 (25th AVE.)
I-290 (EISENHOWER EXPY.) TO 26th ST.
SECTION: 2003-095RS
RESURFACING (MAINTENANCE)
COOK COUNTY
C-91-043-04

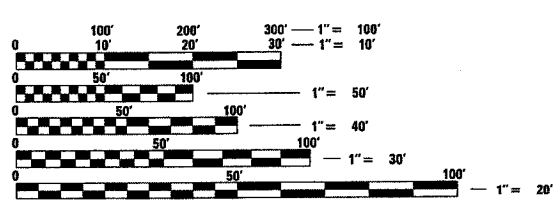
FOR INDEX OF SHEETS, SEE SHEET NO. 2

IMPROVEMENT LOCATED IN THE
VILLAGE OF BROADVIEW



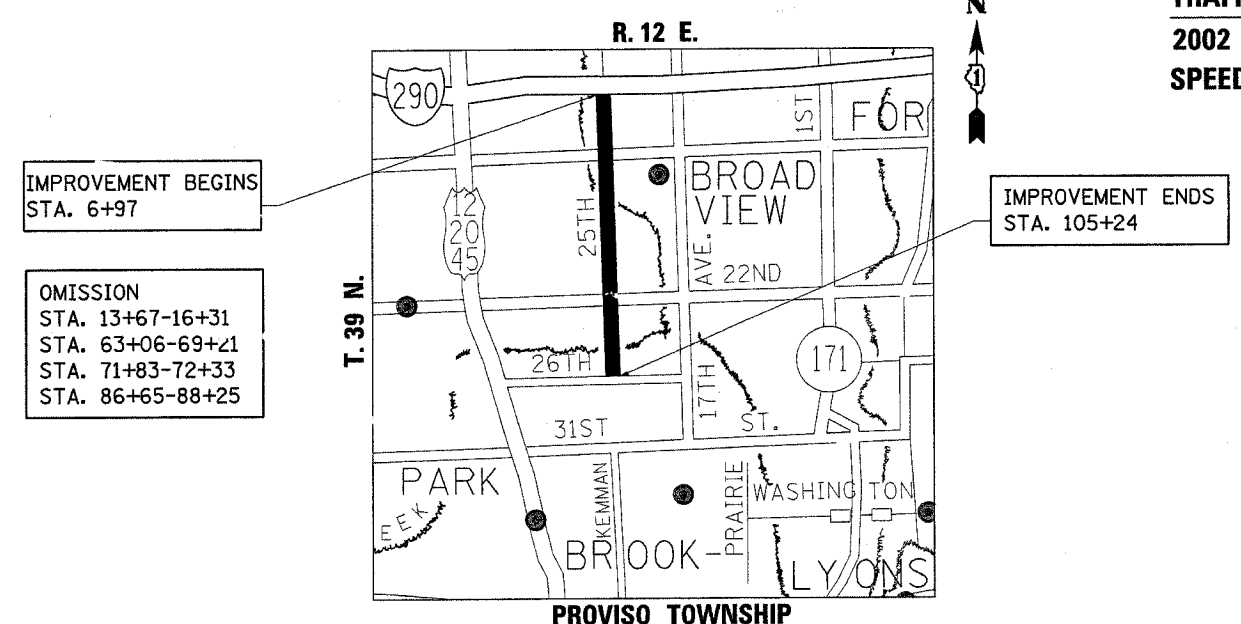
LOCATION OF SECTION INDICATED THUS: - [Symbol] -

TRAFFIC DATA:
2002 ADT - 21,800
SPEED LIMIT - 30 TO 35 MPH



FULL SIZE PLANS HAVE BEEN PREPARED USING STANDARD ENGINEERING SCALES. REDUCED SIZED PLANS WILL NOT CONFORM TO STANDARD SCALES. IN MAKING MEASUREMENTS ON REDUCED PLANS, THE ABOVE SCALES MAY BE USED.

J.U.L.I.E.
JOINT UTILITY LOCATION INFORMATION FOR EXCAVATION
1-800-892-0123



GROSS LENGTH OF IMPROVEMENT = 9827 LIN. FT. = 1.861 MILES
NET LENGTH OF IMPROVEMENT = 8738 LIN. FT. = 1.654 MILES

STATE OF ILLINOIS
DEPARTMENT OF TRANSPORTATION
DIVISION OF HIGHWAYS

SUBMITTED October 27, 20 04

Dina O'Keefe/PP
DISTRICT ENGINEER

December 10, 20 04
Mike Hine/PP
ENGINEER OF DESIGN AND ENVIRONMENT

December 10, 20 04
Victor Madenka
DIRECTOR, DIVISION OF HIGHWAYS

PRINTED BY THE AUTHORITY
OF THE STATE OF ILLINOIS

DIST. 1 DESIGN - PLAN PREPARATION ENGINEER: KEN ENG / I. RAYYAN (847) 705-4557

140110103 10/1/04