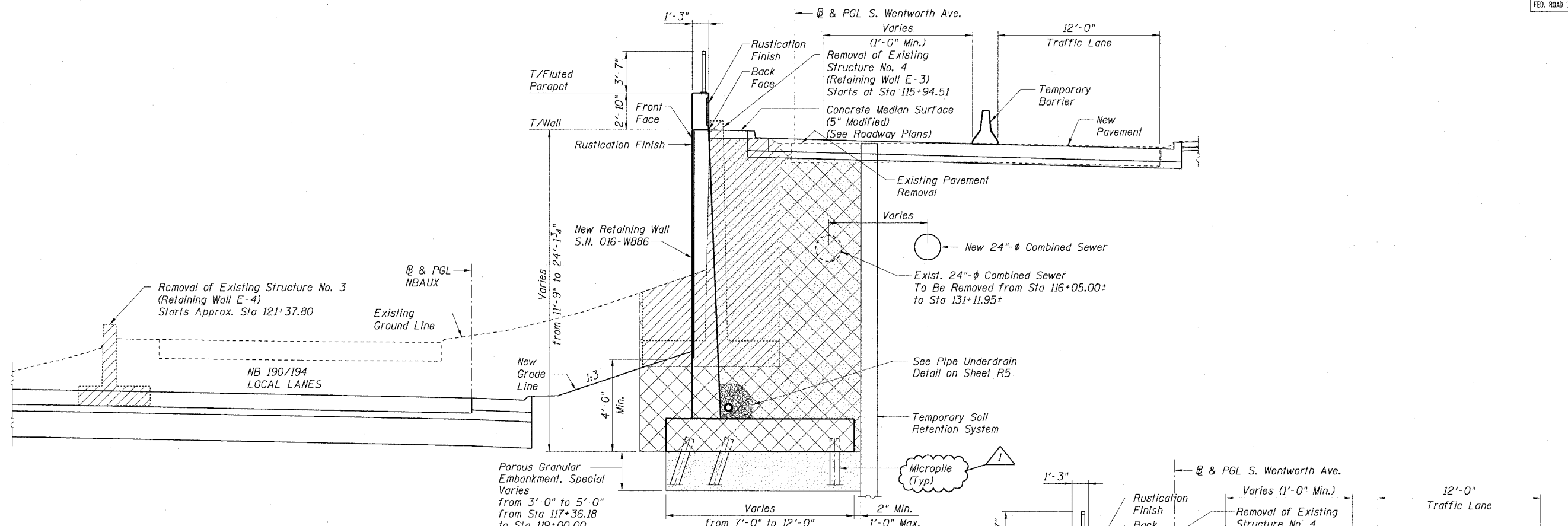


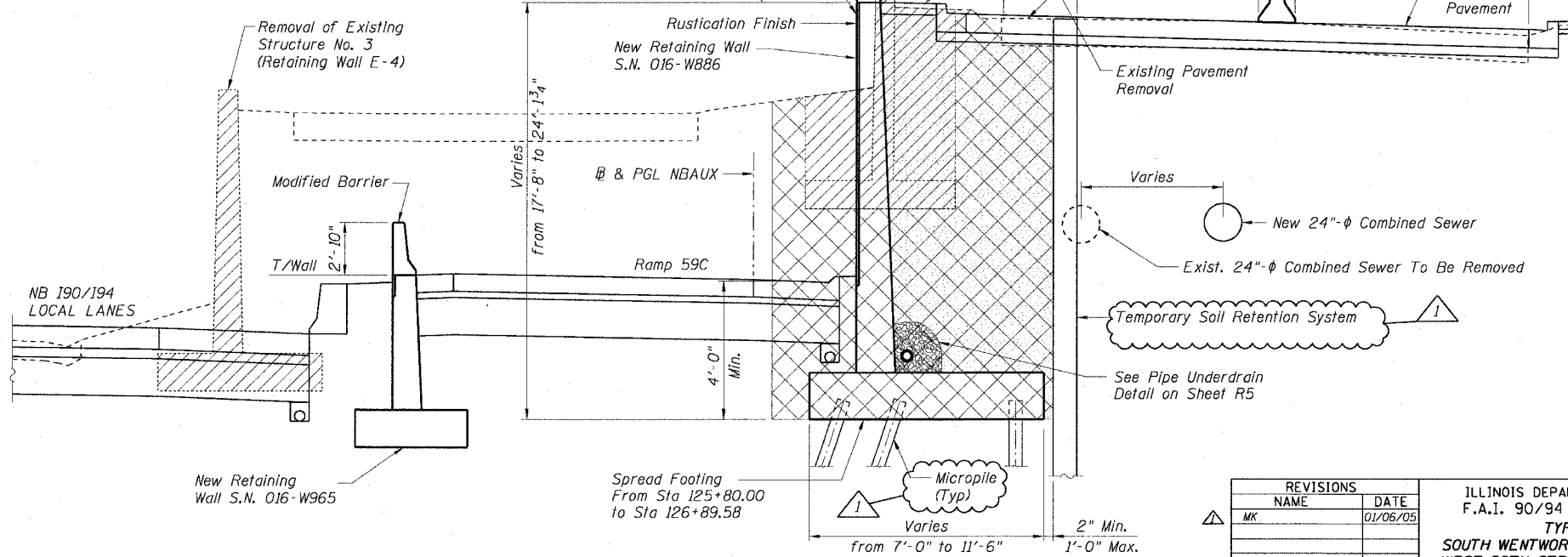
STATE OF ILLINOIS  
DEPARTMENT OF TRANSPORTATION

F.A.I. RTE.	SECTION	COUNTY	TOTAL SHEETS	SHEET NO.
90/94	2021-922PT.1-AC	COOK	460	233
STA.	TO STA.			
FED. ROAD DIST. NO. 1	ILLINOIS	FED. AID PROJECT		

62693



**TYPICAL SECTION RETAINING WALL S.N. 016-W886**  
**STA 115+75.00 TO STA 123+75.00**  
(Looking North)



**TYPICAL SECTION RETAINING WALL S.N. 016-W886**  
**STA 123+75.00 TO STA 126+89.58**  
(Looking North)

**LEGEND**

- Structure Excavation
- Porous Granular Embankment
- Removal of Existing Structures

REVISIONS	
NAME	DATE
MK	01/06/05