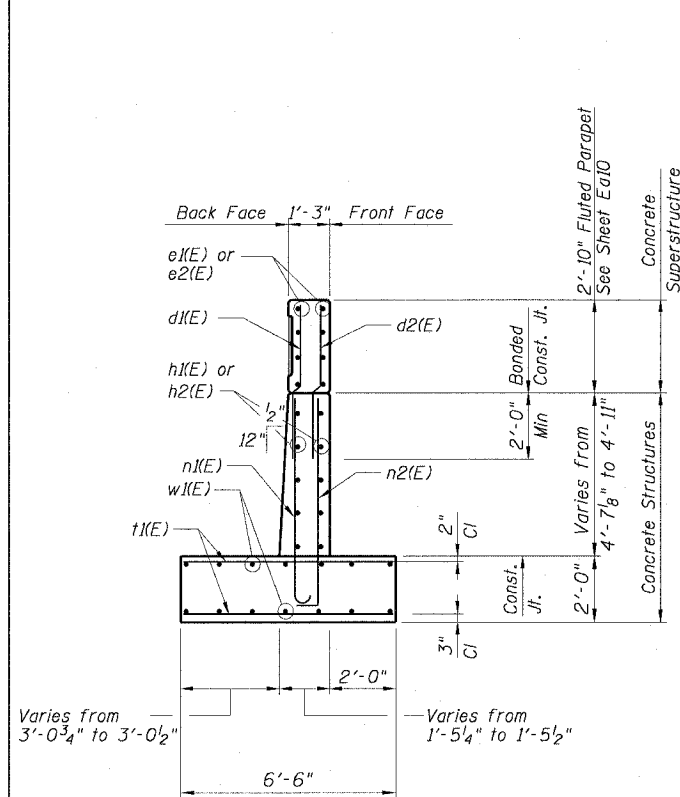


STATE OF ILLINOIS
DEPARTMENT OF TRANSPORTATION

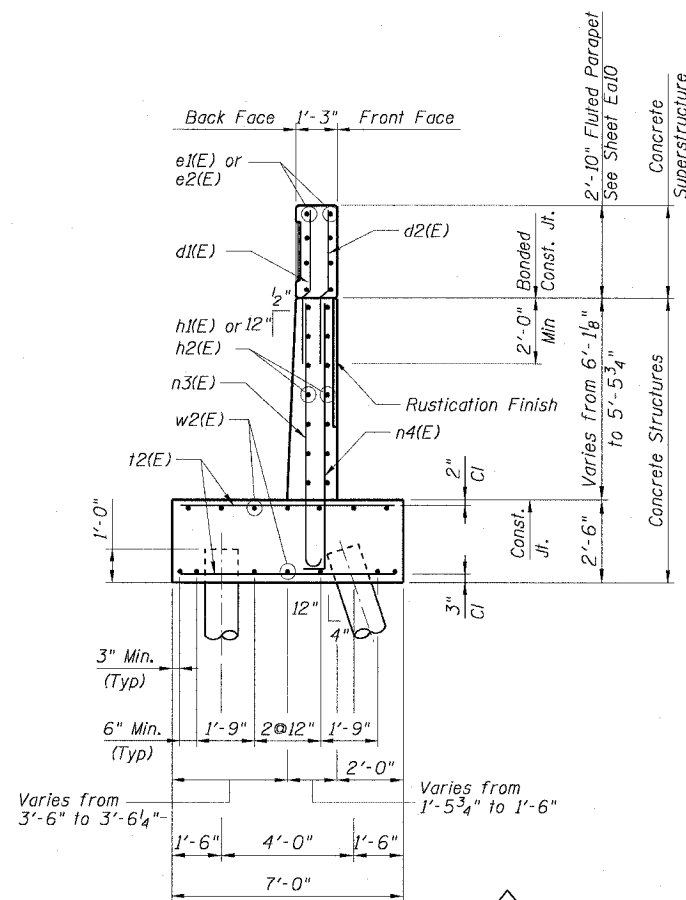
F.A.I. RTE.	SECTION	COUNTY	TOTAL SHEETS	SHEET NO.
90/94	2021-922PT.1-AC	COOK	460	283
STA.	TO STA.			
FED. ROAD DIST. NO. 1	ILLINOIS	FED. AID PROJECT		

62693



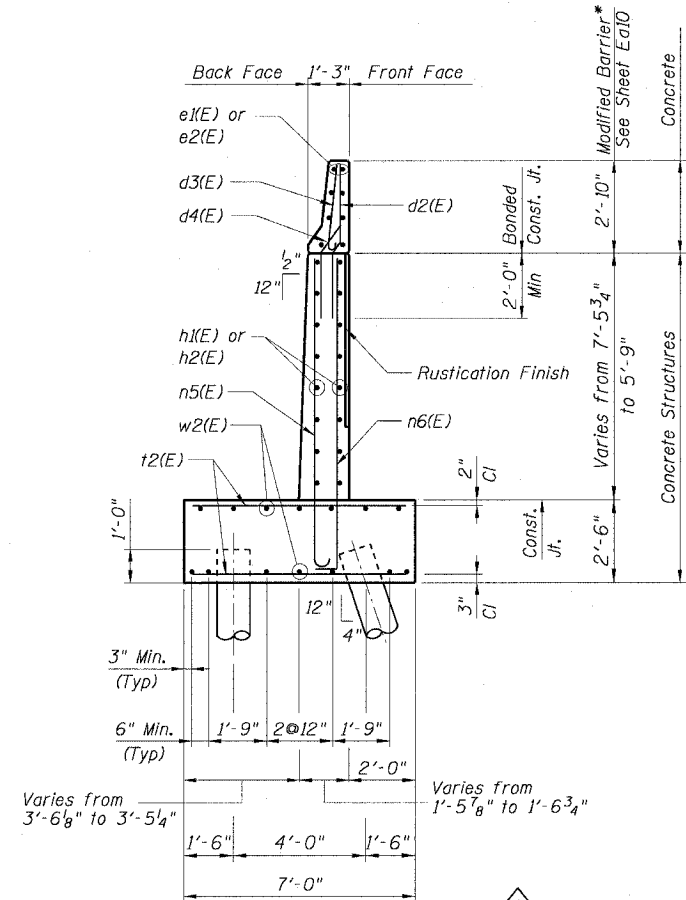
SECTION A-A

Sta. 509+41.43 to Sta. 509+91.32
Maximum Applied Bearing Pressure: 2.35 Ksf



SECTION B-B

Sta. 509+91.32 to Sta. 510+65.95
Micropile Data:
No. Req'd: 26 including one Proof Load Test
Design Loads:
Back Row: 30 tons vertical, 2 tons horizontal
Front Row: 30 tons vertical, 8 tons horizontal**
Design Displacement: 1/4" horizontal max.

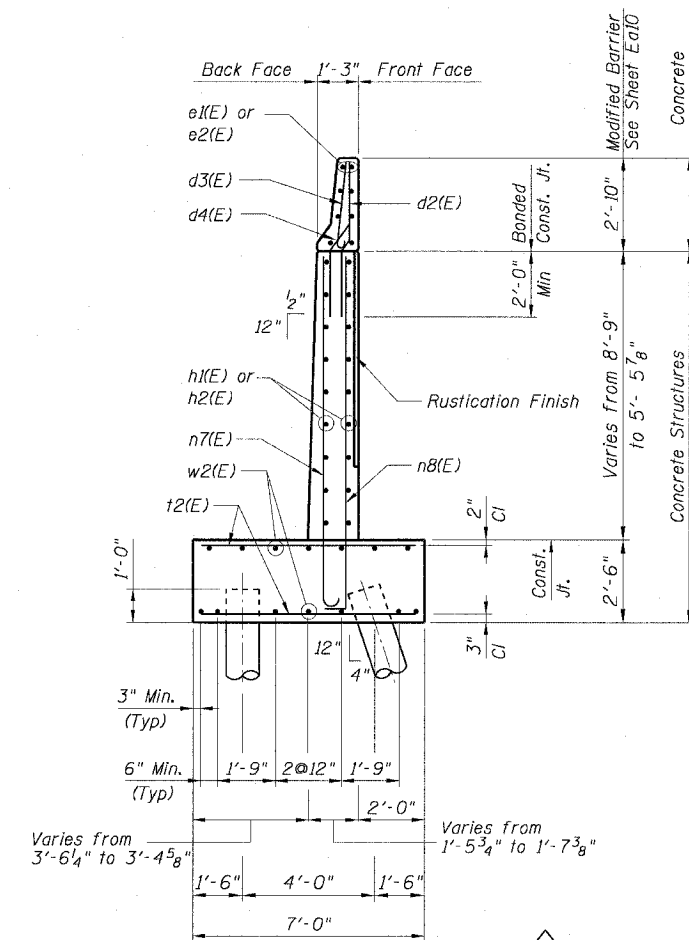


SECTION C-C

Sta. 510+65.95 to Sta. 511+40.61
Micropile Data:
No. Req'd: 26 + 1 Load Test
Design Loads:
Back Row: 30 tons vertical, 2 tons horizontal
Front Row: 30 tons vertical, 8 tons horizontal**
Design Displacement: 1/4" horizontal max.

* Transition from Fluted Parapet to Modified Barrier
Sta 510+90.82 to Sta 511+15.71

** Horizontal design load includes the horizontal component of the axial pile reaction.



SECTION D-D

Sta. 511+40.61 to Sta. 512+15.40
Micropile Data:
No. Req'd: 38 including one Proof Load Test
Design Loads:
Back Row: 30 tons vertical, 2 tons horizontal
Front Row: 30 tons vertical, 8 tons horizontal**
Design Displacement: 1/4" horizontal max.

NOTES:

- For Bar Bending Diagrams see Sheet Ea11.
- Work Sheets Ea7 to Ea8 together.
- Pile Type: Micropile
- Sub-Base for Wall Footings shall be well compacted per Standard Specifications.

MICROPILE NOTES:

- The Contractor shall submit complete computations and details to the Department for approval prior to ordering materials. (See Special Provisions).
- Steel Casing shall be Extra Strong Pipe, or equivalent.
- The Micropiles shall utilize either deformed bars or threadbars in the design of the reinforcement cross-sectional area. The reinforcement shall be sized to limit the stress to .65fpu (65% G.U.T.S.).
- Steel Casing shall not be spliced within 10 feet of the top of the Pile. Splices shall be capable of developing the full moment capacity of the Steel Casing.
- Bearing area of end of Micropile within the Footing shall be a minimum of 25 sq. in.

REVISIONS	
NAME	DATE
CG & MK	01/06/05

Sheet Ea7 of 12
ILLINOIS DEPARTMENT OF TRANSPORTATION
F.A.I. 90/94 (DAN RYAN EXPRESSWAY)
WALL SECTIONS
SOUTH WELLS STREET RETAINING WALL
WEST 63RD STREET TO WEST 62ND STREET
SECTION (2021-922PT.1-AC)
STATION 509+41.43 TO 513+00.04
COOK COUNTY SN. 016-W907
SCALE: None DRAWN BY: ET/CHD
DATE: October 29, 2004 CHECKED BY: C/JG/AJS

01/06/2005 02:46:50 PM