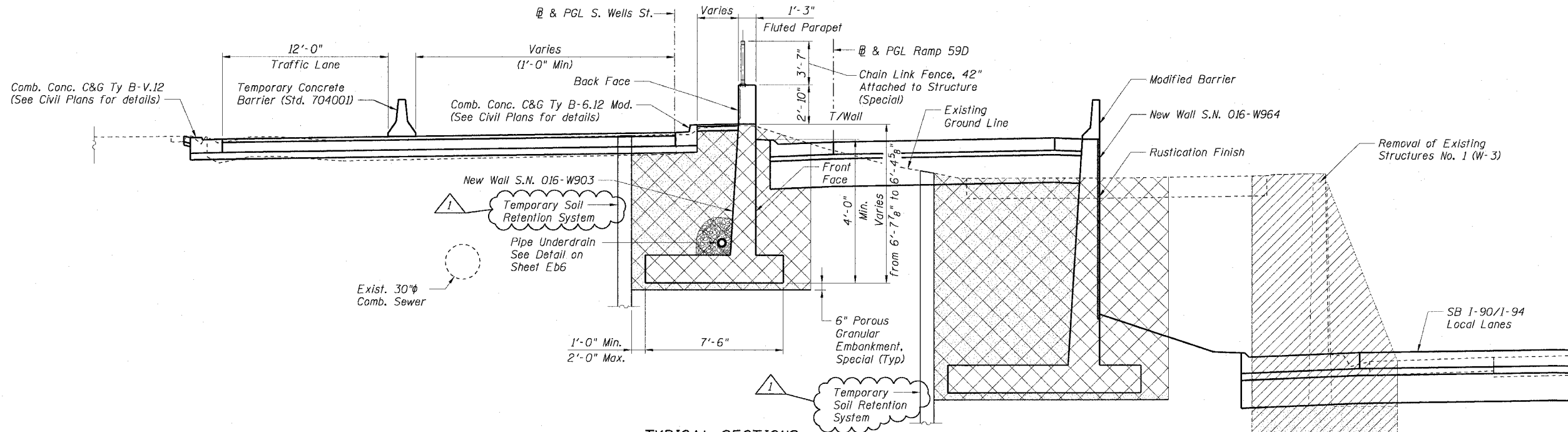


STATE OF ILLINOIS
DEPARTMENT OF TRANSPORTATION

F.A.I. RTE.	SECTION	COUNTY	TOTAL SHEETS	SHEET NO.
90/94	2021-922PT.1-AC	COOK	460	295
STA.	TO STA.			
FED. ROAD DIST. NO. 1	ILLINOIS	FED. AID PROJECT		

62693



TYPICAL SECTIONS
STA. 527+99.28 to 528+23.69

LEGEND

- Structure Excavation
- Porous Granular Embankment
- Removal of Existing Structures

Sheet Eb7 of 23

REVISIONS	
NAME	DATE
MK	01/06/05

ILLINOIS DEPARTMENT OF TRANSPORTATION
F.A.I. 90/94 (DAN RYAN EXPRESSWAY)
TYPICAL SECTIONS
SOUTH WELLS STREET RETAINING WALL
WEST 62ND STREET TO WEST 59TH STREET
SECTION 2021-922PT.1-AC
STATION 513+16.20 TO 528+23.69
COOK COUNTY SN. 016-W906-W903
SCALE: None DRAWN BY: ET/CHD
DATE: October 29, 2004 CHECKED BY: CG/MM

01/06/2005 02:48:43 PM