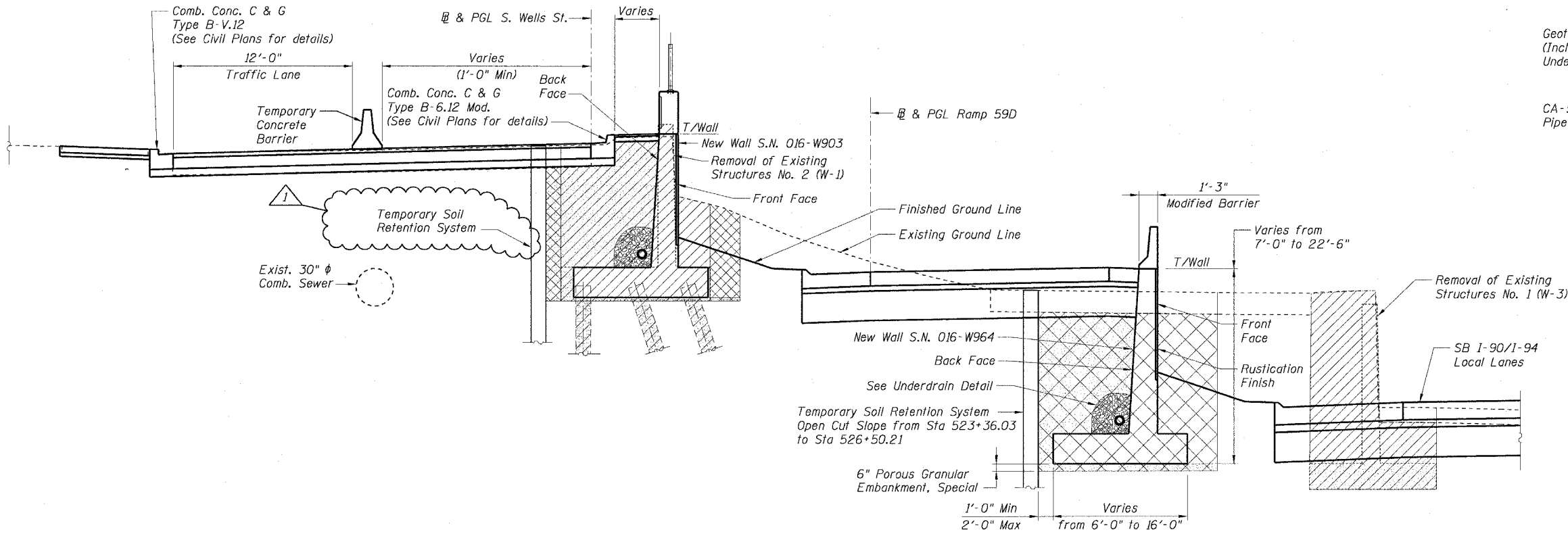


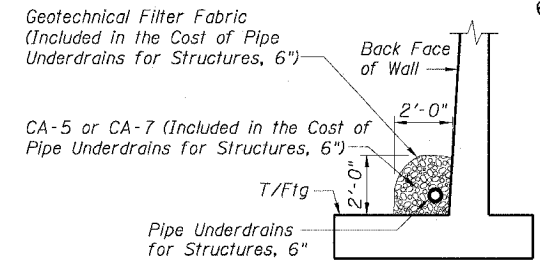
STATE OF ILLINOIS
DEPARTMENT OF TRANSPORTATION

F.A.I. RTE.	SECTION	COUNTY	TOTAL SHEETS	SHEET NO.
90/94	2021-922PT.1-AC	COOK	460	315
STA.	TO STA.			
FED. ROAD DIST. NO. 1 ILLINOIS FED. AID PROJECT				

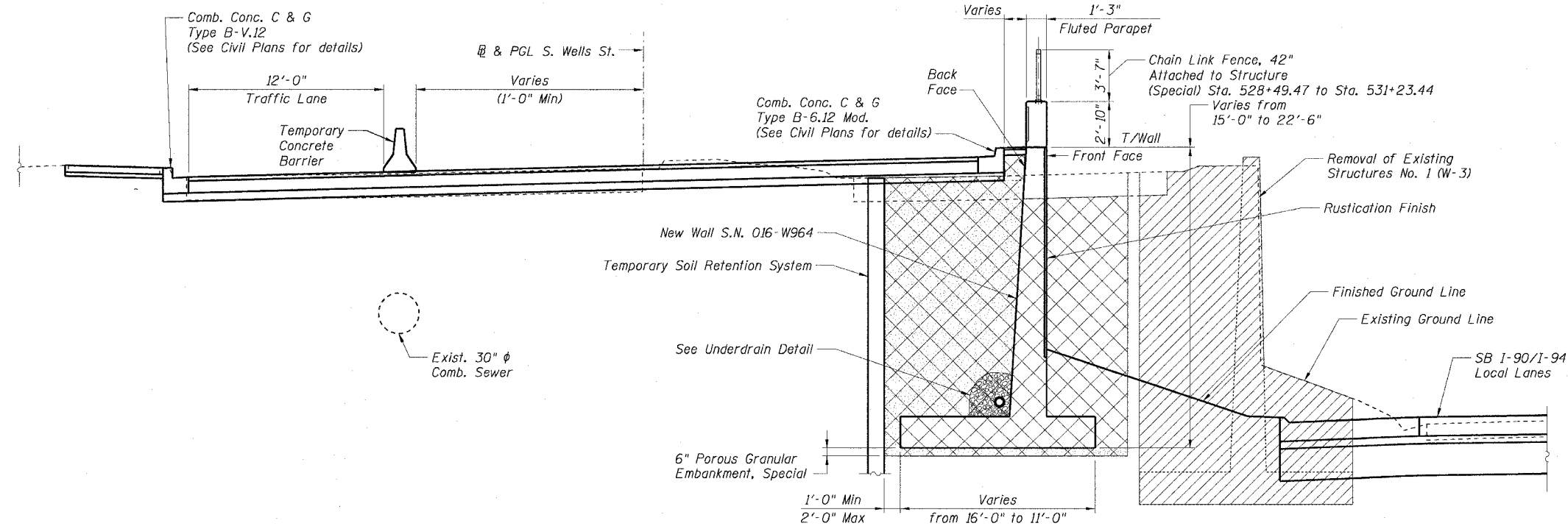
62693



TYPICAL SECTION
STA. 523+36.03 TO STA. 528+23.69
(Looking North)



TYP. UNDERDRAIN DETAIL
BEHIND RETAINING WALL



TYPICAL SECTION
STA. 528+23.69 TO STA. 531+23.44
(Looking North)

LEGEND

- Structure Excavation
- Porous Granular Embankment
- Removal of Existing Structures

NOTES:

1. For Fluted Parapet Details see Sheet Ec15.
2. For Modified Barrier Details see Sheet Ec15.
3. For Limits of Temporary Soil Retention System see Sheet Ec5.
4. For Chain Link Fence, 42" Attached to Structure (Special) Details see Sheet SD1.
5. Work Sheets Ec4 and Ec5 together.

REVISIONS	
NAME	DATE
JSS	01/06/05

Sheet Ec4 of 20
ILLINOIS DEPARTMENT OF TRANSPORTATION
F.A.I. 90/94 (DAN RYAN EXPRESSWAY)
TYPICAL SECTIONS
SOUTH WELLS ST. RETAINING WALL
WEST 61ST STREET TO WEST 59TH STREET
SECTION 2021-922PT.1-AC
STATION 523+36.03 TO STATION 533+88.42
COOK COUNTY S.N. 016-W964, 016-W894
SCALE: None DRAWN BY: CHD
DATE: October 29, 2004 CHECKED BY: CG/AJS

01/06/2005 02:48:51 PM