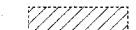




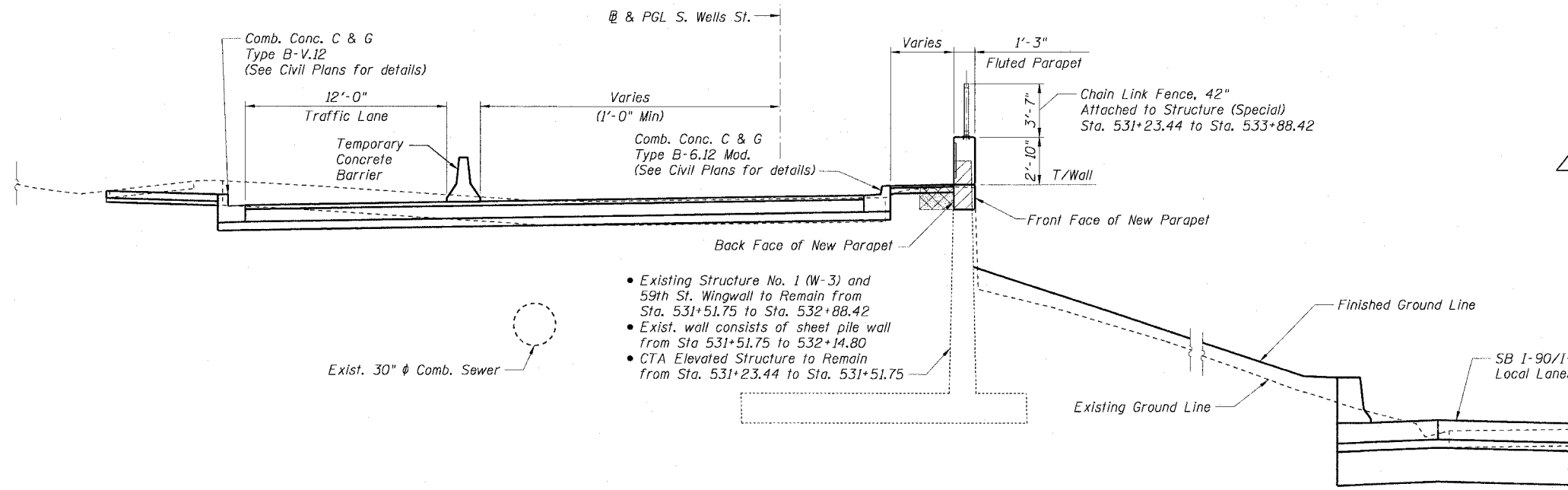
STATE OF ILLINOIS
DEPARTMENT OF TRANSPORTATION

F.A.I. RTE.	SECTION	COUNTY	TOTAL SHEETS	SHEET NO.
90/94	2021-922PT.1-AC	COOK	460	316
STA.	TO STA.			
FED. ROAD DIST. NO. 1	ILLINOIS	FED. AID PROJECT		

62693

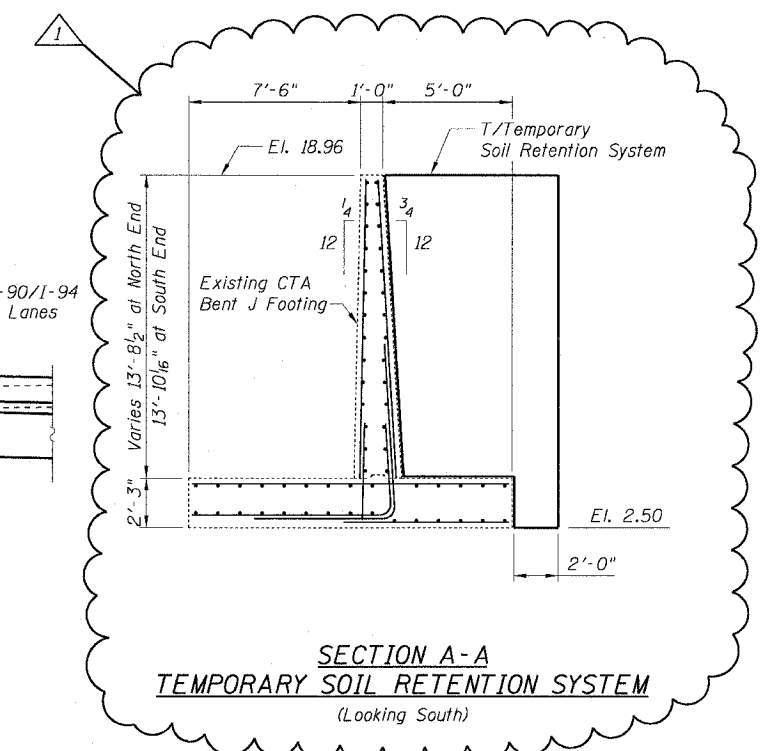
LEGEND

-  Removal of Existing Structures
-  Structure Excavation
-  Porous Granular Embankment

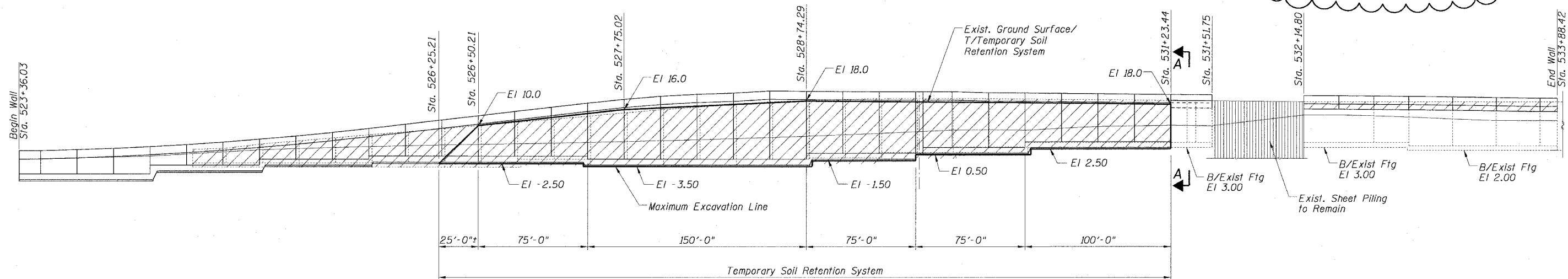


- Existing Structure No. 1 (W-3) and 59th St. Wingwall to Remain from Sta. 531+51.75 to Sta. 532+88.42
- Exist. wall consists of sheet pile wall from Sta 531+51.75 to 532+14.80
- CTA Elevated Structure to Remain from Sta. 531+23.44 to Sta. 531+51.75

TYPICAL SECTION
STA. 531+23.44 TO STA. 533+88.42
(Looking North)



SECTION A-A
TEMPORARY SOIL RETENTION SYSTEM
(Looking South)



ELEVATION
TEMPORARY SOIL RETENTION SYSTEM
(Looking West)

- NOTES FOR TEMPORARY SOIL RETENTION SYSTEM:**
1. A cantilevered sheet piling design does not appear feasible and additional members or other retention systems may be necessary. The Contractor shall submit a temporary soil retention system/temporary sheet piling design including plan details and calculations for review and acceptance by the Engineer.
 2. Impact hammers will not be allowed to install Temporary Soil Retention System.

REVISIONS	
NAME	DATE
CG & MK	01/06/05

Sheet Ec5 of 20

ILLINOIS DEPARTMENT OF TRANSPORTATION
F.A.I. 90/94 (DAN RYAN EXPRESSWAY)
TYPICAL SECTIONS
SOUTH WELLS ST. RETAINING WALL
WEST 61ST STREET TO WEST 59TH STREET
SECTION 2021-922PT.1- AC
STATION 523+36.03 TO STATION 533+88.42
COOK COUNTY S.N. 016-W964, 016-W894
SCALE: None DRAWN BY: CHD
DATE: October 29, 2004 CHECKED BY: CG/AJS

