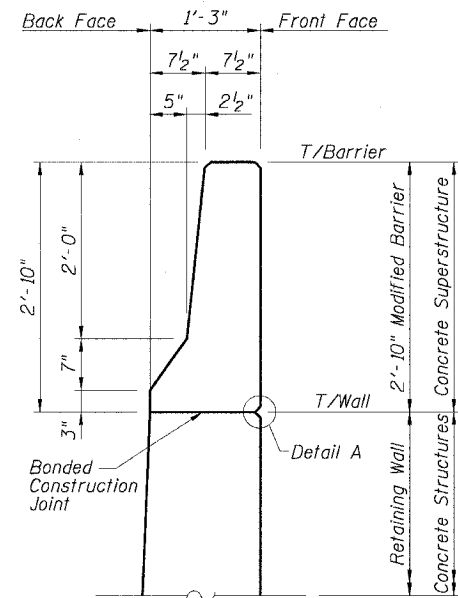


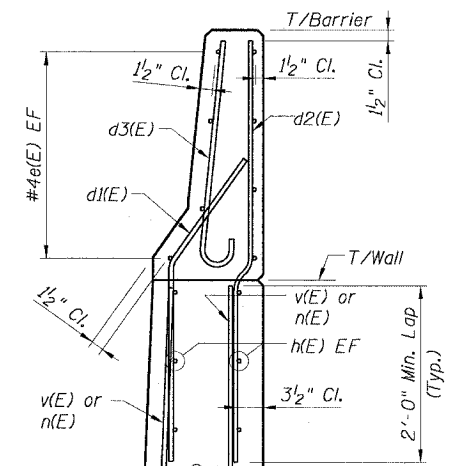
STATE OF ILLINOIS
DEPARTMENT OF TRANSPORTATION

F.A.I. SITE:	SECTION	COUNTY	TOTAL SHEETS	SHEET NO.
90/94	2021-922PT.1-AC	COOK	460	326
STA.	TO STA.			
FED. ROAD DIST. NO. 1	ILLINOIS	FED. AID PROJECT		

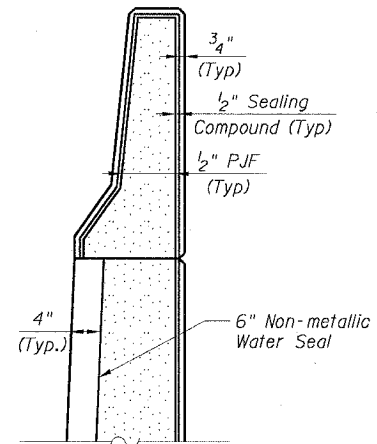
62693



DIMENSIONS

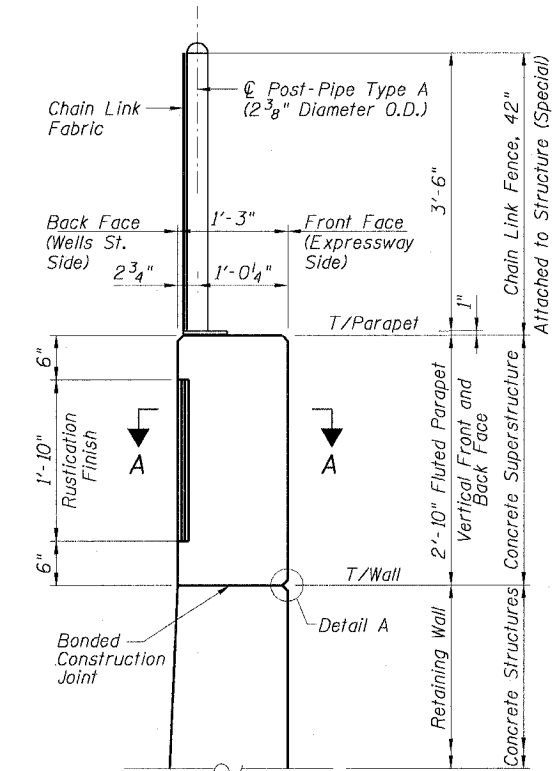


REINFORCING

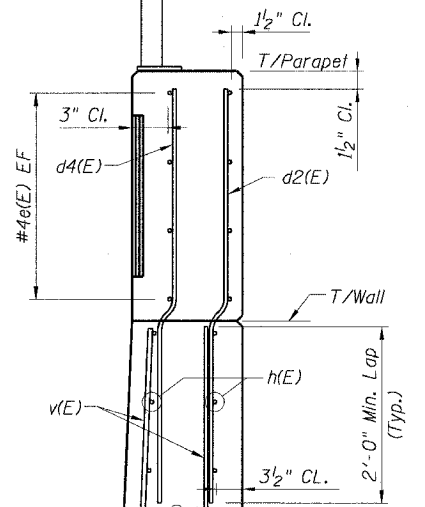


EXPANSION JOINT

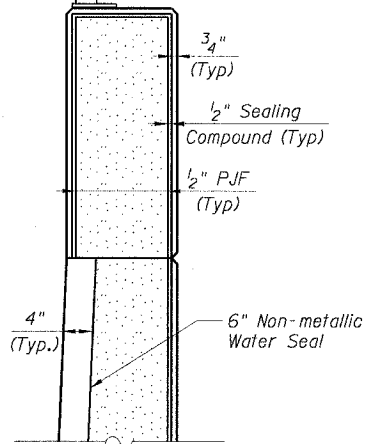
TYPICAL SECTIONS - MODIFIED BARRIER



DIMENSIONS

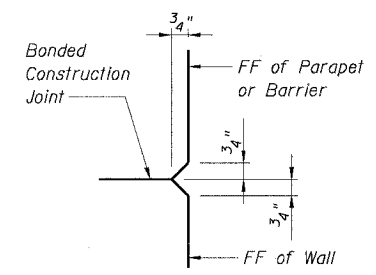


REINFORCING

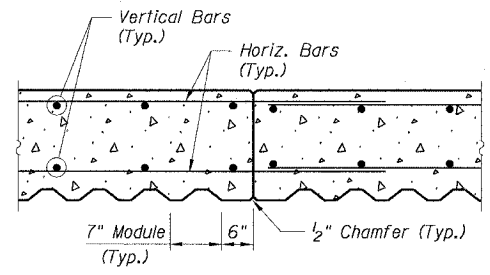


EXPANSION JOINT

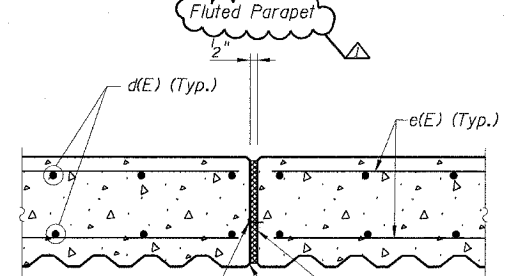
TYPICAL SECTIONS - FLUTED PARAPET



DETAIL A



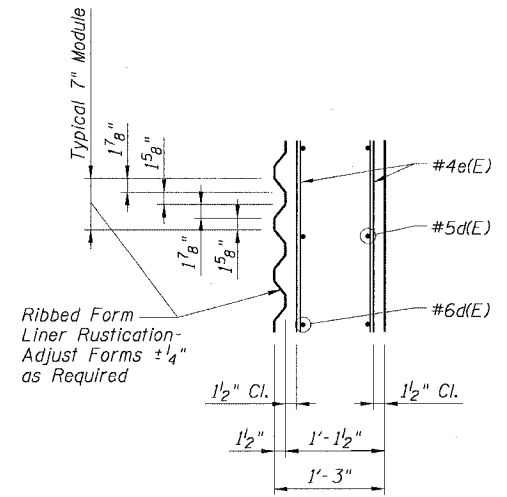
CONSTRUCTION JOINT DETAIL



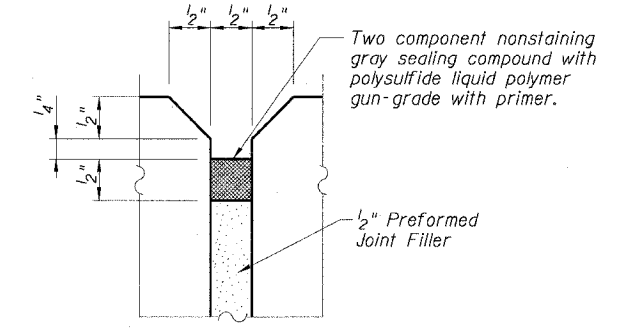
EXPANSION JOINT DETAIL

Concrete Nails Flat Head C.S.-1" Long @ 12" Cts. Vertical (Included in cost of Concrete Superstructure)

1/2" Preformed Joint Filler (Included in the Cost of Concrete Superstructure)



SECTION A-A



EXPANSION JOINT SEALING DETAIL

- NOTES:
- For Bar Bending Diagrams see Sheet Ec16
 - For Chain Link Fence, 42" Attached to Structure (Special) Detail see Sheet SD1.

REVISIONS	
NAME	DATE
CG	01/06/05

Sheet Ec15 of 20

ILLINOIS DEPARTMENT OF TRANSPORTATION
F.A.I. 90/94 (DAN RYAN EXPRESSWAY)
FLUTED PARAPET & MODIFIED BARRIER DETAILS
SOUTH WELLS ST. RETAINING WALL
WEST 61ST STREET TO WEST 59TH STREET
SECTION 2021-922PT.1-AC
STATION 523+36.03 TO STATION 533+88.42
COOK COUNTY S.N. 016-W964, 016-W894
SCALE: None DRAWN BY: GC
DATE: October 29, 2004 CHECKED BY: CG/AJS

01/06/2005 02:48:54 PM