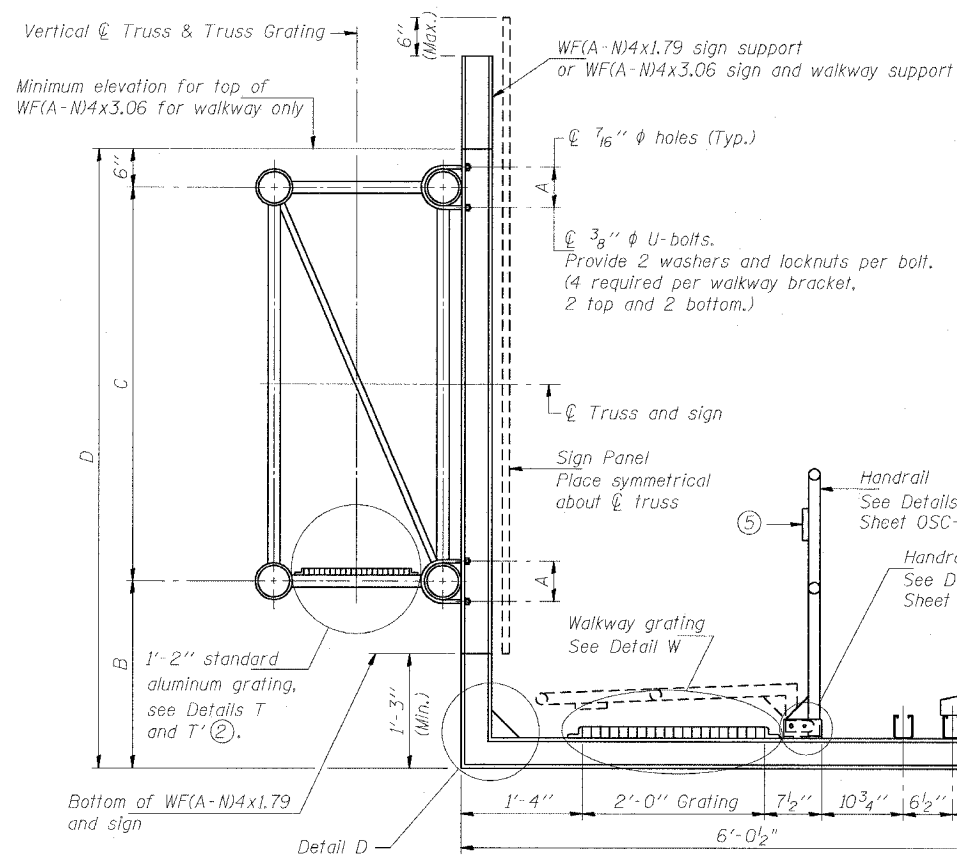
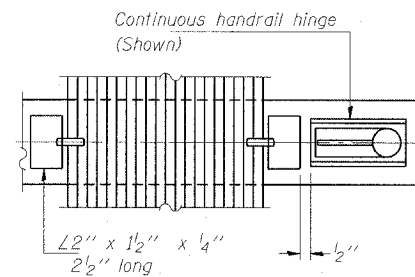


STATE OF ILLINOIS
DEPARTMENT OF TRANSPORTATION

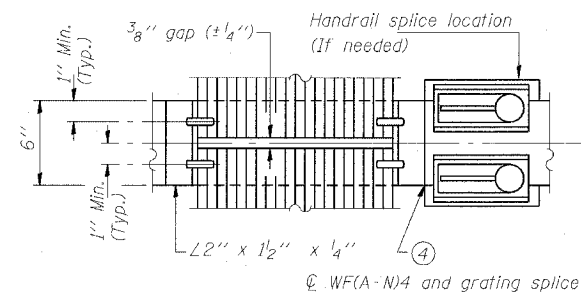
ROUTE NO.	SECTION	COUNTY	SHEET NO.	SHEET
F.A.I. RTE. 90/94		COOK	460	145
FED. ROAD DIST. NO. 1		ILLINOIS FED. AID PROJECT-		
		*2021-922PT.1-AC		
CONTRACT NO. 62693				



SECTION B-B

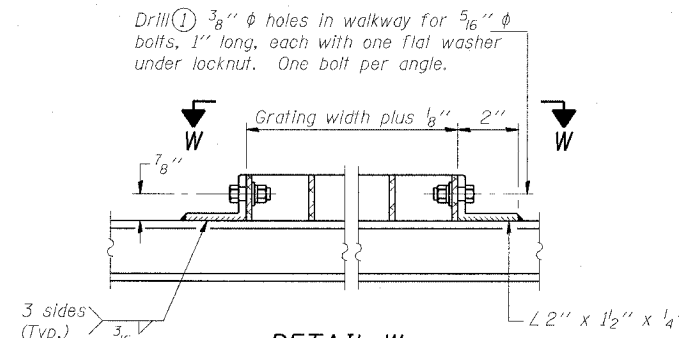


(CONTINUOUS WALKWAY GRATING)



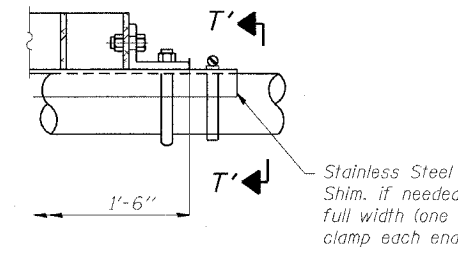
(AT WALKWAY GRATING SPLICE)

SECTION W-W



DETAIL W

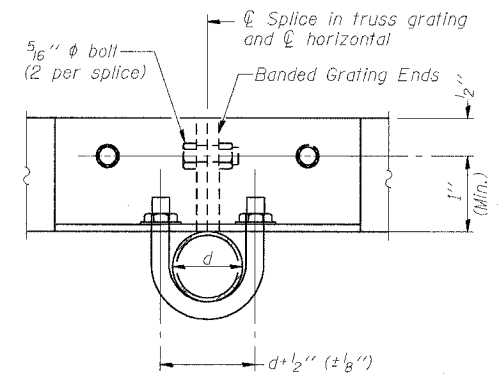
(Walkway grating)



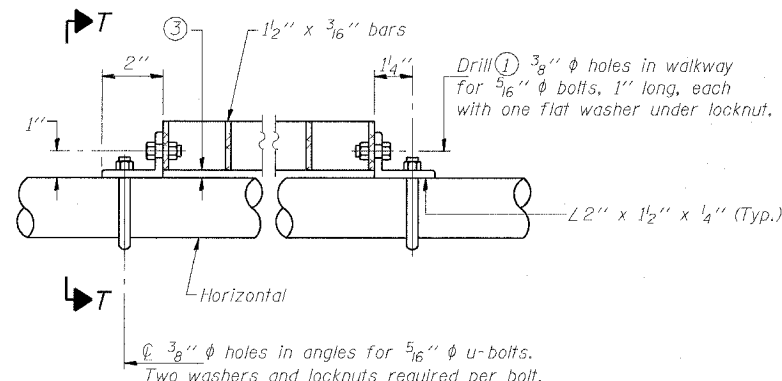
DETAIL T'

(Truss grating splice)

Details not shown same as Detail T. Alternate materials may be used subject to the Engineer's review and approval.

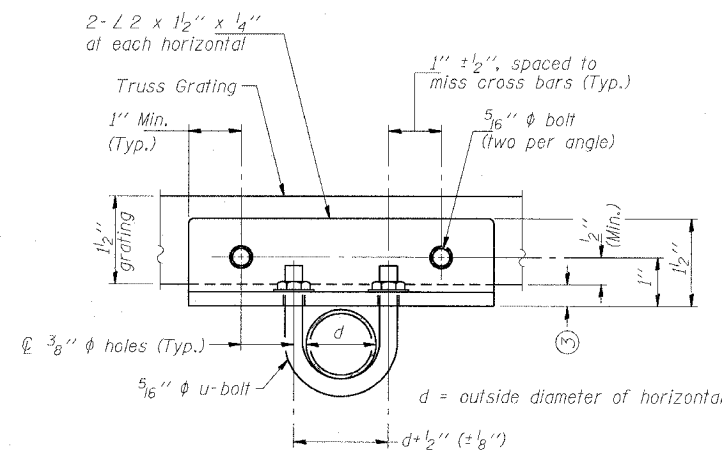


SECTION T'-T'

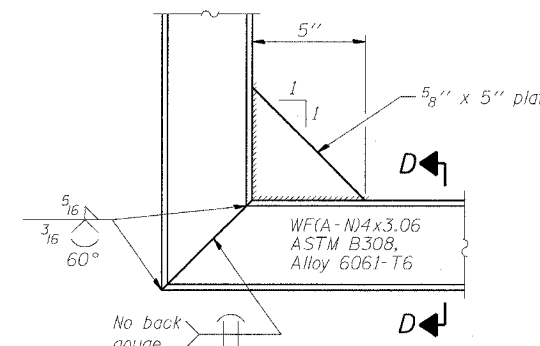


DETAIL T

(Truss grating at horizontal)

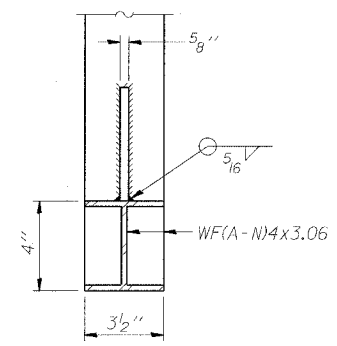


SECTION T-T



DETAIL D

(See Detail P, Base Sheet OSC-A-8.)



SECTION D-D

NUMBER	REVISION	DATE

DESIGNED - SWANG	20
CHECKED - RMG	EXAMINED
DRAWN - SWANG	PASSED
CHECKED - RMG	ENGINEER OF STRUCTURAL SERVICES
	ENGINEER OF BRIDGES AND STRUCTURES

- Drilling holes in grating may be done in shop or field, based on Contractor's preference and subject to accurate alignment.
- When truss grating must be spliced, use suggested detail or other methods subject to the Engineer's review and approval. Locate splice to avoid interference between cross bars and bolt locations.
- Tube to grating gap may vary from 0 to 1/2" (Max.) to align walkway, allow for camber, etc.
- If Handrail Joint present, weld angle to WF(A-N)4 and 1/4" extension bars. (See Base Sheet OSC-A-8)
- 1/8" x 1/2" x 2" welded to handrail posts to protect locations that contact grating.

Structure Number	Station	A	B	C	D
IC0161094L058.5	4435+00.00	7 1/2"	2'	7'	9'-6"
IC0161094R058.5	3434+50.00	7 1/2"	2'	7'	9'-6"

CANTILEVER SIGN STRUCTURES
WALKWAY DETAILS
ALUMINUM TRUSS & STEEL POST

F.A.I. 94/90 (DAN RYAN EXPRESSWAY)
63RD ST TO 59TH ST (FRONTAGE RD AND RAMPS)

11/22/2004 10:45:56 AM