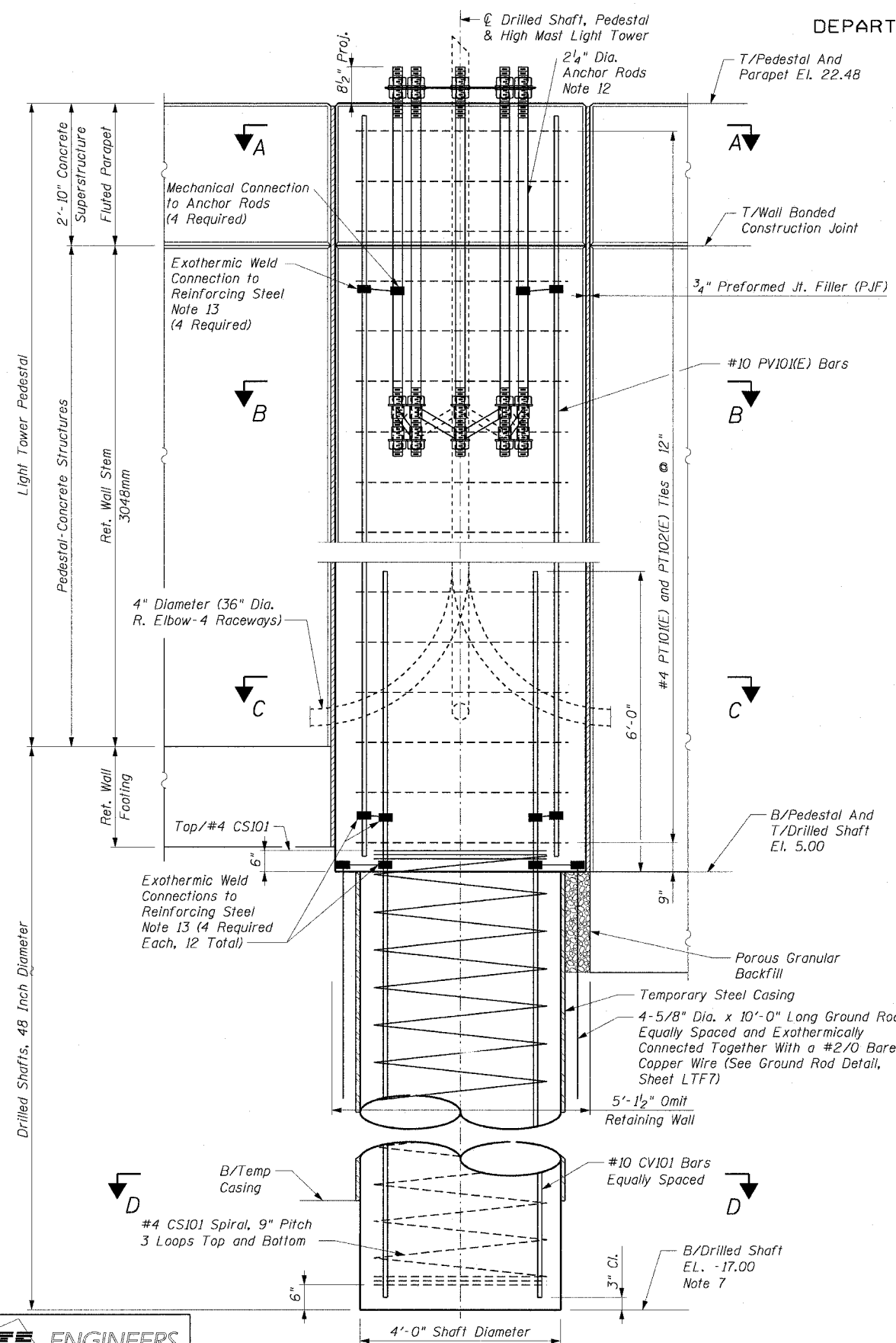
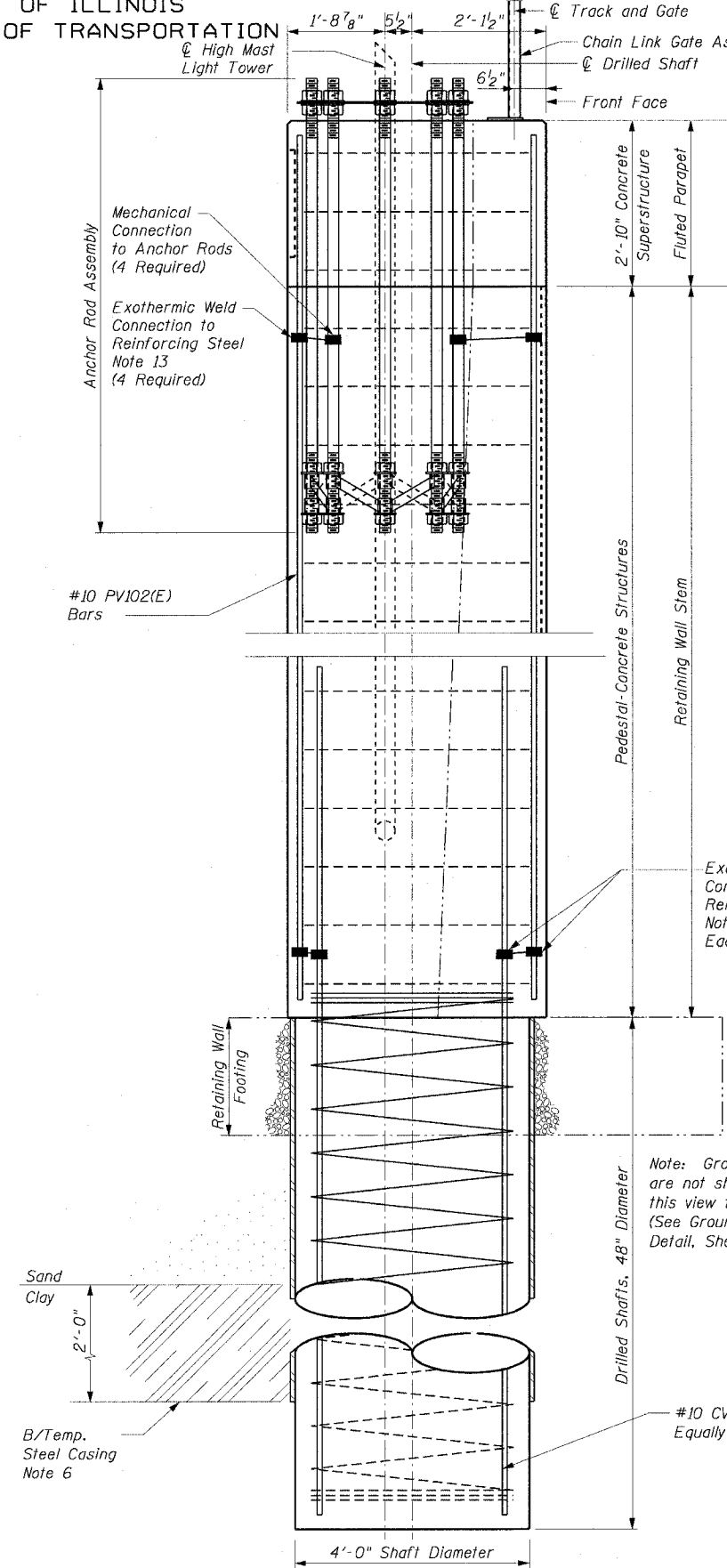


STATE OF ILLINOIS
DEPARTMENT OF TRANSPORTATION

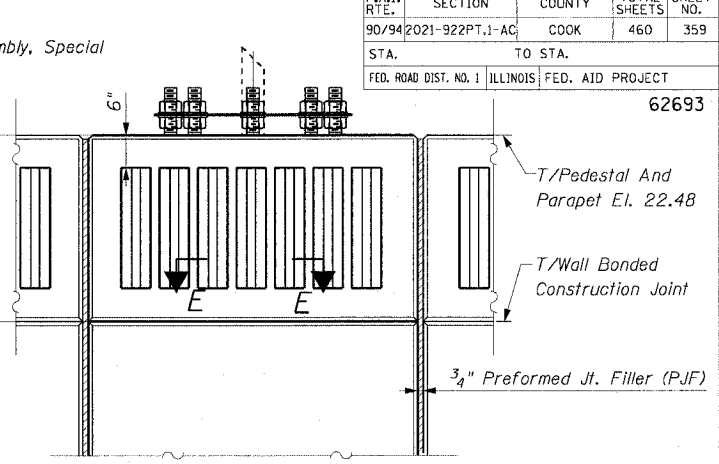
F.A.I. SECTION	COUNTY	TOTAL SHEETS	SHEET NO.
90/94 2021-922PT.1-AC	COOK	460	359
STA.	TO STA.		
FED. ROAD DIST. NO. 1	ILLINOIS	FED. AID PROJECT	62693



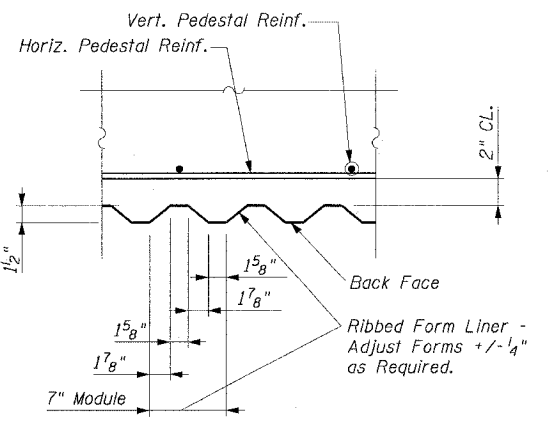
FRONT FACE - ELEVATION



SIDE - ELEVATION



BACK FACE - ELEVATION



SECTION E-E

NOTES:

- For Pedestal And Drilled Shaft Schedule See Sheet LTF1.
- For Reinforcement Details See Sht. LTF1.
- For Bill Of Material See Sht. LTF1.
- For Sections A-A, B-B, C-C And D-D See Sht. LTF7.
- All Faces Of Pedestal To Be Vertical.
- For Notes 1 Through 13 See Sheet LTF1.

Note: Ground Rods are not shown on this view for clarity. (See Ground Rod Detail, Sheet LTF7)

REVISIONS	
NAME	DATE

SHEET LTF6 of 11
ILLINOIS DEPARTMENT OF TRANSPORTATION
F.A.I. 90/94 (DAN RYAN EXPRESSWAY)
TYPICAL ELEVATIONS
HIGH MAST LIGHT TOWER 7TF2
WEST 63RD STREET TO WEST 59TH STREET
HIGH MAST LIGHT TOWER FOUNDATIONS
COOK COUNTY

SCALE: None
DATE: October 29, 2004
DRAWN BY: CD
CHECKED BY: ML