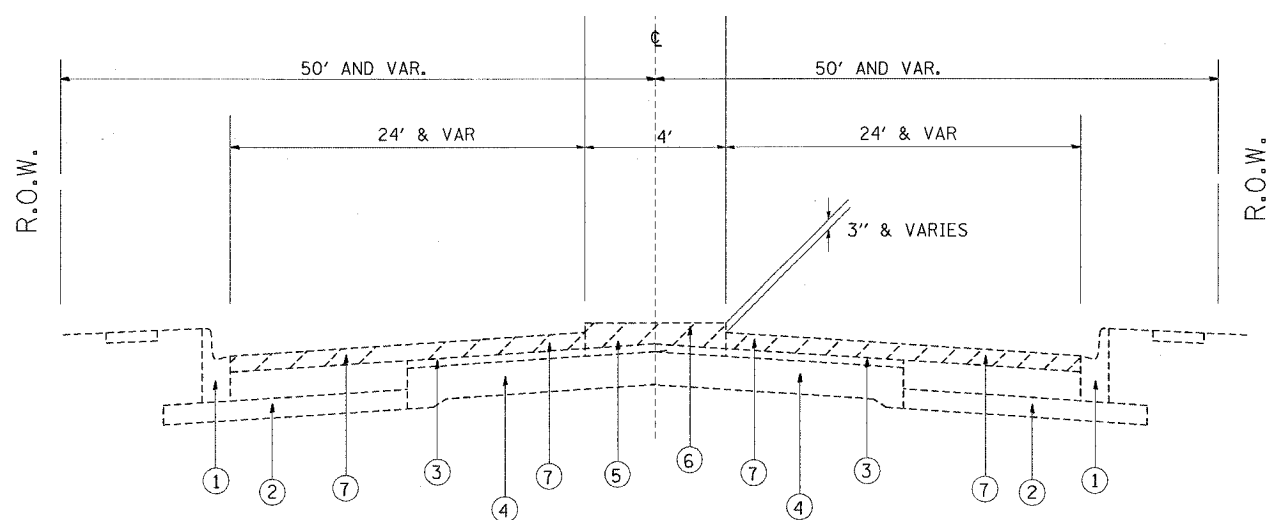


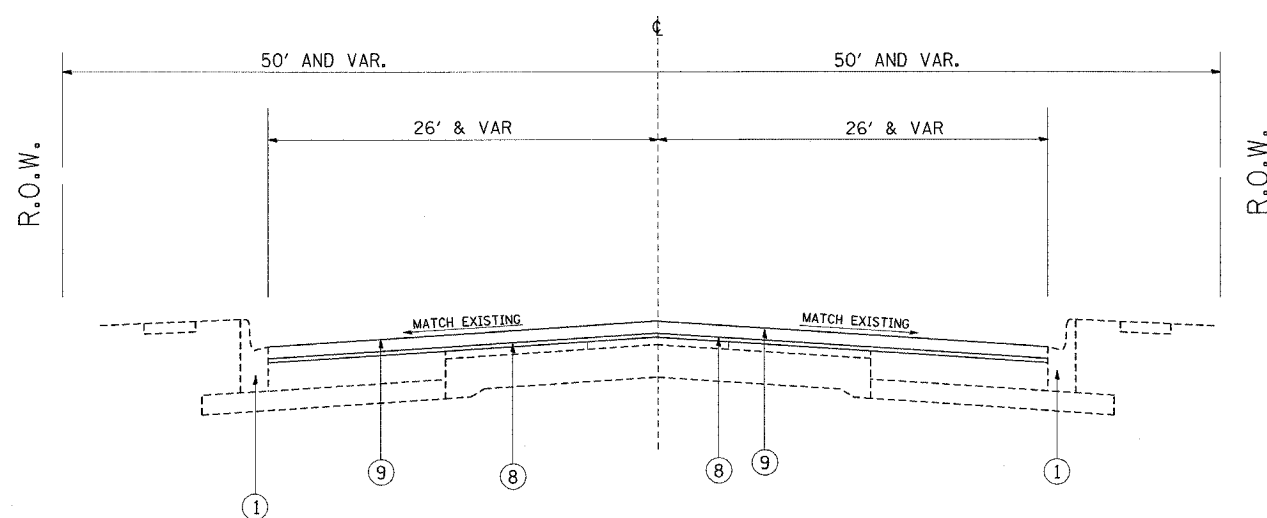
C62783



EXISTING TYPICAL SECTION

LEGEND

- ① EXIST. CONCRETE CURB AND GUTTER
- ② EXIST. SUB BASE GRANULAR MATERIAL, TYPE A, 4"
- ③ EXISTING BITUMINOUS CONCRETE SURFACE COURSE, ± 6'
- ④ EXISTING P.C.C. BASE COURSE, 9"
- ⑤ EXISTING MEDIAN
- ⑥ PROPOSED MEDIAN REMOVAL PARTIAL DEPTH
- ⑦ PROP. BITUMINOUS SURFACE REMOVAL, 2½"
- ⑧ PROPOSED POLYMERIZED LEVELING BINDER (MACHINE METHOD), SUPERPAVE, IL-4.75, N50, ¾"
- ⑨ PROPOSED POLYMERIZED BITUMINOUS CONCRETE SURFACE COURSE, SUPERPAVE, MIX "F", N90, 1¾"



31st ST
PROPOSED TYPICAL SECTION

MIXTURE REQUIREMENTS			
MIXTURE USES	AC / PG	RAP % (MAX)	DESIGN AIR VOIDS
POLYMERIZED LEVELING BINDER (MACHINE METHOD), SUPERPAVE, IL-4.75, N50	SBS/SBR PG76-28	0%	2.5% AT 50 GYRATIONS
POLYMERIZED BIT. CONC. SURFACE COURSE, SUPERPAVE, MIX "F", N90	SBS/SBR PG 70-22	0%	4% AT 90 GYRATIONS
ALL CLASS D PATCHING IL-19, 9 INCHES	PG 64-22	15%	4% AT 70 GYRATIONS
BIT. REPLACEMENT OVER PATCHES IL-19	PG 64-22	15%	4% AT 70 GYRATIONS
DESIGNER USED 112 LBS/SY/IN IN ALL CALCULATIONS " FOR SURFACE MIXES ONLY"			

REVISIONS	
NAME	DATE

ILLINOIS DEPARTMENT OF TRANSPORTATION

EXISTING & PROPOSED TYPICAL SECTIONS

SCALE: VERT. NONE
HORIZ. DATE 4-9-04

DRAWN BY FRITZ
CHECKED BY