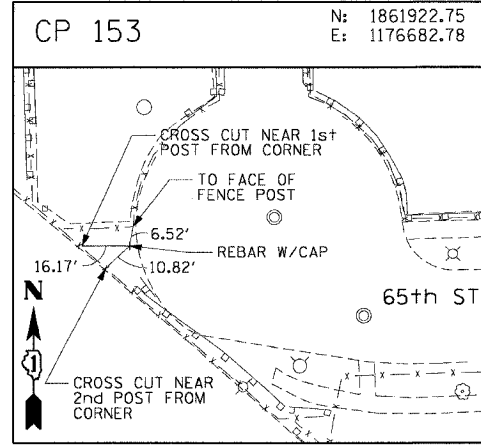
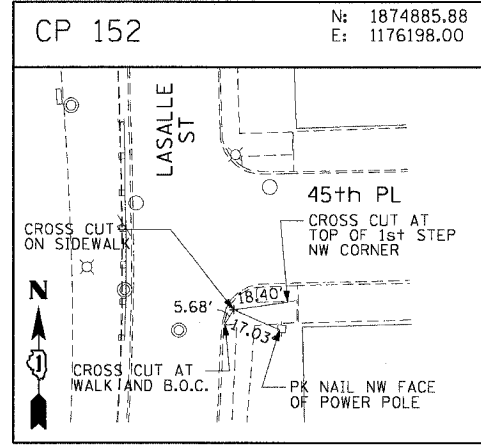
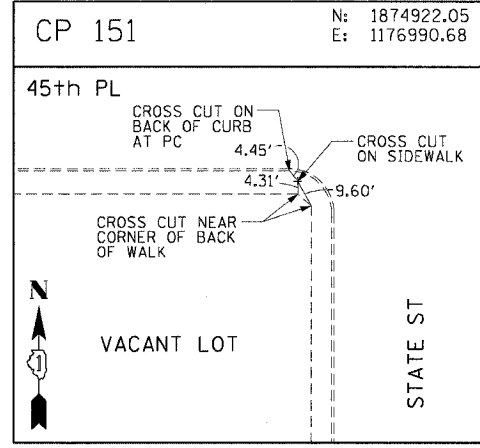
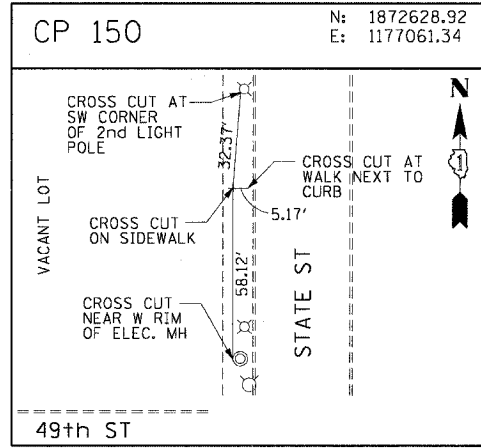
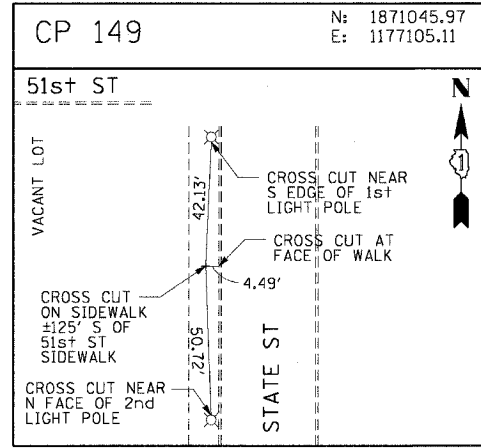
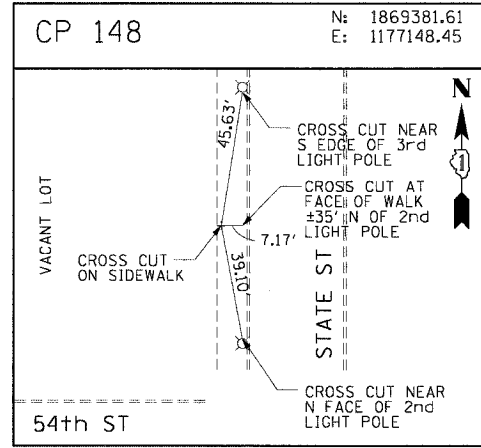
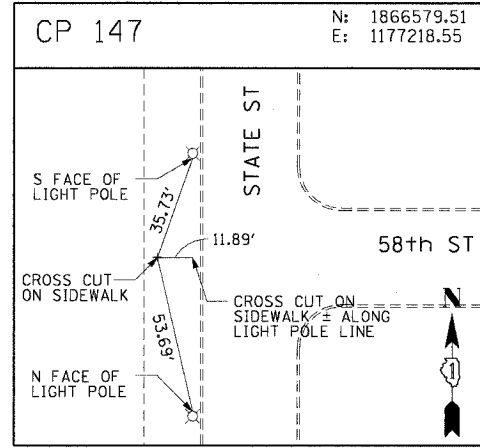
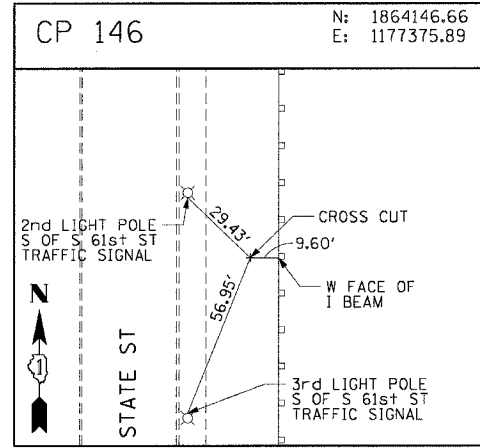
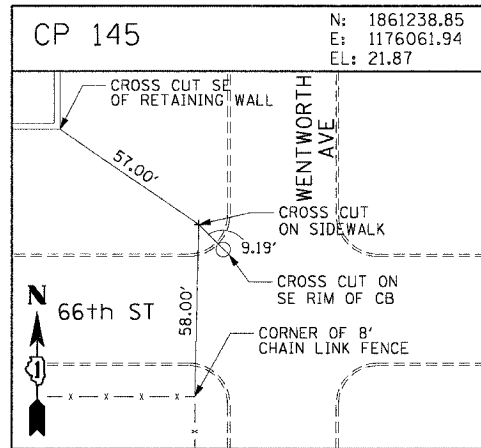
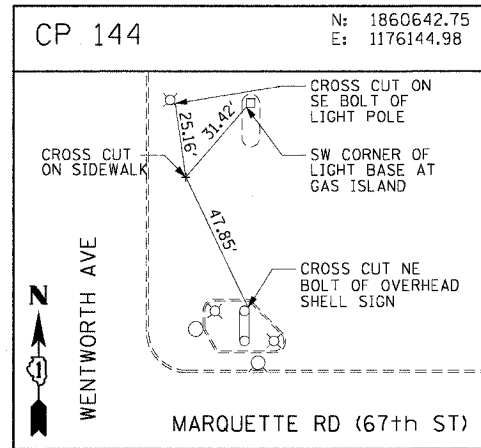
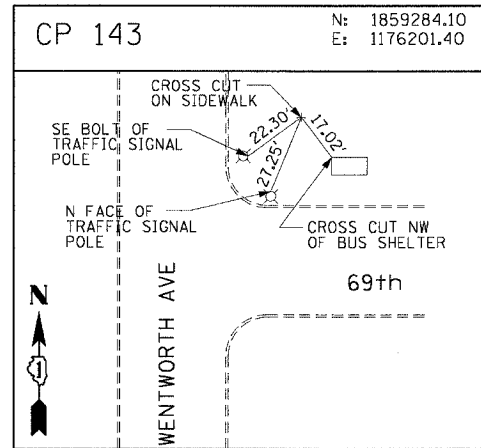
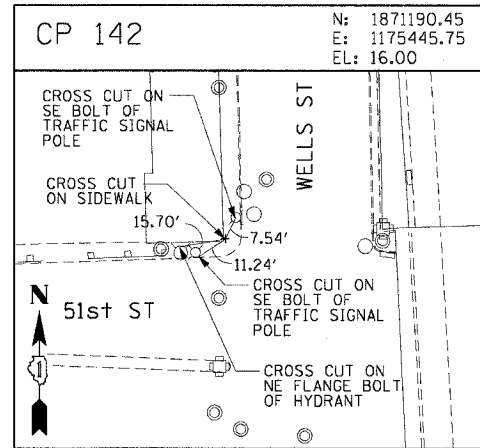
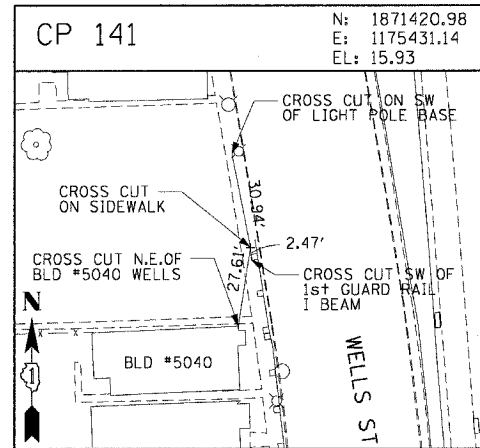
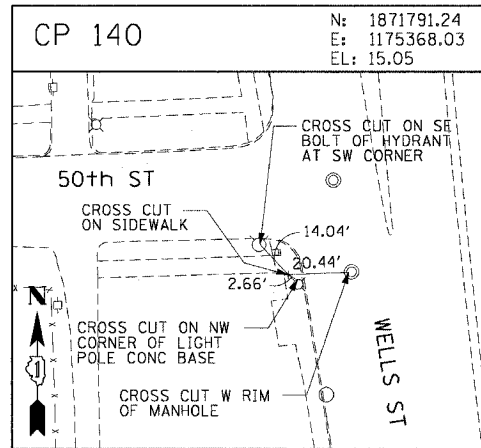
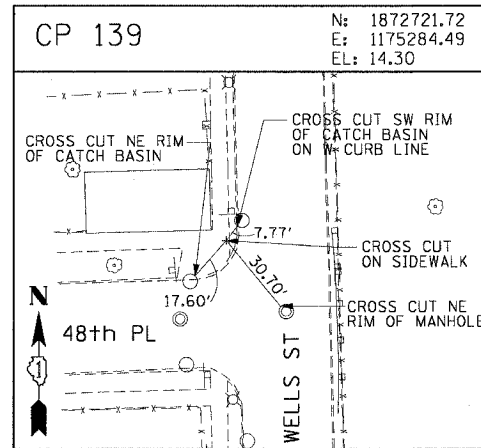
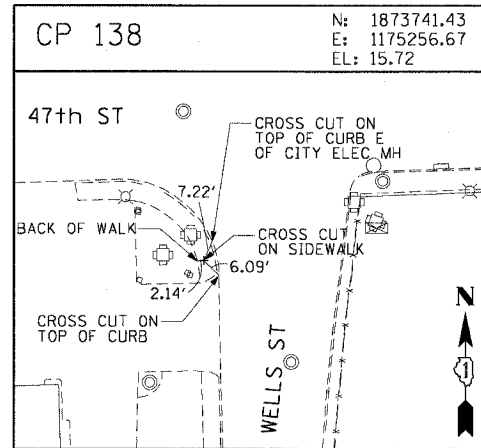
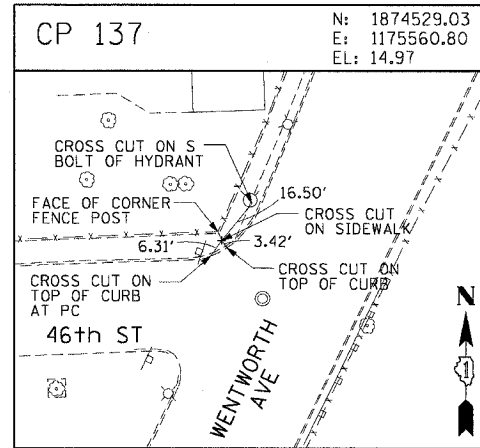
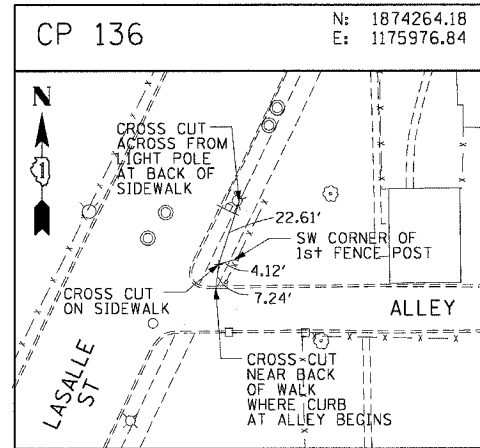


F.A.I. RTE.	SECTION	COUNTY	TOTAL SHEETS	SHEET NO.
90/94	2004-064TS	COOK	40	17
STA.	TO STA.			
FED. ROAD DIST. NO. 1 ILLINOIS FED. AID PROJECT				
62803				



REVISIONS	
NAME	DATE

ILLINOIS DEPARTMENT OF TRANSPORTATION
F.A.I. 90/94 (DAN RYAN EXPRESSWAY)
TRAFFIC SIGNALS AT 51ST STREET AND
WENTWORTH AVENUE / WELLS STREET
SURVEY TIES AND CONTROL POINTS

SCALE: 1"=30'
DATE: October 29, 2004

DRAWN BY: MRK
CHECKED BY: JAL

MAP 40468 C:\WIN4\CIT\9\WELL\CP136-153.DWG 10/25/2004 03:29:40 PM