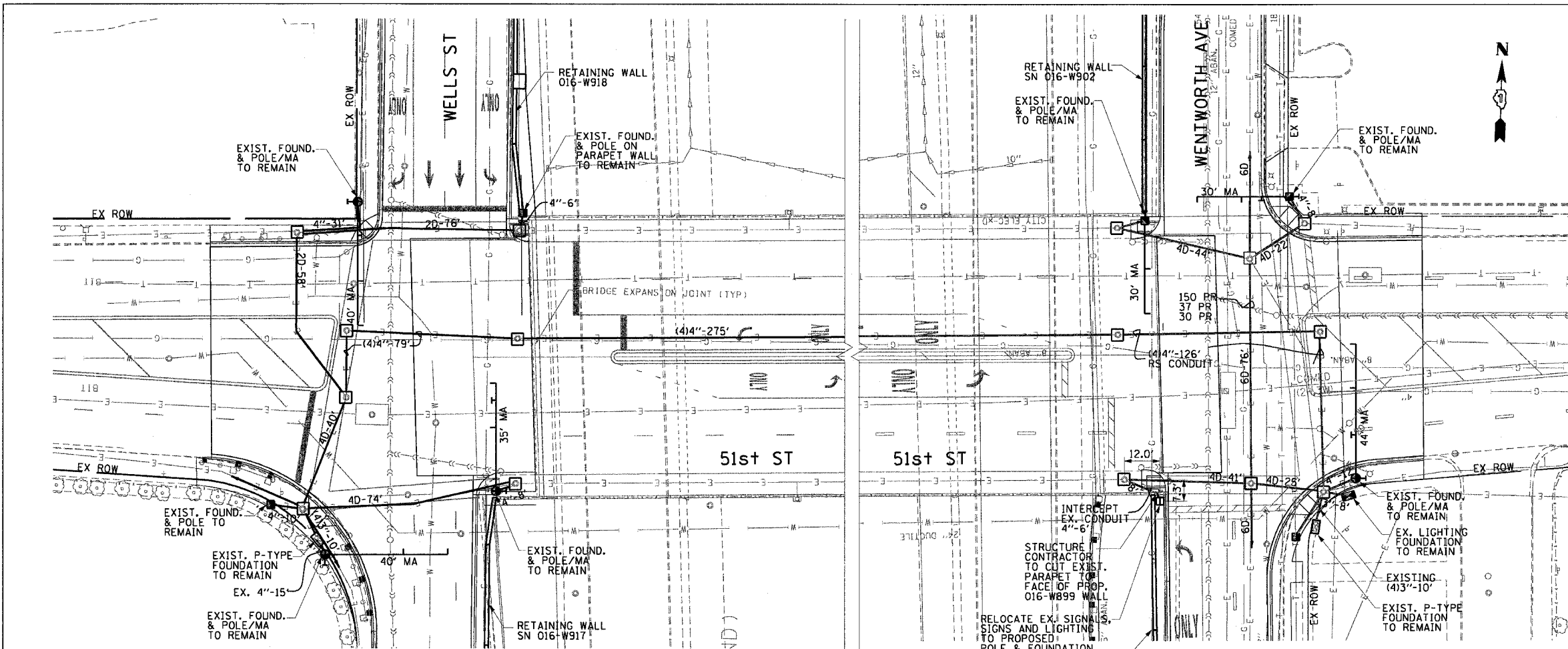


F.A.I. RTE.	SECTION	COUNTY	TOTAL SHEETS	SHEET NO.
90/94	2004-064TS	COOK	40	21
STA.	TO STA.			
FED. ROAD DIST. NO. 1 ILLINOIS FED. AID PROJECT				
62803				

CONSTRUCTION NOTES :

- THIS INTERSECTION CONTAINS EXISTING FIRE ALARM/POLICE COMMUNICATION SYSTEM THAT SHOULD REMAIN IN-PLACE. THE CONTRACTOR SHALL BE RESPONSIBLE FOR NOTIFYING THE CITY OF CHICAGO OFFICE OF EMERGENCY COMMUNICATIONS (OEC) MR. JEFF CAIRNS AT 312-746-9840 PRIOR TO THE COMMENCEMENT OF ALL WORK AND SHALL TAKE EXTREME CARE NOT TO IMPACT OR DAMAGE THE OEC FACILITIES. REQUIRED COORDINATION OF WORK WITH THE OEC SHALL BE INCLUDED IN THE CONTRACT AND NO ADDITIONAL COMPENSATION WILL BE GRANTED. ANY DAMAGE TO THE ABOVE FACILITIES SHALL BE PAID BY THE CONTRACTOR AT HIS/HER EXPENSE.
- CONTRACTOR MUST NOTIFY THE CHICAGO DEPARTMENT OF TRANSPORTATION'S BUREAU OF TRAFFIC (312)744-0330, 72 HOURS BEFORE COMMENCING CONSTRUCTION OR CHANGING TRAFFIC FLOW.
- CONTRACTOR TO CONTACT ALL UTILITIES PRIOR TO EXCAVATION FOR EXACT LOCATION OF THEIR UNDERGROUND FACILITIES.
- CONTRACTOR SHALL VERIFY THE EX. CABLE ROUTING PRIOR TO INSTALLATION OF PROP. TRAFFIC SIGNAL CABLES.
- UNLESS OTHERWISE NOTED, ALL DIMENSIONS ARE TO FACE OF CURB. A MINIMUM DISTANCE OF 3 FEET IS DESIRABLE FROM CURB FACE TO POLE/PEDESTAL CENTERLINE.
- ALL FOUNDATIONS IN SIDEWALK TO BE INSTALLED PER DRAWING #828 & #837.
- FOR STANDARD CODE SEE DRAWING #826.
- OPTICAL SPLICES AND ENCLOSURE, OPTICAL TERMINATIONS, PIGTAILS, PATCHCORDS, MULTIMODE TO SINGLE MODE CONVERTORS, FIBER PATCH PANEL, AND HARDWARE AND SOFTWARE REQUIRED AND ALL THAT NECESSARY FOR A FULLY OPERATIONAL SYSTEM AS WELL AS FUTURE CONNECTION TO A CLOSED LOOP SYSTEM, SHALL BE PAID FOR AS PART OF "CABINET WORK, SPLICING, TESTING AND MISC." ITEM
- ALL FIBER OPTIC CABLE RUNS SHALL BE CONTINUOUS FOR THE ENTIRE CORRIDOR WITH NO SPLICES EXCEPT AS APPROVED BY THE BUREAU OF ELECTRICITY.
- AT NO TIME SHALL BEND RADIUS OR CABLE TENSION EXCEED THE CABLE MANUFACTURER'S SPECIFICATIONS UNDER LOAD AND NO LOAD CONDITIONS.
- WITHIN MANHOLES, FIBER OPTIC CABLE SHALL BE WITHIN SPLIT FLEXIBLE INNER DUCT THAT IS NEATLY RACKED ON THE MANHOLE WALL.



CONDUIT AND FOUNDATION PLAN

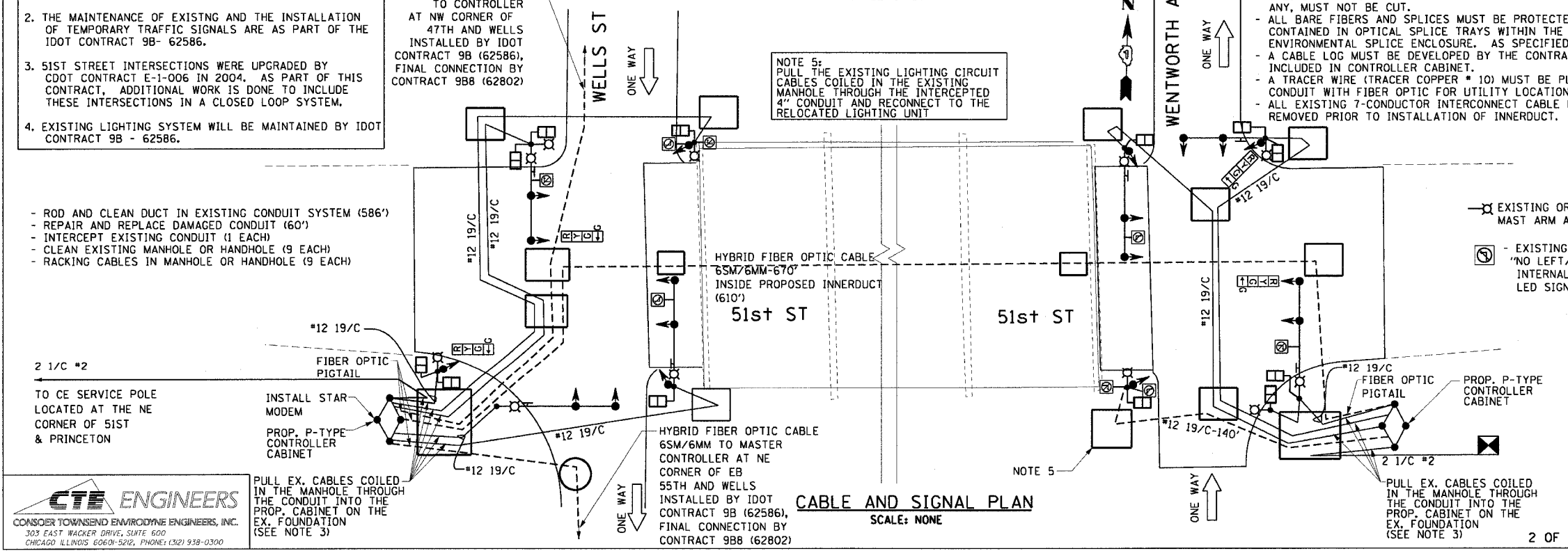
SCALE: 1"=20'

- NOTE:**
- EXCEPT FOR THE INTERCEPTING 4" CONDUIT ON THE SW CORNER OF 51ST & WENTWORTH, ALL OTHER CONDUITS ARE EXISTING TO REMAIN.
 - THE MAINTENANCE OF EXISTING AND THE INSTALLATION OF TEMPORARY TRAFFIC SIGNALS ARE AS PART OF THE IDOT CONTRACT 9B- 62586.
 - 51ST STREET INTERSECTIONS WERE UPGRADED BY CDOT CONTRACT E-1-006 IN 2004. AS PART OF THIS CONTRACT, ADDITIONAL WORK IS DONE TO INCLUDE THESE INTERSECTIONS IN A CLOSED LOOP SYSTEM.
 - EXISTING LIGHTING SYSTEM WILL BE MAINTAINED BY IDOT CONTRACT 9B - 62586.

HYBRID FIBER OPTIC CABLE 6SM/6MM TO CONTROLLER AT NW CORNER OF 47TH AND WELLS INSTALLED BY IDOT CONTRACT 9B (62586), FINAL CONNECTION BY CONTRACT 98B (62802)

NOTE 5:
PULL THE EXISTING LIGHTING CABLES COILED IN THE EXISTING MANHOLE THROUGH THE INTERCEPTED 4" CONDUIT AND RECONNECT TO THE RELOCATED LIGHTING UNIT

- ROD AND CLEAN DUCT IN EXISTING CONDUIT SYSTEM (586')
- REPAIR AND REPLACE DAMAGED CONDUIT (60')
- INTERCEPT EXISTING CONDUIT (1 EACH)
- CLEAN EXISTING MANHOLE OR HANDHOLE (9 EACH)
- RACKING CABLES IN MANHOLE OR HANDHOLE (9 EACH)



CABLE AND SIGNAL PLAN

SCALE: NONE



PULL EX. CABLES COILED IN THE MANHOLE THROUGH THE CONDUIT INTO THE PROP. CABINET ON THE EX. FOUNDATION (SEE NOTE 3)

HYBRID FIBER OPTIC CABLE 6SM/6MM-670' INSIDE PROPOSED INNERDUCT (610')

HYBRID FIBER OPTIC CABLE 6SM/6MM TO MASTER CONTROLLER AT NE CORNER OF 55TH AND WELLS INSTALLED BY IDOT CONTRACT 9B (62586), FINAL CONNECTION BY CONTRACT 98B (62802)

PULL EX. CABLES COILED IN THE MANHOLE THROUGH THE CONDUIT INTO THE PROP. CABINET ON THE EX. FOUNDATION (SEE NOTE 3)

REVISIONS	
NAME	DATE

DATE	REVISION
TRAFFIC CONTROL SIGNALS 51st ST AT WELLS ST AND WENTWORTH AVE CONDUIT, FOUNDATION AND CABLE PLAN	
CITY OF CHICAGO DEPT. OF STREETS AND SANITATION BUREAU OF ELECTRICITY DIVISION OF ELECTRICAL ENGINEERING	
DRAFTSMAN:	CHIEF DRAFTSMAN: ENGINEER:
SUPERVISING ENGINEER:	ELEC. DESIGN ENGR.
ENGINEER OF ELECTRICITY:	DWG. NO.
GEN'L SUPT. OF ELECTRICITY:	14419
DEPUTY COMMISSIONER:	
SIZE: 22" X 36"	SCALE: AS NOTED
	October 29, 2004

ILLINOIS DEPARTMENT OF TRANSPORTATION F.A.I. 90/94 (DAN RYAN EXPRESSWAY) TRAFFIC SIGNALS AT 51ST STREET AND WENTWORTH AVENUE / WELLS STREET TRAFFIC CONTROL SIGNALS 51st ST AT WELLS ST AND WENTWORTH AVE	
SCALE: AS SHOWN	DRAWN BY: MRK/NJH
DATE: October 29, 2004	CHECKED BY: MS