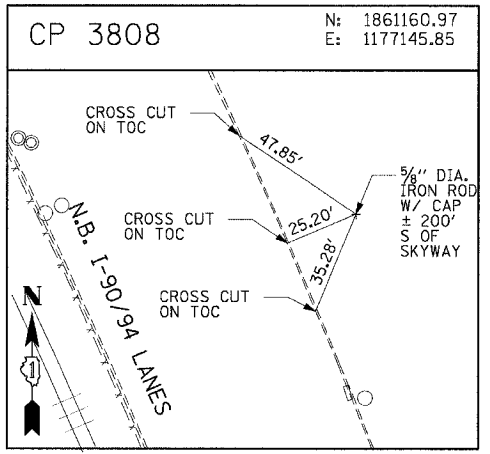
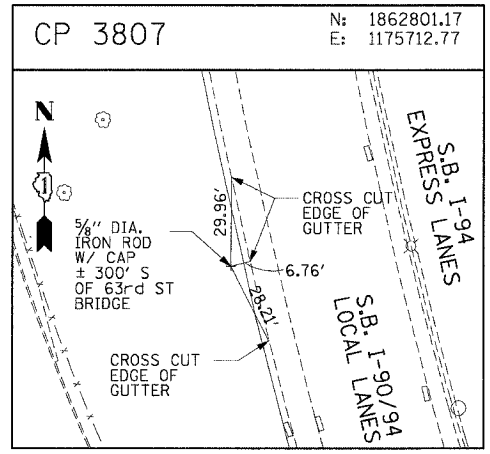
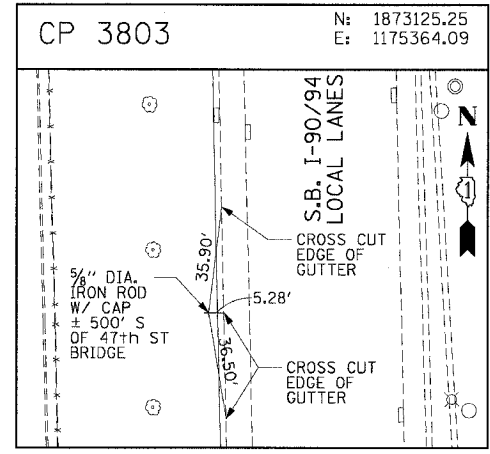
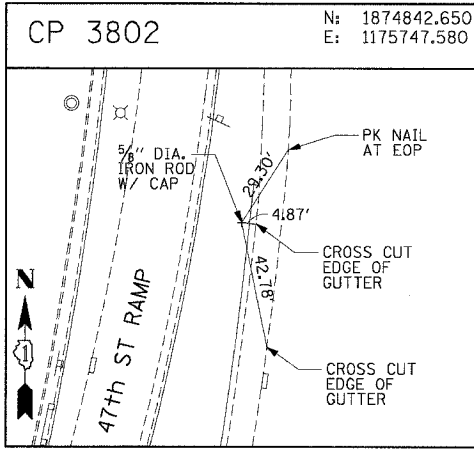
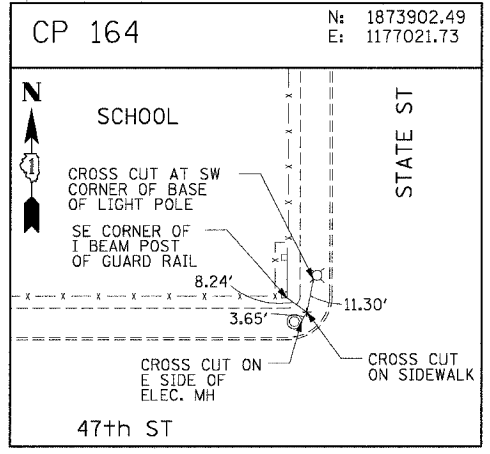
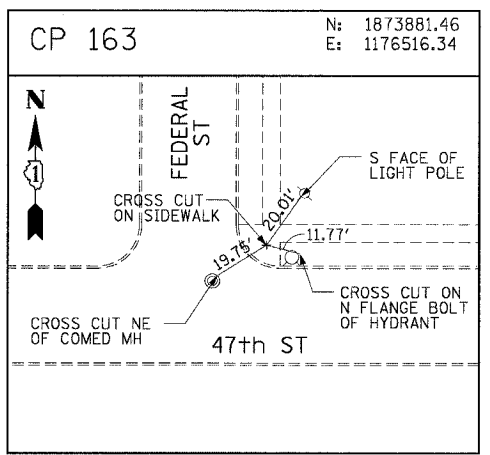
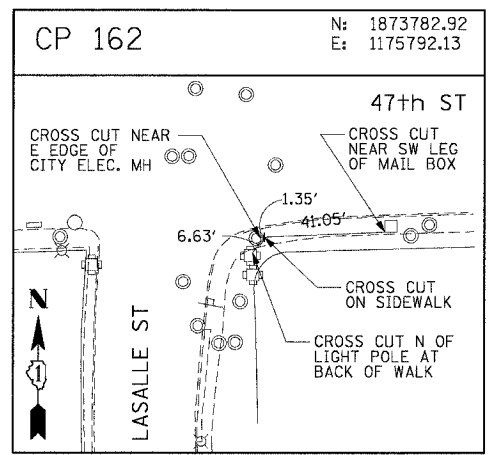
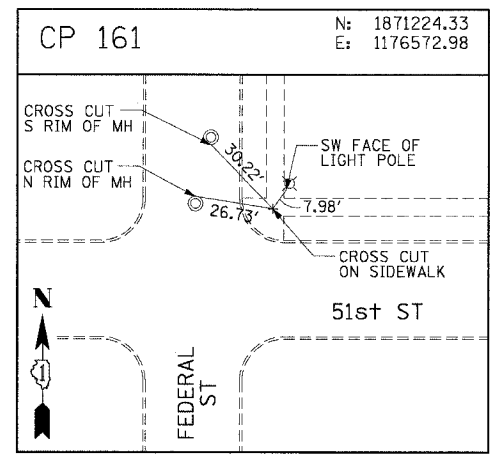
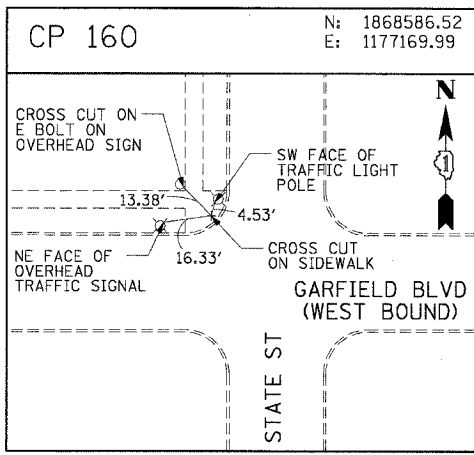
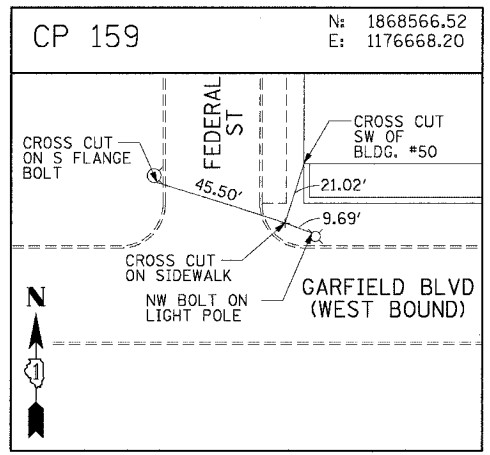
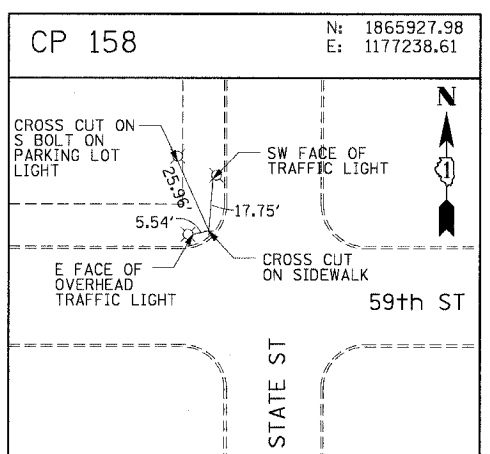
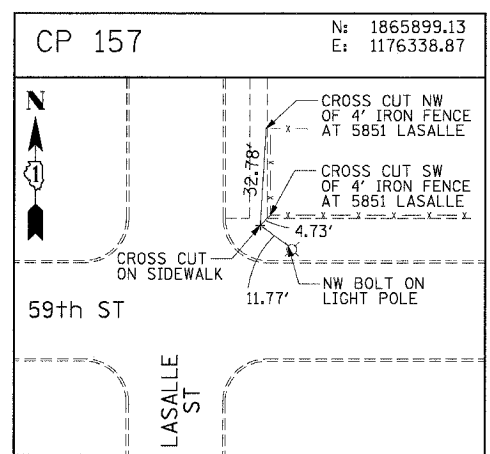
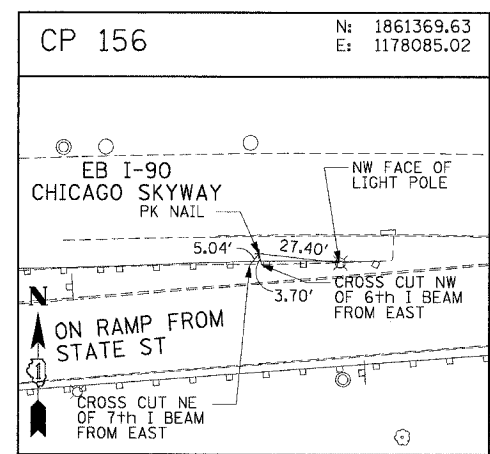
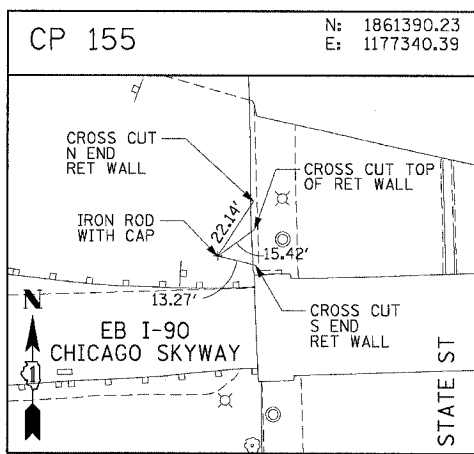
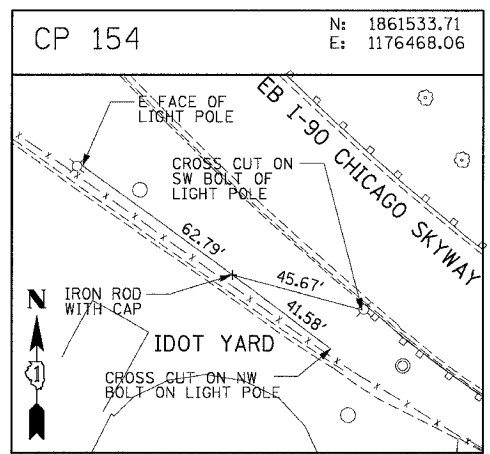


|                       |            |                           |              |           |
|-----------------------|------------|---------------------------|--------------|-----------|
| F.A.I. RTE.           | SECTION    | COUNTY                    | TOTAL SHEETS | SHEET NO. |
| 90/94                 | 2004-075R5 | COOK                      | 65           | 23        |
| STA.                  |            | TO STA.                   |              |           |
| FED. ROAD DIST. NO. 1 |            | ILLINOIS FED. AID PROJECT |              |           |
| 62814                 |            |                           |              |           |



| REVISIONS |      |
|-----------|------|
| NAME      | DATE |
|           |      |
|           |      |
|           |      |
|           |      |
|           |      |
|           |      |
|           |      |
|           |      |
|           |      |
|           |      |

ILLINOIS DEPARTMENT OF TRANSPORTATION  
 F.A.I. 90/94 (DAN RYAN EXPRESSWAY)  
 59th ST TO 57th ST (WENTWORTH AVENUE)  
 SURVEY TIES AND CONTROL POINTS

SCALE: 1"=30'  
 DATE: OCTOBER 29, 2004

DRAWN BY: MRK  
 CHECKED BY: JAL



m:\p40465\ch\1\4-ctrl\9020-sh\align\mca1902010292517

10/27/2004 08:46:32 AM