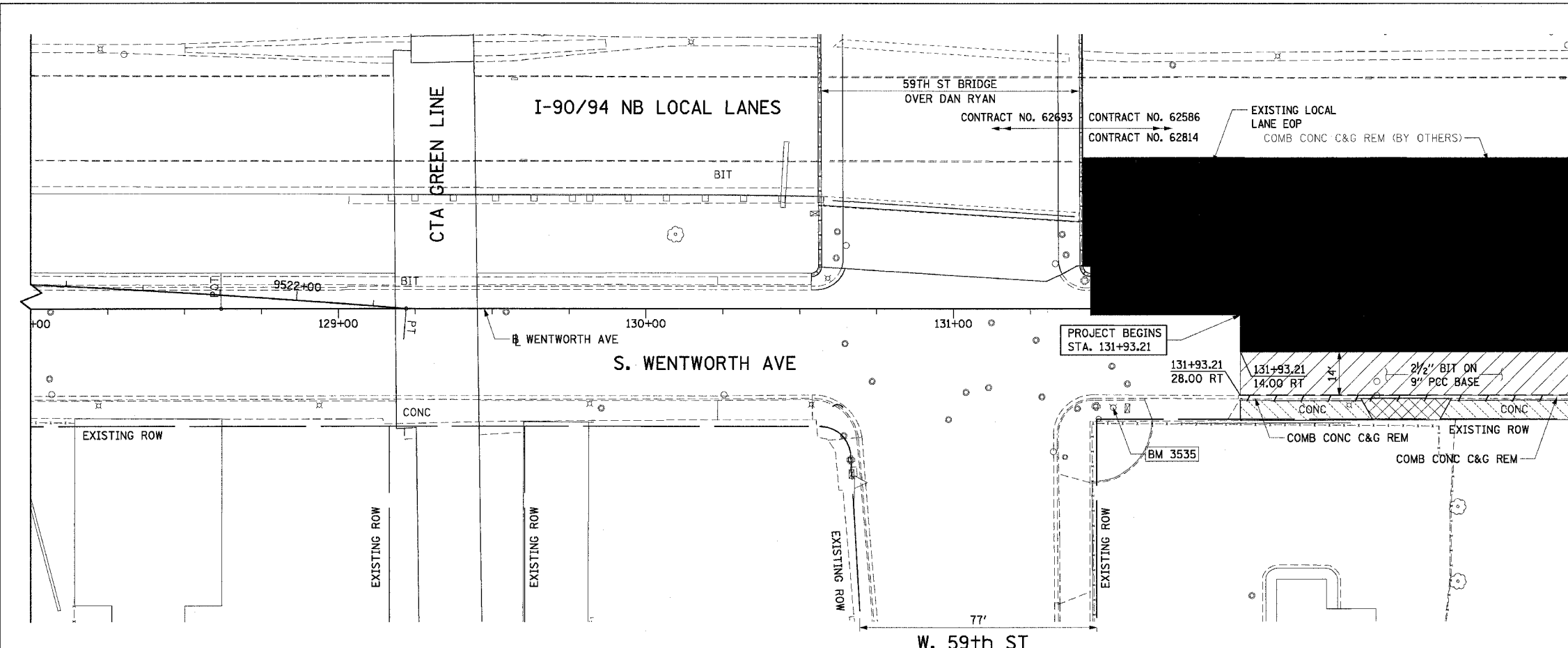


F.A.I. RTE.	SECTION	COUNTY	TOTAL SHEETS	SHEET NO.
90/94	2004-075RS	COOK	65	24
STA. 128+00		TO STA. 133+00		
FED. ROAD DIST. NO. 1 ILLINOIS FED. AID PROJECT				

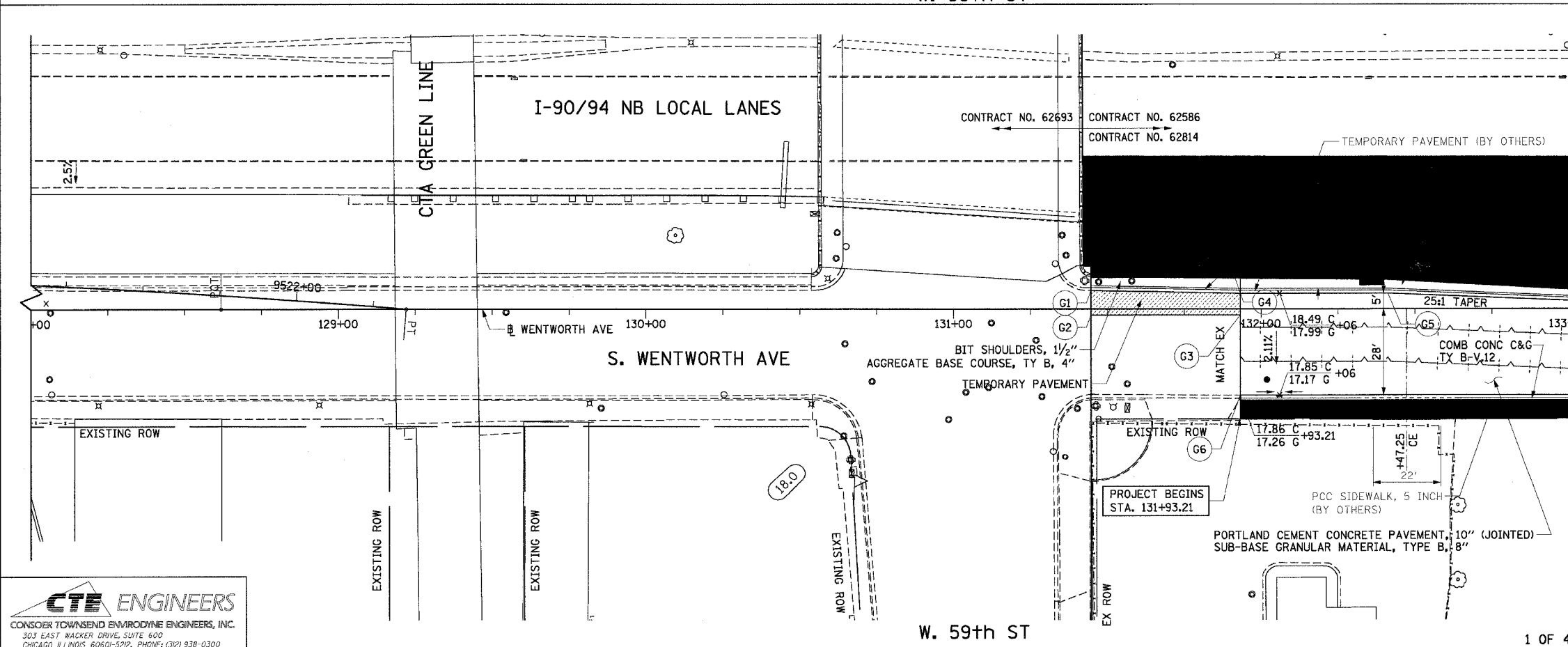
62814



- LEGEND:**
- PAVEMENT REMOVAL
 - LINEAR REMOVALS
 - SIDEWALK REMOVAL
 - DRIVEWAY PAVEMENT REMOVAL
 - PAVED SHOULDER REMOVAL (BY OTHERS)
 - WORK TO BE DONE BY OTHERS

- NOTES:**
1. CONTRACTOR SHALL COORDINATE WITH CONTRACT 62807 FOR ROADWAY LIGHTING REMOVALS AND INSTALLATIONS.
 2. SEE DRAINAGE AND UTILITY SHEETS FOR REMOVALS AND IMPROVEMENTS.
 3. CONTRACTOR SHALL COORDINATE WITH CONTRACT 62798 FOR FRONTAGE ROAD SIGNING.
 4. ALL DRIVEWAYS SHOWN ARE CONCRETE UNLESS NOTED OTHERWISE.

EXISTING CONDITIONS AND REMOVAL



- LEGEND:**
- TEMPORARY PAVEMENT
 - WORK TO BE DONE BY OTHERS

- NOTES:**
1. SEE ALIGNMENT PLANS FOR CURVE DATA.
 2. SEE ROADWAY DETAIL SHEETS FOR CONCRETE MEDIAN SURFACE, 5" (MODIFIED) AND TEMPORARY PAVEMENT DETAIL.
 3. CONTRACTOR SHALL COORDINATE WITH CONTRACT 62796 FOR SIDEWALK AND DRIVEWAY IMPROVEMENTS.
 4. CONTRACTOR SHALL COORDINATE WITH CONTRACT 62586 AND CONTRACT 62693 FOR RETAINING WALL AND FRONTAGE ROAD IMPROVEMENTS.

PT.	STATION	OFFSET
G1	131+44.62	5.94' LT
G2	131+44.62	2.00' RT
G3	131+93.21	2.00' RT
G4	131+93.21	5.00' LT
G5	132+41.22	5.00' LT
G6	131+93.21	28.00' RT

REVISIONS	
NAME	DATE

ILLINOIS DEPARTMENT OF TRANSPORTATION
 F.A.I. 90/94 (DAN RYAN EXPRESSWAY)
 59th ST TO 57th ST (WENTWORTH AVENUE)

**EXISTING AND PROPOSED ROADWAY PLANS
 WENTWORTH AVENUE**

SCALE: 1"=20'
 DATE: OCTOBER 29, 2004

DRAWN BY: AMM
 CHECKED BY: JAL

m:\p\0466\civ\1\4\cont\9\add_cmt\9\20\59th\roadway_plans\9520\012a.dwg

10/26/2004 04:25:20 FM