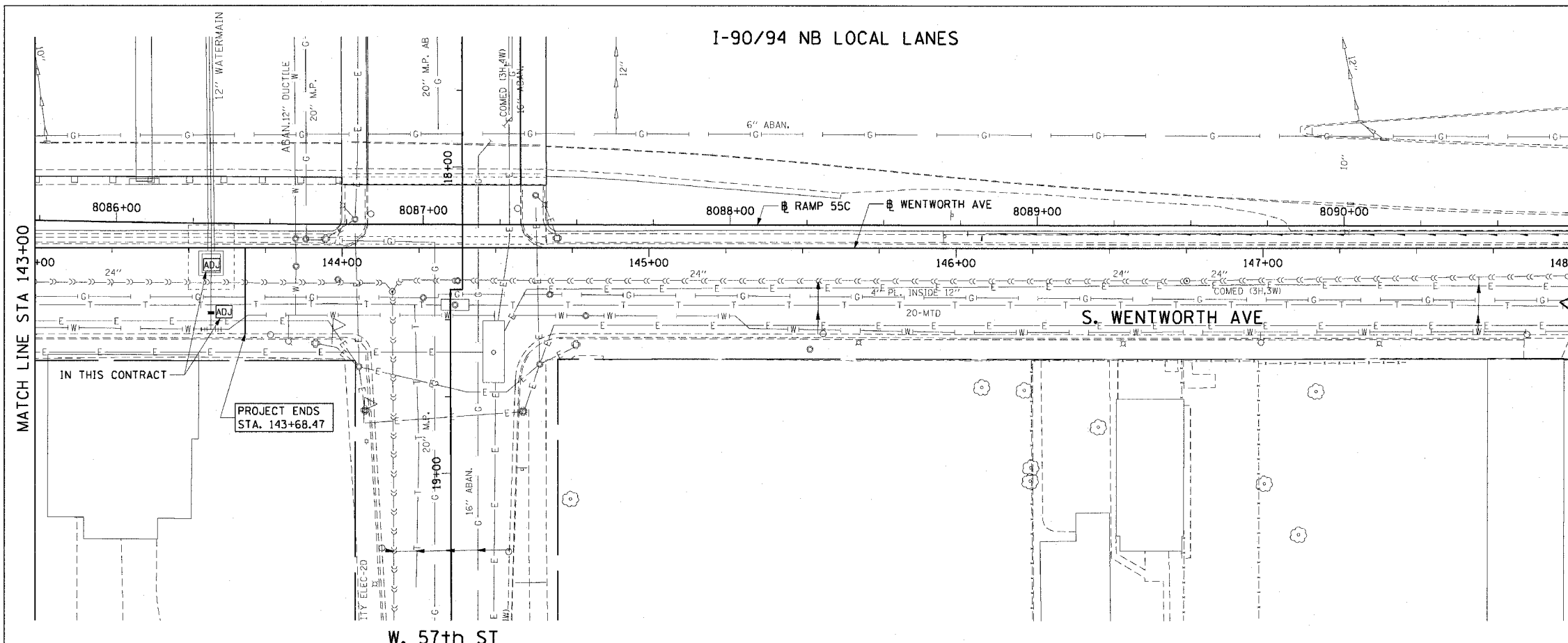
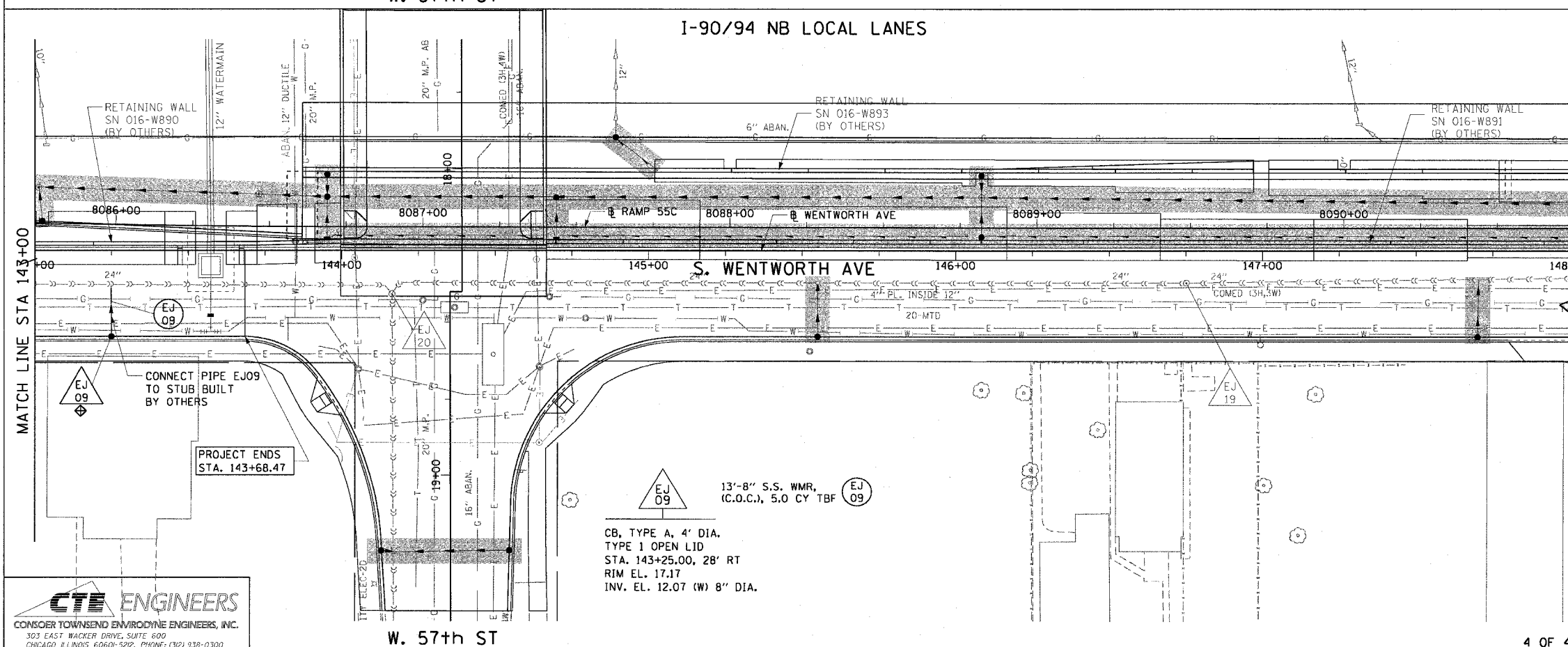


F.A.I. RTE.	SECTION	COUNTY	TOTAL SHEETS	SHEET NO.
90/94	2004-075RS	COOK	65	34
STA. 143+00		TO STA. 148+00		
FED. ROAD DIST. NO. 1 ILLINOIS FED. AID PROJECT				
62814				



- LEGEND: EXISTING**
- INLET
  - CATCH BASIN
  - ⊙ MANHOLE
  - STORM SEWER
  - COMBINED SEWER
  - PIPE UNDERDRAIN
  - [R] STRUCTURE TO BE REMOVED
  - [AD] STRUCTURE TO BE ADJUSTED
  - //// STORM SEWER REMOVAL
  - //// COMBINED SEWER REMOVAL



- EXISTING CONDITIONS AND REMOVAL**
- PROPOSED IMPROVEMENTS**
- LEGEND: PROPOSED**
- INLET
  - CATCH BASIN
  - ⊙ MANHOLE
  - STORM SEWER
  - COMBINED SEWER
  - PIPE UNDERDRAIN
  - PROPOSED SWALE
  - ⊙ EA 01 PROPOSED STORM SEWER PIPE
  - △ EA 01 PROPOSED STRUCTURE
  - WORK TO BE DONE BY OTHERS
- NOTES:**
- SEE DRAINAGE SCHEDULES FOR STRUCTURE AND PIPE INFORMATION.
  - INLET FILTERS TO BE INSTALLED ON ALL PROPOSED DRAINAGE STRUCTURES.

**CTE ENGINEERS**  
 CONSOER TOWNSEND ENVIRONMENTAL ENGINEERS, INC.  
 303 EAST WACKER DRIVE, SUITE 600  
 CHICAGO, ILLINOIS 60601-5212, PHONE: (312) 338-0300

EJ 09  
 CB, TYPE A, 4' DIA.  
 TYPE 1 OPEN LID  
 STA. 143+25.00, 28' RT  
 RIM EL. 17.17  
 INV. EL. 12.07 (W) 8" DIA.

REVISIONS	
NAME	DATE

ILLINOIS DEPARTMENT OF TRANSPORTATION  
 F.A.I. 90/94 (DAN RYAN EXPRESSWAY)  
 59th ST TO 57th ST (WENTWORTH AVENUE)

**DRAINAGE AND UTILITY PLANS  
 WENTWORTH AVENUE**

SCALE: 1"=20'  
 DATE: OCTOBER 29, 2004  
 DRAWN BY: JB  
 CHECKED BY: EEE

17/257/2004 08:31:23 AM