

F.A.I. RTE.	SECTION	COUNTY	TOTAL SHEETS	SHEET NO.
90/94	2004-099TS	COOK	65	8
STA. TO STA.		FED. ROAD DIST. NO. 1 ILLINOIS FED. AID PROJECT		
62840				

**CURVE EKWELLO1**  
P.I. STA= 9+04.39  
N= 1,861,874.35  
E= 1,176,076.45  
Δ= 10° 52' 16"  
D= 5° 40' 05"  
R= 1,010.83'  
T= 96.18'  
L= 191.79'  
E= 4.56'  
e= N/A  
T.R.= N/A  
S.E. RUN= N/A  
P.C. STA= 8+08.21  
N= 1,861,778.19  
E= 1,176,078.94  
P.T. STA= 10+00.00  
N= 1,861,968.30  
E= 1,176,055.87

**CURVE EKWELLO3**  
P.I. STA= 12+18.75  
N= 1,862,163.15  
E= 1,175,963.41  
Δ= 2° 58' 46"  
D= 2° 15' 54"  
R= 2,529.60'  
T= 65.78'  
L= 131.54'  
E= 0.85'  
e= N/A  
T.R.= N/A  
S.E. RUN= N/A  
P.C. STA= 11+52.96  
N= 1,862,109.97  
E= 1,176,002.13  
P.T. STA= 12+84.51  
N= 1,862,218.28  
E= 1,175,927.50

**CURVE EKWELLO5**  
P.I. STA= 19+10.50  
N= 1,862,770.39  
E= 1,175,632.97  
Δ= 12° 45' 31"  
D= 6° 11' 38"  
R= 925.00'  
T= 103.41'  
L= 205.97'  
E= 5.76'  
e= N/A  
T.R.= N/A  
S.E. RUN= N/A  
P.C. STA= 18+07.09  
N= 1,862,678.46  
E= 1,175,680.34  
P.T. STA= 20+13.07  
N= 1,862,870.51  
E= 1,175,607.06

**SPIRAL NBDRO1B**  
P.I. STA= 2410+35.55  
N= 1,862,075.46  
E= 1,176,284.87  
Δ= 6° 30' 41"  
LS= 348.44'  
YS= 13.19'  
XS= 347.99'  
P= 3.30'  
K= 174.15'  
LT= 232.45'  
ST= 116.29'  
LC= 348.24'  
T.S. STA= 2408+03.10  
N= 1,861,914.79  
E= 1,176,452.86  
S.C. STA= 2411+51.54  
N= 1,862,164.85  
E= 1,176,210.49

**CURVE EKWELLO2**  
P.I. STA= 10+99.36  
N= 1,862,065.35  
E= 1,176,034.61  
Δ= 23° 41' 58"  
D= 21° 47' 07"  
R= 263.00'  
T= 55.18'  
L= 108.78'  
E= 4.56'  
e= N/A  
T.R.= N/A  
S.E. RUN= N/A  
P.C. STA= 10+44.17  
N= 1,862,011.45  
E= 1,176,002.13  
P.T. STA= 11+52.96  
N= 1,862,109.97  
E= 1,176,002.13

**CURVE EKWELLO4**  
P.I. STA= 13+72.28  
N= 1,862,291.83  
E= 1,175,879.60  
Δ= 5° 48' 38"  
D= 3° 18' 45"  
R= 1,729.58'  
T= 87.77'  
L= 175.40'  
E= 2.22'  
e= N/A  
T.R.= N/A  
S.E. RUN= N/A  
P.C. STA= 12+84.51  
N= 1,862,218.28  
E= 1,175,927.50  
P.T. STA= 14+59.61  
N= 1,862,369.86  
E= 1,175,839.39

**CURVE EKWELLO6**  
P.I. STA= 21+01.89  
N= 1,862,957.45  
E= 1,175,589.82  
Δ= 5° 16' 59"  
D= 6° 48' 23"  
R= 841.78'  
T= 38.83'  
L= 77.62'  
E= 0.89'  
e= N/A  
T.R.= N/A  
S.E. RUN= N/A  
P.C. STA= 20+63.05  
N= 1,862,918.90  
E= 1,175,594.54  
P.T. STA= 21+40.67  
N= 1,862,996.27  
E= 1,175,588.66

**CURVE EBSKY01**  
P.I. STA= 5001+75.92  
N= 1,862,163.03  
E= 1,176,022.04  
Δ= 11° 35' 10"  
D= 3° 18' 15"  
R= 1734.00'  
T= 175.92'  
L= 350.64'  
E= 8.90'  
e= 5.0%  
T.R.= 48' (96')  
S.E. RUN= 135'  
P.C. STA= 5000+00.00  
N= 1,862,314.67  
E= 1,176,332.87  
P.T. STA= 5003+50.64  
N= 1,862,032.38  
E= 1,176,139.85

**CURVE SBLOCS03**  
P.I. STA= 3411+09.43  
N= 1,862,129.66  
E= 1,176,041.66  
Δ= 9° 54' 30"  
D= 3° 15' 20"  
R= 2476.00'  
T= 214.63'  
L= 428.19'  
E= 9.29'  
e= 5.0%  
T.R.= 41'  
S.E. RUN= 205'  
P.C. STA= 3408+94.80  
N= 1,861,966.12  
E= 1,176,180.66  
P.T. STA= 3413+22.99  
N= 1,862,314.67  
E= 1,175,932.87

**CURVE SBDRO5**  
P.I. STA= 1415+93.26  
N= 1,862,464.42  
E= 1,175,788.71  
Δ= 44° 41' 46"  
D= 3° 15' 20"  
R= 1760.00'  
T= 723.55'  
L= 1372.97'  
E= 142.93'  
e= 5.9%  
T.R.= 41' (41')  
S.E. RUN= 262.17' (242')  
P.C. STA= 1408+69.71  
N= 1,861,964.32  
E= 1,176,311.62  
P.T. STA= 1422+42.67  
N= 1,863,187.69  
E= 1,175,768.74

**CURVE SBLOCS04**  
P.I. STA= 3417+65.48  
N= 1,862,696.11  
E= 1,175,708.58  
Δ= 28° 37' 52"  
D= 3° 18' 15"  
R= 1734.00'  
T= 442.49'  
L= 866.49'  
E= 55.57'  
e= 5.9%  
T.R.= (41')  
S.E. RUN= (242')  
P.C. STA= 3413+22.99  
N= 1,862,314.67  
E= 1,175,932.87  
P.T. STA= 3421+89.48  
N= 1,863,138.37  
E= 1,175,694.49

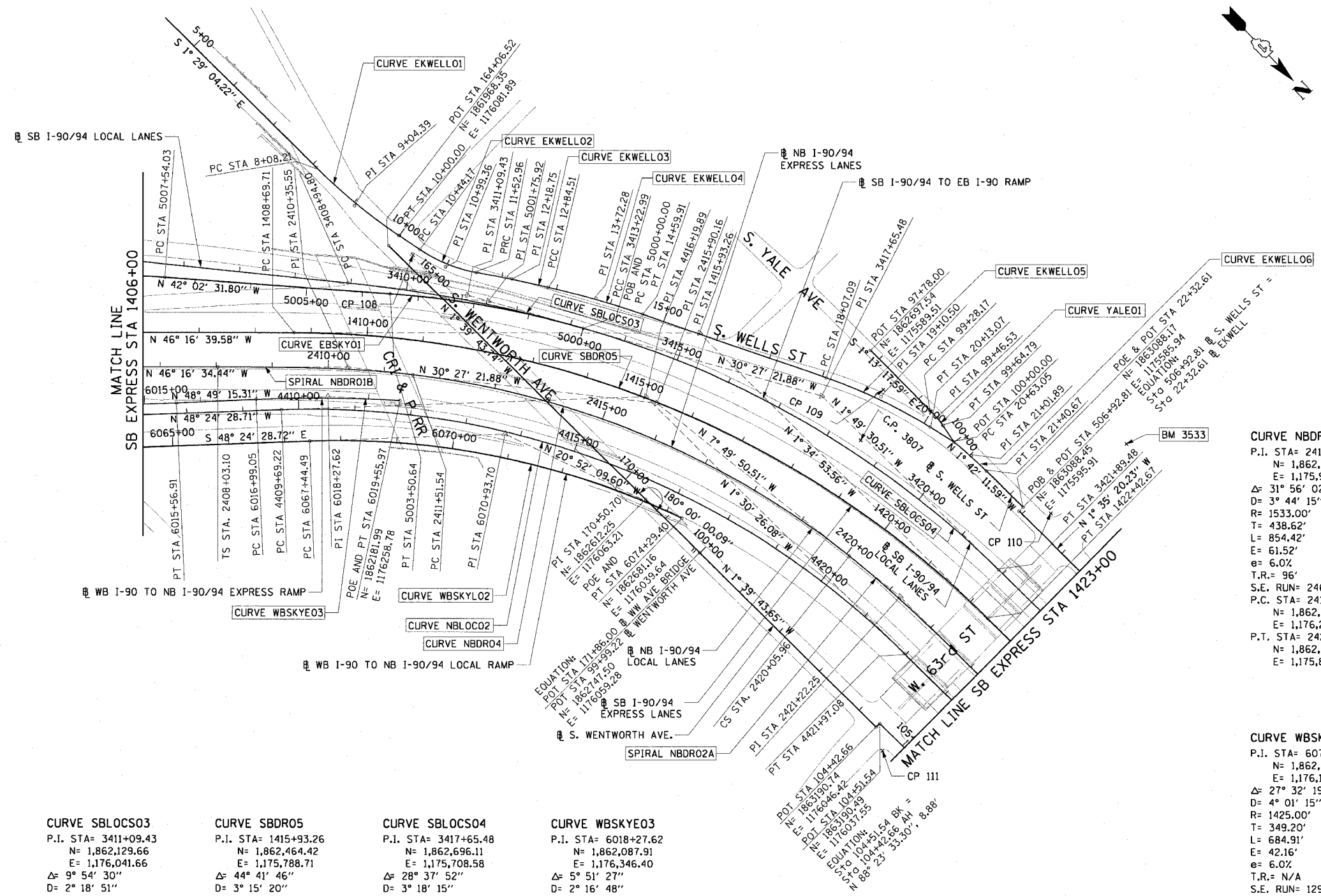
**CURVE WBSKYE03**  
P.I. STA= 6018+27.62  
N= 1,862,087.91  
E= 1,176,346.40  
Δ= 5° 51' 27"  
D= 2° 16' 48"  
R= 2513.00'  
T= 128.57'  
L= 256.91'  
E= 3.29'  
e= 6.0%  
T.R.= N/A  
S.E. RUN= 156.14' (145')  
P.C. STA= 6016+99.05  
N= 1,862,003.26  
E= 1,176,443.17  
P.T. STA= 6019+55.97  
N= 1,862,181.99  
E= 1,176,258.78

**CURVE NBLOCO2**  
P.I. STA= 4416+19.89  
N= 1,862,479.88  
E= 1,175,936.27  
Δ= 46° 54' 02"  
D= 3° 49' 11"  
R= 1500.00'  
T= 650.67'  
L= 1227.85'  
E= 135.05'  
e= 6.0%  
T.R.= 41' (96')  
S.E. RUN= 277.55' (246')  
P.C. STA= 4409+69.22  
N= 1,862,047.95  
E= 1,176,422.90  
P.T. STA= 4421+97.08  
N= 1,863,130.33  
E= 1,175,919.15

**SPIRAL NBDRO2A**  
P.I. STA= 2421+22.25  
N= 1,863,051.74  
E= 1,175,854.32  
Δ= 6° 30' 41"  
D= 3° 44' 15"  
R= 348.44'  
YS= 13.19'  
XS= 347.99'  
P= 3.30'  
K= 174.15'  
LT= 232.45'  
ST= 116.29'  
LC= 348.24'  
C.S. STA= 2420+05.96  
N= 1,862,936.54  
E= 1,175,870.16  
S.T. STA= 2423+54.40  
N= 1,863,284.13  
E= 1,175,848.97

**CURVE WBSKYE02**  
P.I. STA= 6070+93.70  
N= 1,862,354.86  
E= 1,176,164.04  
Δ= 27° 32' 19"  
D= 4° 01' 15"  
R= 1425.00'  
T= 349.20'  
L= 684.91'  
E= 42.16'  
e= 6.0%  
T.R.= N/A  
S.E. RUN= 129'  
P.C. STA= 6067+44.49  
N= 1,862,123.05  
E= 1,176,425.21  
P.T. STA= 6074+29.40  
N= 1,862,681.16  
E= 1,176,039.64

**CURVE YALE01**  
P.I. STA= 99+46.53  
N= 1,862,866.03  
E= 1,175,585.91  
Δ= 10° 29' 32"  
D= 28° 38' 52"  
R= 200.00'  
T= 18.36'  
L= 36.62'  
E= 0.84'  
e= N/A  
T.R.= N/A  
S.E. RUN= N/A  
P.C. STA= 99+28.17  
N= 1,862,847.67  
E= 1,175,586.30  
P.T. STA= 99+64.79  
N= 1,862,884.15  
E= 1,175,588.87



- NOTES:**
- AVERAGE GRID TO GROUND CONVERSION FACTOR = 1.000010988654360
  - FOR BENCH MARK INFORMATION, SEE SHEET 1 OF ALIGNMENT PLAN SHEETS.

REVISIONS	
NAME	DATE

ILLINOIS DEPARTMENT OF TRANSPORTATION  
F.A.I. 90/94 (DAN RYAN EXPRESSWAY)  
TRAFFIC SIGNALS AT 63RD STREET AND  
WENTWORTH AVENUE/ WELLS STREET  
ALIGNMENT PLAN

SCALE: 1"=100'  
DATE: November 05, 2004

DRAWN BY: NJH/AMM  
CHECKED BY: JAL/MS



11/04/2004 12:14:54 PM