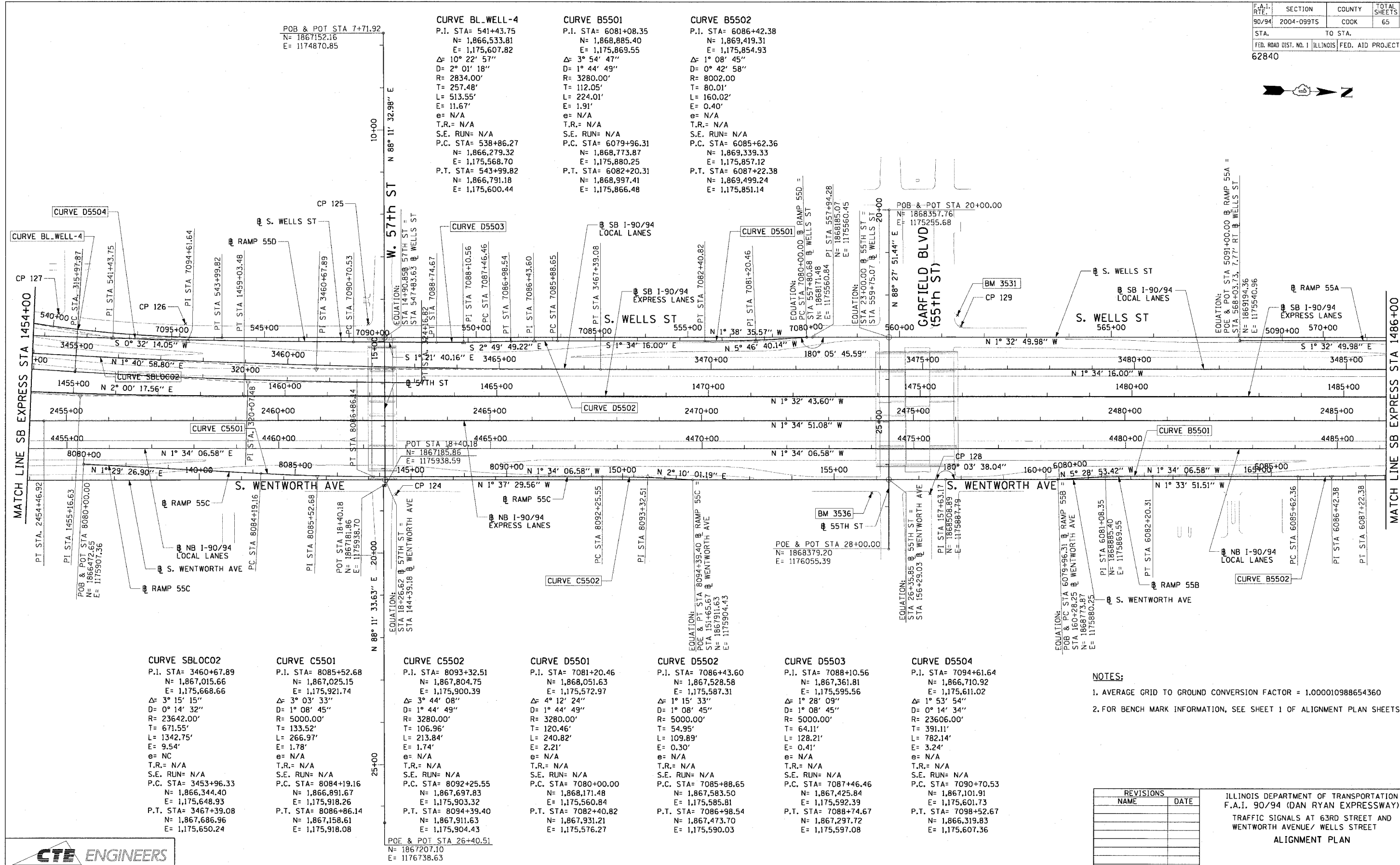


F.A.I. SHEET NO.	SECTION	COUNTY	TOTAL SHEETS	SHEET NO.
90/94	2004-099TS	COOK	65	10
STA. TO STA.		FED. ROAD DIST. NO. 1 ILLINOIS FED. AID PROJECT		
62840				



CURVE BL.WELL-4	CURVE B5501	CURVE B5502
P.I. STA= 541+43.75 N= 1,866,533.81 E= 1,175,607.82 Δ= 10° 22' 57" D= 2° 01' 18" R= 2834.00' T= 257.48' L= 513.55' E= 11.67' e= N/A T.R.= N/A S.E. RUN= N/A P.C. STA= 538+86.27 N= 1,866,279.32 E= 1,175,568.70 P.T. STA= 543+99.82 N= 1,866,791.18 E= 1,175,600.44	P.I. STA= 6081+08.35 N= 1,868,885.40 E= 1,175,869.55 Δ= 3° 54' 47" D= 1° 44' 49" R= 3280.00' T= 112.05' L= 224.01' E= 1.91' e= N/A T.R.= N/A S.E. RUN= N/A P.C. STA= 6079+96.31 N= 1,868,773.87 E= 1,175,880.25 P.T. STA= 6082+20.31 N= 1,868,997.41 E= 1,175,866.48	P.I. STA= 6086+42.38 N= 1,869,419.31 E= 1,175,854.93 Δ= 1° 08' 45" D= 0° 42' 58" R= 8002.00' T= 80.01' L= 160.02' E= 0.40' e= N/A T.R.= N/A S.E. RUN= N/A P.C. STA= 6085+62.36 N= 1,869,339.33 E= 1,175,857.12 P.T. STA= 6087+22.38 N= 1,869,499.24 E= 1,175,851.14

CURVE SBLOC02
P.I. STA= 3460+67.89 N= 1,867,015.66 E= 1,175,668.66 Δ= 3° 15' 15" D= 0° 14' 32" R= 23642.00' T= 671.55' L= 1342.75' E= 9.54' e= NC T.R.= N/A S.E. RUN= N/A P.C. STA= 3453+96.33 N= 1,866,344.40 E= 1,175,648.93 P.T. STA= 3467+39.08 N= 1,867,686.96 E= 1,175,650.24

CURVE C5501
P.I. STA= 8085+52.68 N= 1,867,025.15 E= 1,175,921.74 Δ= 3° 03' 33" D= 1° 08' 45" R= 5000.00' T= 133.52' L= 266.97' E= 1.78' e= N/A T.R.= N/A S.E. RUN= N/A P.C. STA= 8084+19.16 N= 1,866,891.67 E= 1,175,918.26 P.T. STA= 8086+86.14 N= 1,867,158.61 E= 1,175,918.08

CURVE C5502
P.I. STA= 8093+32.51 N= 1,867,804.75 E= 1,175,900.39 Δ= 3° 44' 08" D= 1° 44' 49" R= 3280.00' T= 106.96' L= 213.84' E= 1.74' e= N/A T.R.= N/A S.E. RUN= N/A P.C. STA= 8092+25.55 N= 1,867,697.83 E= 1,175,903.32 P.T. STA= 8094+39.40 N= 1,867,911.63 E= 1,175,904.43

CURVE D5501
P.I. STA= 7081+20.46 N= 1,868,051.63 E= 1,175,572.97 Δ= 4° 12' 24" D= 1° 44' 49" R= 3280.00' T= 54.95' L= 240.82' E= 2.21' e= N/A T.R.= N/A S.E. RUN= N/A P.C. STA= 7080+00.00 N= 1,868,171.48 E= 1,175,560.84 P.T. STA= 7082+40.82 N= 1,867,931.21 E= 1,175,576.27

CURVE D5502
P.I. STA= 7086+43.60 N= 1,867,528.58 E= 1,175,587.31 Δ= 1° 15' 33" D= 1° 08' 45" R= 5000.00' T= 64.11' L= 109.89' E= 0.30' e= N/A T.R.= N/A S.E. RUN= N/A P.C. STA= 7085+88.65 N= 1,867,583.50 E= 1,175,585.81 P.T. STA= 7086+98.54 N= 1,867,473.70 E= 1,175,590.03

CURVE D5503
P.I. STA= 7088+10.56 N= 1,867,361.81 E= 1,175,595.56 Δ= 1° 28' 09" D= 1° 08' 45" R= 5000.00' T= 54.95' L= 128.21' E= 0.41' e= N/A T.R.= N/A S.E. RUN= N/A P.C. STA= 7087+46.46 N= 1,867,425.84 E= 1,175,592.39 P.T. STA= 7088+74.67 N= 1,867,297.72 E= 1,175,597.08

CURVE D5504
P.I. STA= 7094+61.64 N= 1,866,710.92 E= 1,175,611.02 Δ= 1° 53' 54" D= 0° 14' 34" R= 23606.00' T= 391.11' L= 782.14' E= 3.24' e= N/A T.R.= N/A S.E. RUN= N/A P.C. STA= 7090+70.53 N= 1,867,101.91 E= 1,175,601.73 P.T. STA= 7098+52.67 N= 1,866,319.83 E= 1,175,607.36

NOTES:

- AVERAGE GRID TO GROUND CONVERSION FACTOR = 1.000010988654360
- FOR BENCH MARK INFORMATION, SEE SHEET 1 OF ALIGNMENT PLAN SHEETS.

REVISIONS	
NAME	DATE

ILLINOIS DEPARTMENT OF TRANSPORTATION
 F.A.I. 90/94 (DAN RYAN EXPRESSWAY)
 TRAFFIC SIGNALS AT 63RD STREET AND
 WENTWORTH AVENUE/ WELLS STREET
ALIGNMENT PLAN

SCALE: 1"=100'
 DATE: November 05, 2004
 DRAWN BY: NJH/AMM
 CHECKED BY: JAL/MS



11/04/2004 12:15:56 PM