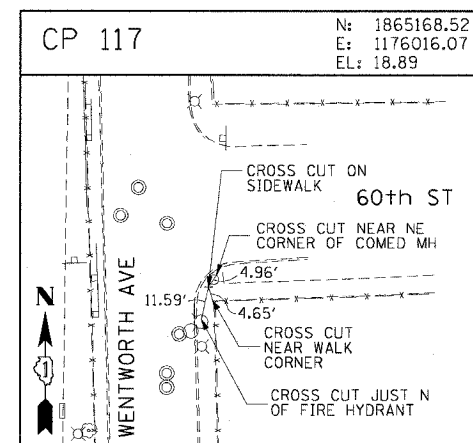
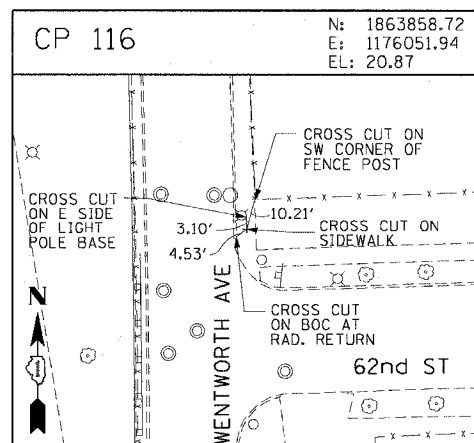
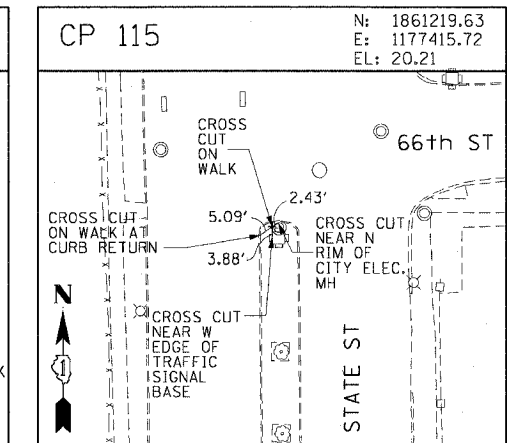
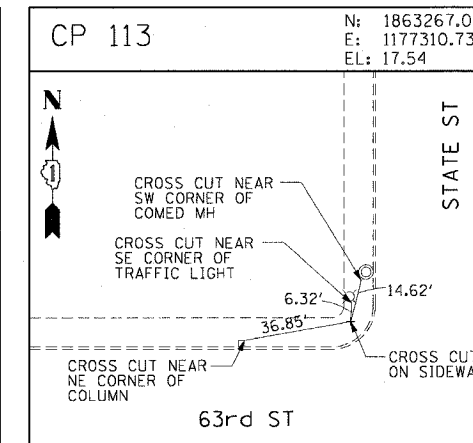
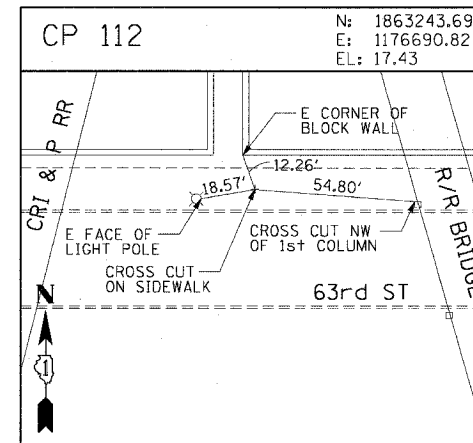
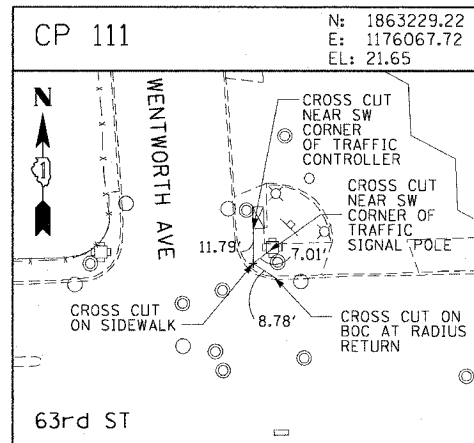
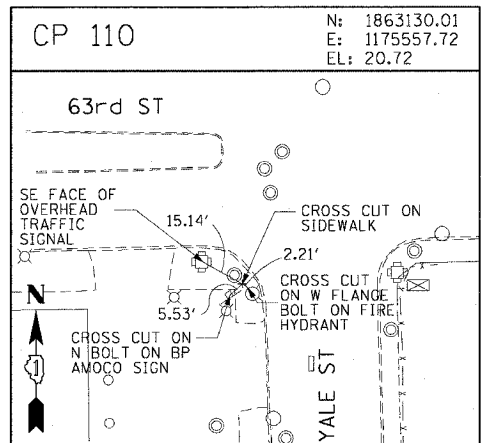
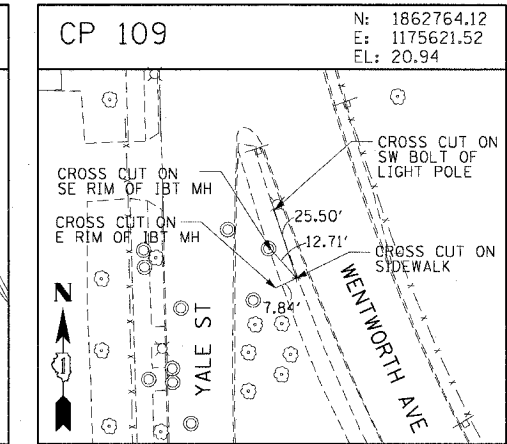
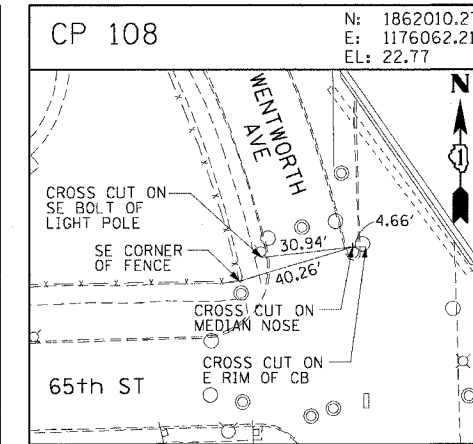
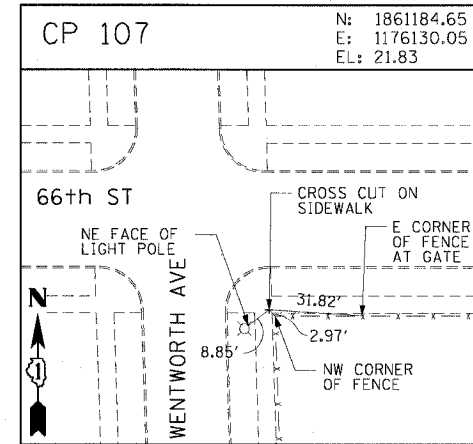
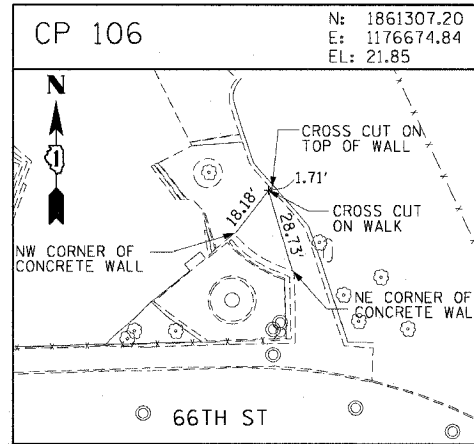
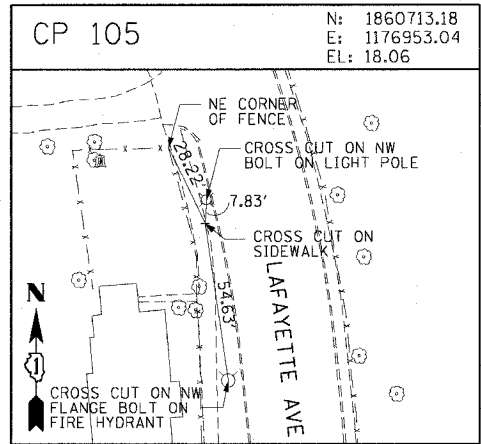
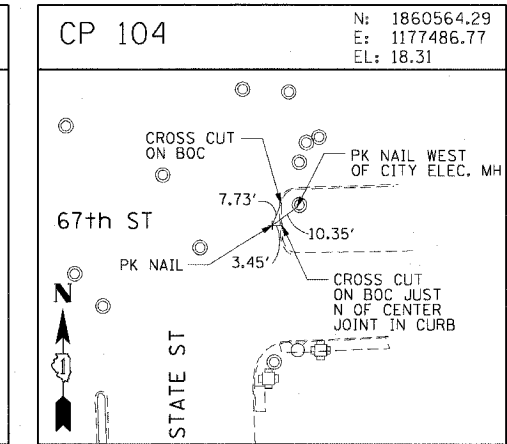
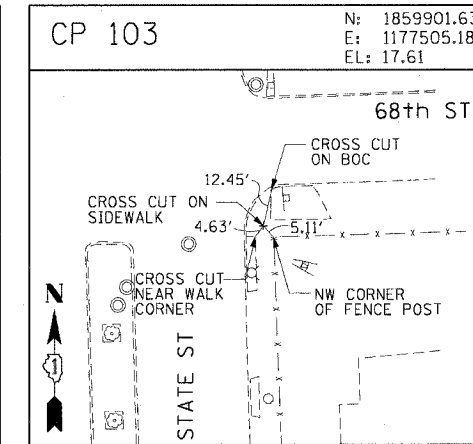
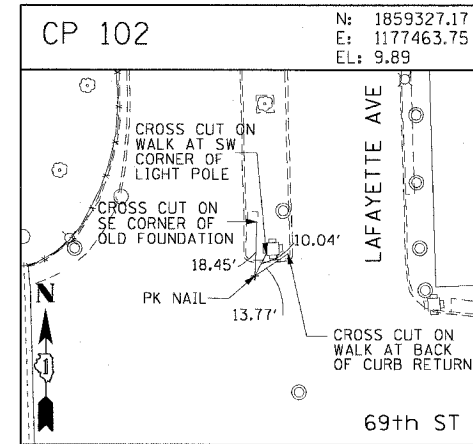
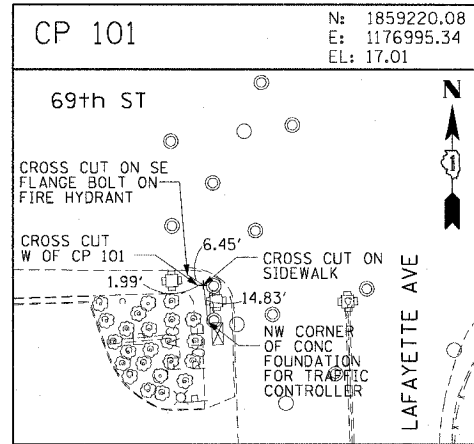
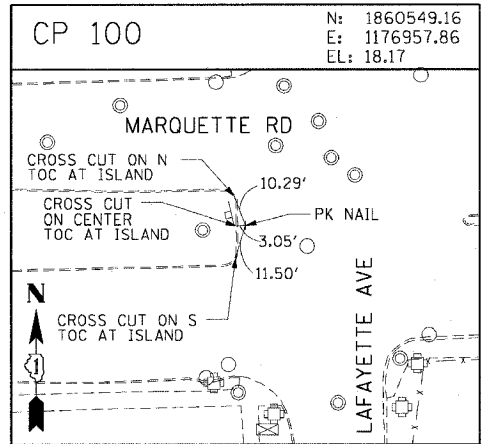


F.A.I. RTE.	SECTION	COUNTY	TOTAL SHEETS	SHEET NO.
90/94	2004-0991S	COOK	65	13
STA.	TO STA.			
FED. ROAD DIST. NO. 1 ILLINOIS FED. AID PROJECT 62840				



REVISIONS	
NAME	DATE

ILLINOIS DEPARTMENT OF TRANSPORTATION  
 F.A.I. 90/94 (DAN RYAN EXPRESSWAY)  
 TRAFFIC SIGNALS AT 63RD STREET AND  
 WENTWORTH AVENUE/ WELLS STREET  
 SURVEY TIES AND CONTROL POINTS

SCALE: 1"=30'  
 DATE: November 05, 2004  
 DRAWN BY: MRK  
 CHECKED BY: JAL

MAY-04-06:00 AM - C:\p\90-94\1176067.72\CP111.DWG  
 11/04/2004 12:25:55 PM