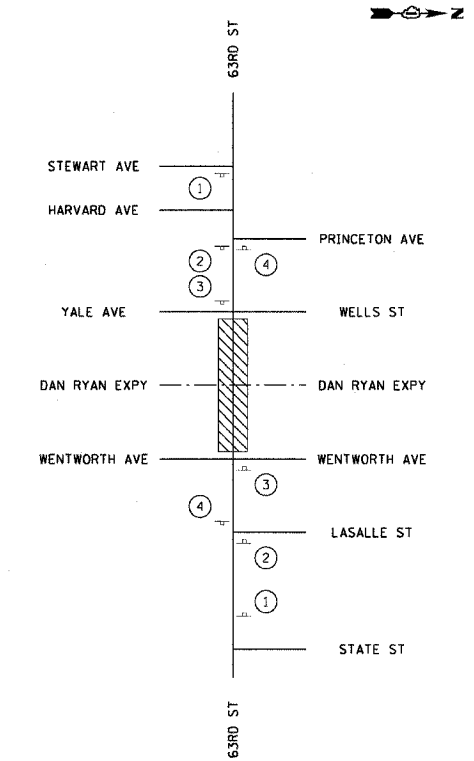
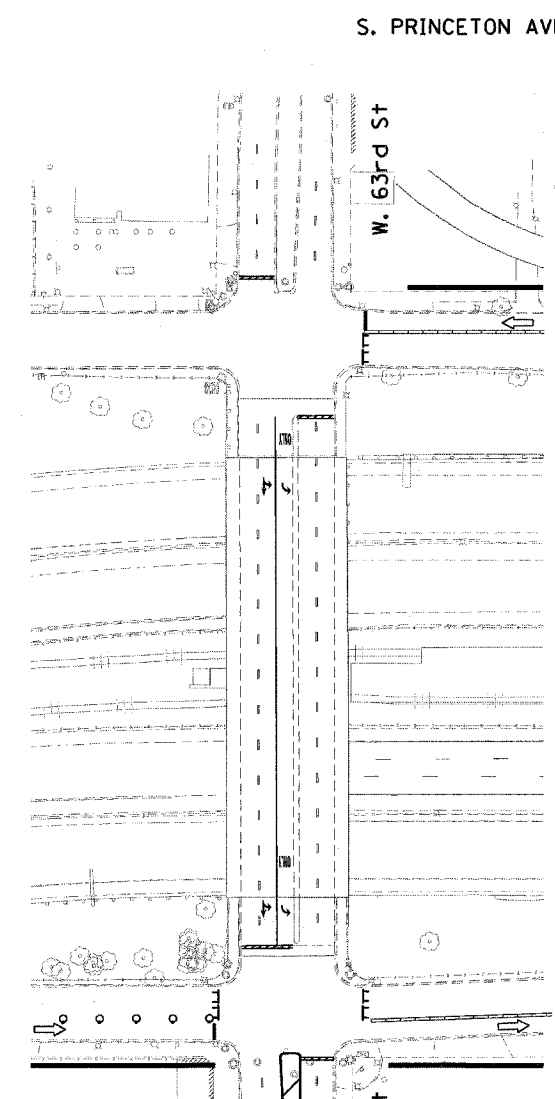
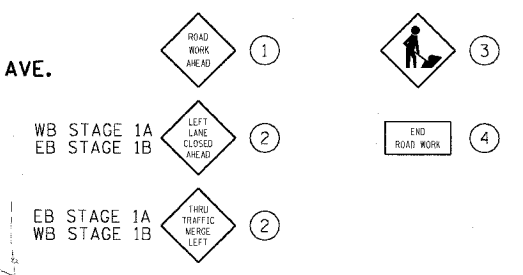


F.A.I. RITE:	SECTION	COUNTY	TOTAL SHEETS	SHEET NO.
90/94	2004-099TS	COOK	65	20
STA.	TO STA.			
FED. ROAD DIST. NO. 1		ILLINOIS	FED. AID PROJECT	
62840				

FOR REFERENCE ONLY
WORK BY IDOT CONTRACT 9C-62693

TYPICAL SIGN PLACEMENT



- NOTES:
1. MINIMUM SIGN SPACING OF 200'. PRECISE SIGN PLACEMENT NOT REPRESENTED. REFERENCE IDOT STANDARD 701601-03 FOR SPACING.
 2. COMPLETION OF STAGE 1B SHOULD BE IMMEDIATELY FOLLOWED BY THE START OF STAGE 2A. IF STAGES 1A AND 1B ARE COMPLETE, AND THE SWITCH TO STAGE 2 IS NOT POSSIBLE FOR 7 OR MORE DAYS, ALL LANES ON THE BRIDGE ARE TO BE RESTORED AS SHOWN OR AS DIRECTED BY THE ENGINEER.
 3. ALL PAVEMENT MARKINGS SHOWN ARE PAVEMENT MARKING TAPE TYPE III.

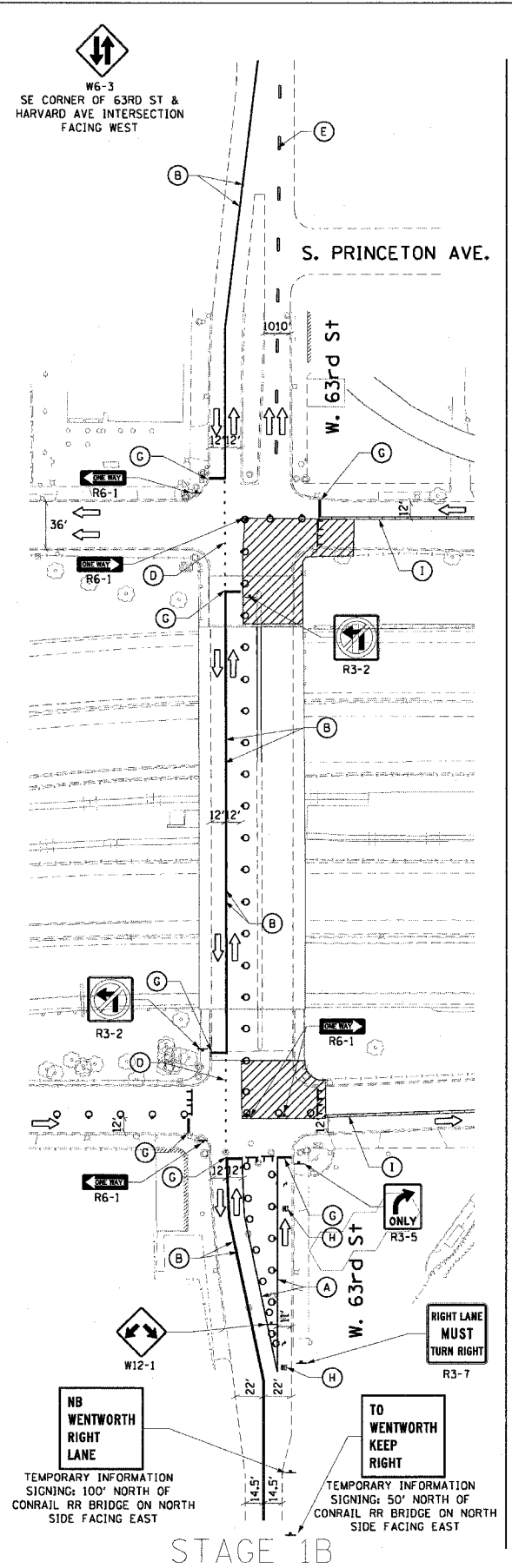
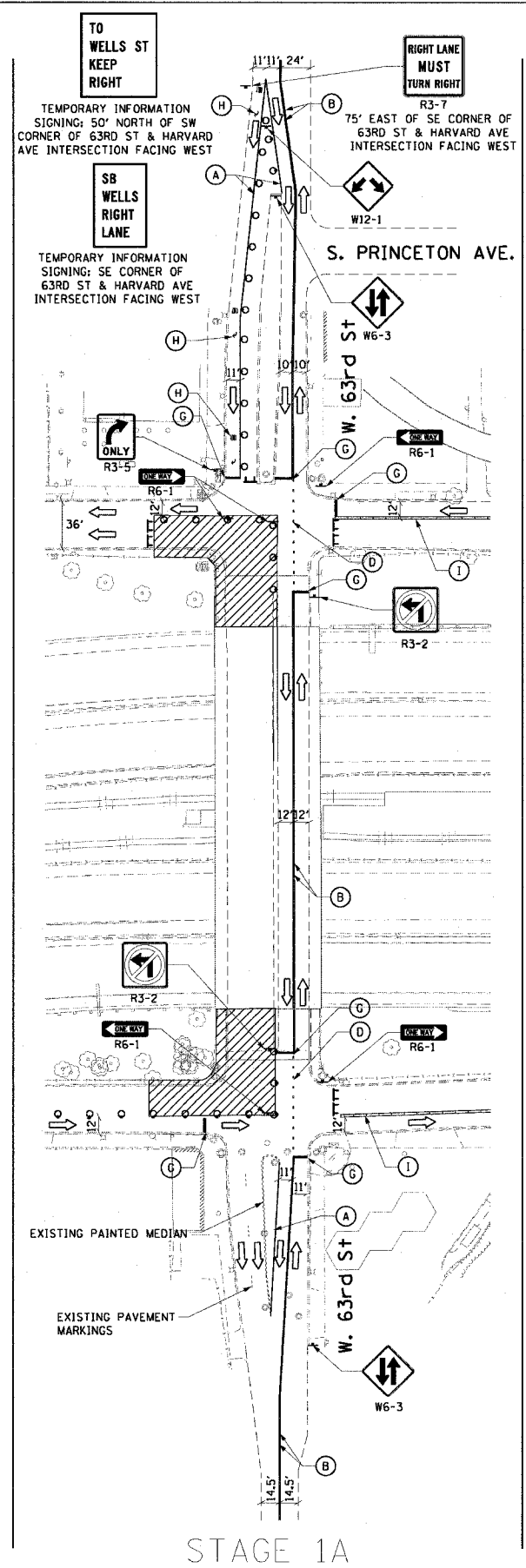
REVISIONS	
NAME	DATE

ILLINOIS DEPARTMENT OF TRANSPORTATION
F.A.I. 90/94 (DAN RYAN EXPRESSWAY)
TRAFFIC SIGNALS AT 63RD STREET AND WENTWORTH AVENUE/ WELLS STREET
SUGGESTED STAGES OF CONSTRUCTION AND TRAFFIC CONTROL
STAGE 1

SCALE: 1"=60'
DATE: November 05, 2004
DRAWN BY: SWANG
CHECKED BY: RMG

LEGEND

- (A) TEMPORARY PAVEMENT MARKING 4", WHITE, SOLID
- (B) TEMPORARY PAVEMENT MARKING 4", YELLOW, SOLID
- (C) TEMPORARY PAVEMENT MARKING 4", WHITE, 2' DASH/6'SKIP
- (D) TEMPORARY PAVEMENT MARKING 4", YELLOW, 2' DASH/6' SKIP
- (E) TEMPORARY PAVEMENT MARKING 4", WHITE, 6' DASH/18' SKIP
- (F) TEMPORARY PAVEMENT MARKING 12", YELLOW, SOLID
- (G) TEMPORARY PAVEMENT MARKING 24", WHITE, SOLID
- (H) TEMPORARY PAVEMENT MARKING SYMBOLS
- (I) TEMPORARY CONCRETE BARRIER (CONTRACTOR FURNISHED)
- DRUM WITH STEADY BURNING LIGHT (25' SPACING, TYPICAL)
- ▬ TYPE III BARRICADE
- ARROW BOARD
- ▨ WORK AREA



BETWEEN STAGE 1 & 2
(IF NECESSARY)

M:\P\40465\GWIN\HC-Cnt\90-Add_Cnt\90CB.63rd St\MT 9090012A.DWG 11/04/2004 09:20:06 AM