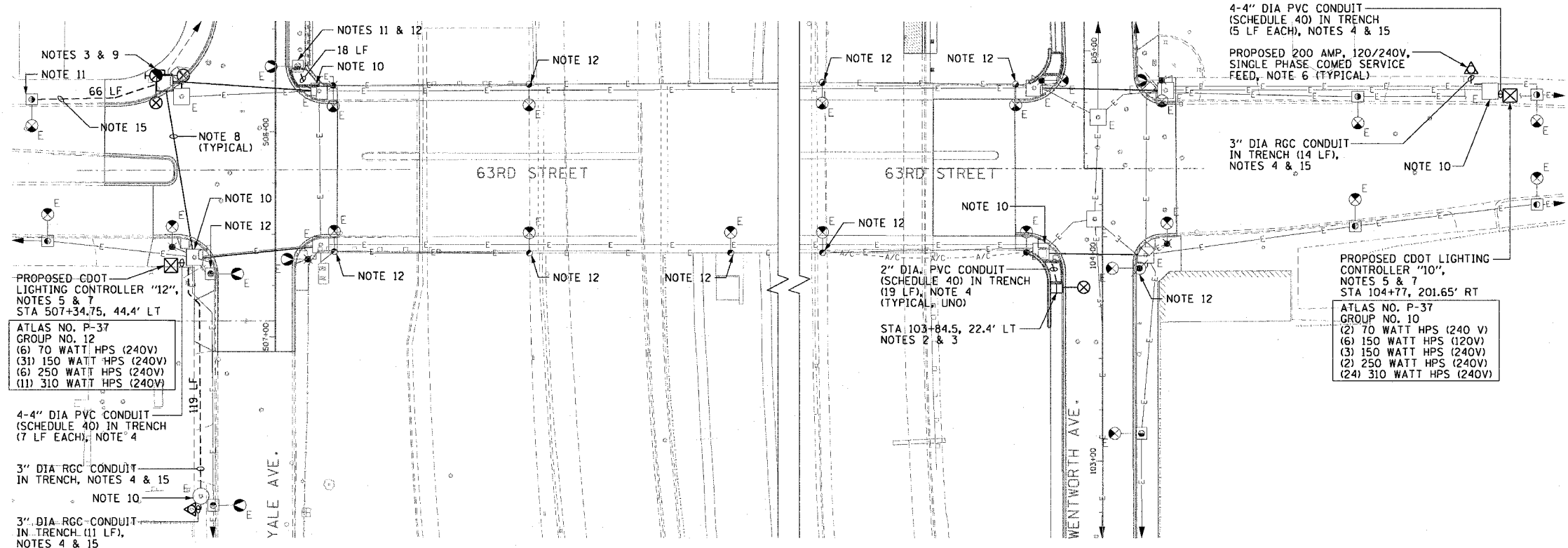
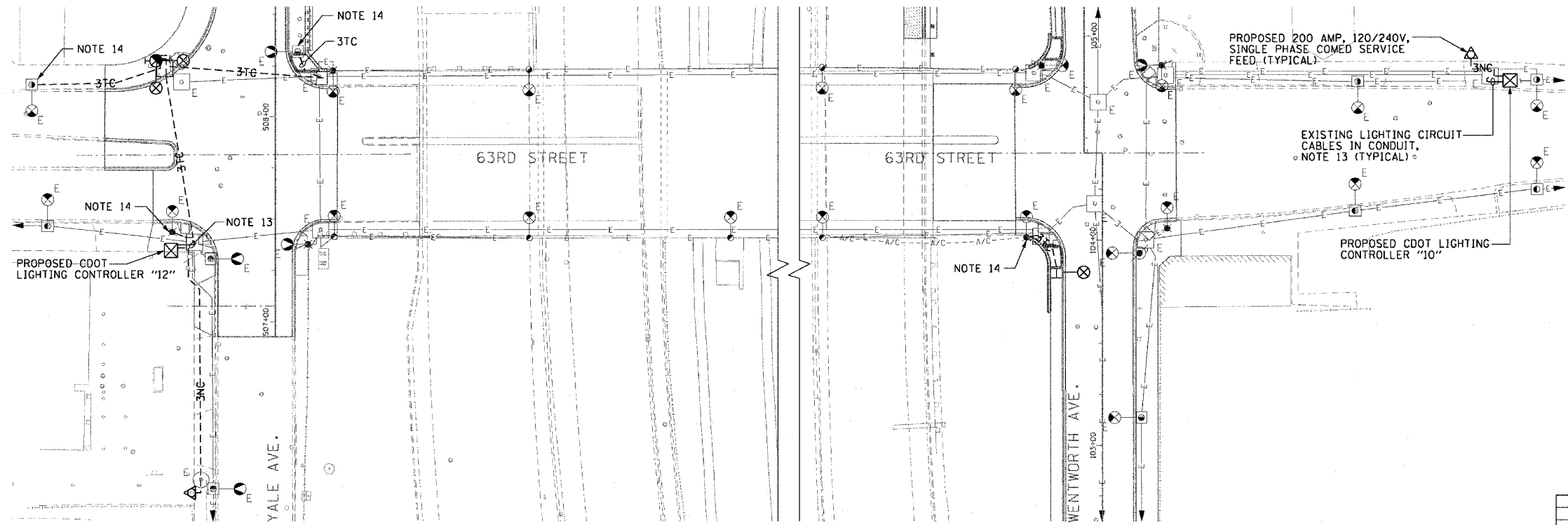


F.A.I. NO.	SECTION	COUNTY	TOTAL SHEETS	SHEET NO.
90/94	2004-099TS	COOK	65	28
STA.	TO STA.			
FED. ROAD DIST. NO. 1	ILLINOIS	FED. AID PROJECT	62840	



PROPOSED IMPROVEMENTS
(NOTE 16)



WIRING PLAN
(NOTE 16)

- NOTES:**
- SEE DRAWINGS E-1 AND E-2 FOR CDOT ELECTRICAL GENERAL NOTES, SYMBOLS, AND ABBREVIATIONS.
 - SEE DRAWINGS BOE-11 AND BOE-15 FOR BOE GROUND MOUNTED LIGHT POLE AND FOUNDATION DETAILS.
 - SEE DRAWING BOE-24 FOR BOE LIGHTING MAST ARM DETAILS.
 - SEE DRAWING BOE-2 FOR BOE CONDUIT IN TRENCH DETAIL.
 - SEE DRAWING BOE-30 FOR 200 AMP BASE MOUNTED STREET LIGHTING CONTROLLER DETAILS.
 - PROVIDE A NEW 120/240 VOLT, 200 AMPERE, SINGLE PHASE COMED SERVICE FEED FOR PROPOSED CDOT LIGHTING CONTROLLER. SEE DRAWING BOE-42 FOR COMED SERVICE DETAILS.
 - PROVIDE A NEW 200 AMP, 1 PHASE, 120/240 VOLT STREET LIGHTING CONTROLLER AND CONCRETE FOUNDATION. PROVIDE 1-200 AMP, 2 POLE MAIN CIRCUIT BREAKER; 5-50 AMP (2-SPARE), 2 POLE CIRCUIT BREAKERS; 1-70 AMP, 1-POLE CIRCUIT BREAKER FOR TRAFFIC SIGNAL CONTROLLER; 1-100 AMP, 1-POLE CIRCUIT BREAKER FOR VIADUCT LIGHTING (CONTROLLER "10" ONLY). PROVIDE ALL NECESSARY MATERIALS AND LABOR TO CONNECT THE NEW AND EXISTING SECONDARY BRANCH CIRCUITS TO THE NEW CONTROLLER. INSTALL THE STREET LIGHTING CONTROLLER AS SHOWN ON THE BOE STANDARD DRAWINGS AND AS DIRECTED BY THE ENGINEER.
 - PROPOSED CONDUIT RUN WILL BE MEASURED OR COUNTED FOR PAYMENT UNDER THE APPROPRIATE TRAFFIC SIGNAL PAY ITEM. REFER TO THE TRAFFIC SIGNAL PLANS TYPE AND LENGTH OF CONDUIT RUNS.
 - PROPOSED COMBINATION TRAFFIC SIGNAL/LIGHTING UNIT. MAST ARM AND LUMINAIRE WILL BE COUNTED FOR PAYMENT ON THIS DRAWING UNDER THE APPROPRIATE LIGHTING PAY ITEMS. THE POLE AND FOUNDATION WILL BE COUNTED FOR PAYMENT ON THE TRAFFIC SIGNAL PLANS UNDER THE APPROPRIATE TRAFFIC SIGNAL PAY ITEMS. SEE THE TRAFFIC SIGNAL PLANS FOR DETAILS.
 - ROUTE PROPOSED CONDUIT RUNS TO THE EXISTING MANHOLE OR HANDHOLE AS SHOWN. DRILL EXISTING MANHOLE OR HANDHOLE AND INSTALL PROPOSED CONDUIT THROUGH THE MANHOLE OR HANDHOLE WALL. SEE DRAWING BOE-13 FOR DETAILS.
 - INTERCEPT EXISTING CONDUIT STUB AT THE FOUNDATION OF THE EXISTING LIGHTING UNIT TO REMAIN. PROVIDE NEW LIGHTING CIRCUIT CABLES IN CONDUIT TO THE EXISTING LIGHTING UNIT.
 - PAINT EXISTING LIGHT POLE, MAST ARM, AND LUMINAIRE (10 TOTAL) TO MATCH NEW.
 - PULL EXISTING LIGHTING CIRCUIT CABLES COILED IN EXISTING MANHOLE THROUGH PROPOSED CONDUIT TO THE PROPOSED LIGHTING CONTROLLER. CONNECT EXISTING LIGHTING CIRCUITS TO NEW CIRCUIT BREAKERS. SEE DRAWING BOE-25 FOR CONTROLLER WIRING DIAGRAM.
 - SPLICE THE NEW CABLES TO THE EXISTING LIGHTING CIRCUIT LOCATED AT THE BASE OF THE EXISTING POLE. SEE POLE BASE WIRING DETAIL ON DRAWING E-13.
 - SAWCUT THE EXISTING PAVEMENT AND/OR SIDEWALK TO INSTALL THE NEW CONDUIT. AFTER ELECTRICAL WORK IS COMPLETED, PATCH THE PAVEMENT AND/OR SIDEWALK TO MATCH THE EXISTING.
 - COORDINATE ALL ELECTRICAL WORK WITH CIVIL WORK, TRAFFIC SIGNAL WORK, SUGGESTED STAGES OF CONSTRUCTION, TRAFFIC CONTROL PLANS, AND IDOT CONTRACT NOS. 62693 AND 62842.
 - INSTALL PARALLEL RACEWAYS IN COMMON TRENCH.



E-4

REVISIONS	
NAME	DATE

ILLINOIS DEPARTMENT OF TRANSPORTATION
F.A.I. 90/94 (DAN RYAN EXPRESSWAY)
TRAFFIC SIGNALS AT 63RD STREET AND
WENTWORTH AVENUE/ WELLS STREET
63RD STREET BRIDGE
ROADWAY LIGHTING IMPROVEMENTS

SCALE: 1"=30'
DATE: November 05, 2004
DRAWN BY: HAR
CHECKED BY: WDS

CTE ENGINEERS
CONSIDER TOWNSEND ENVIRONMENTAL ENGINEERS, INC.
303 EAST WACKER DRIVE, SUITE 600
CHICAGO, ILLINOIS 60601-5222, PHONE: (312) 938-0300

11/04/2004 09:01:30 AM