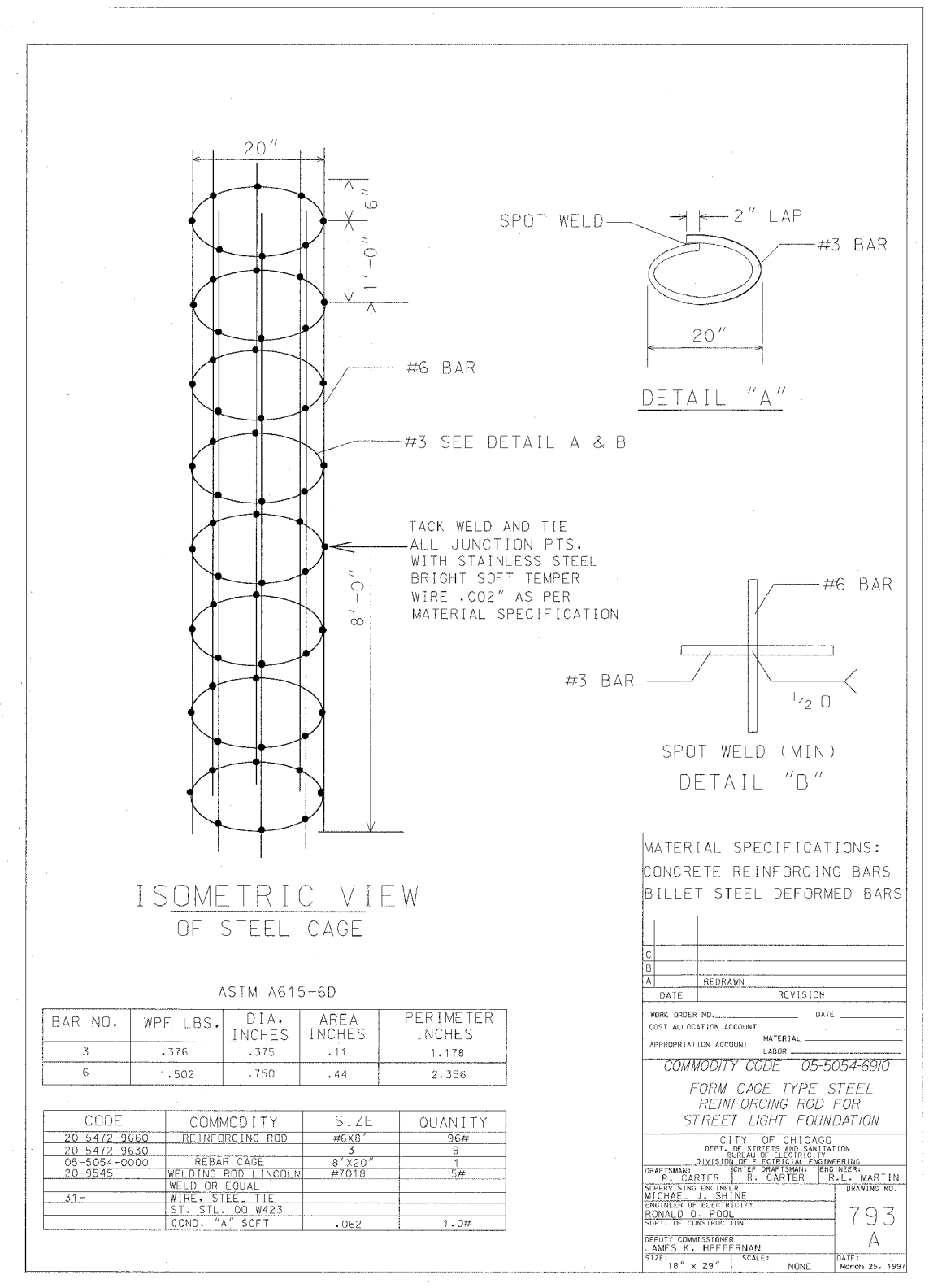


BALLAST HOUSING BASE WITH ANCHOR PLATES FOR 10" & 15" BOLT CIRCLE

CITY OF CHICAGO
DEPT. OF STREETS & ELECTRICITY
DIVISION OF ELECTRICAL ENGINEERING

REVISIONS

DATE: 11/04/2004



REVISIONS	NAME	DATE

11/04/2004 09:02:33 AM