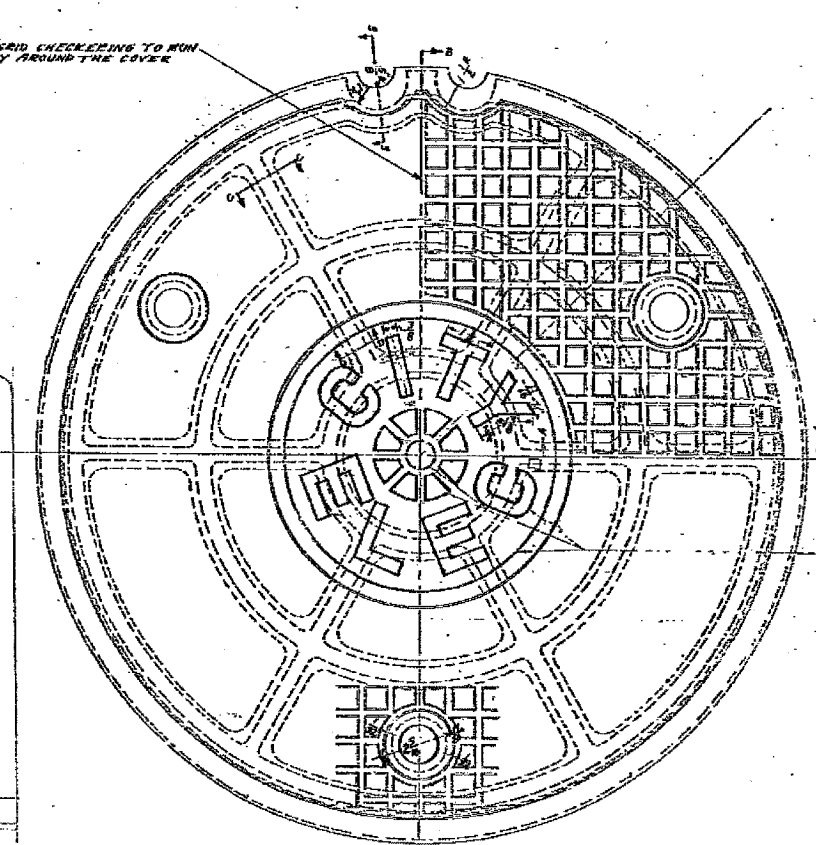
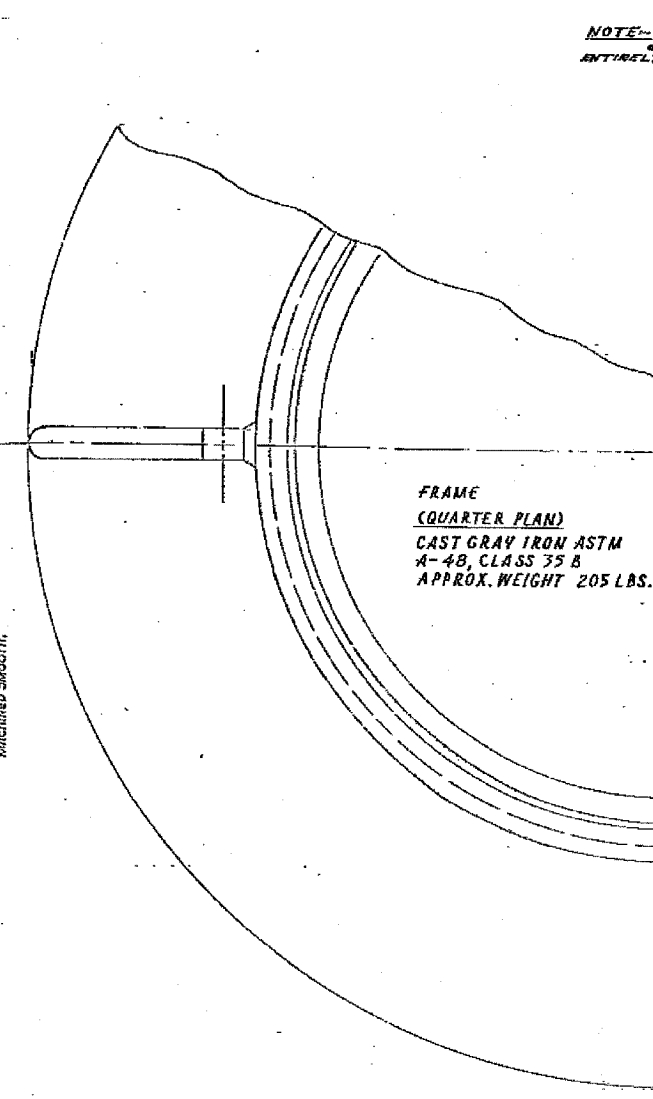
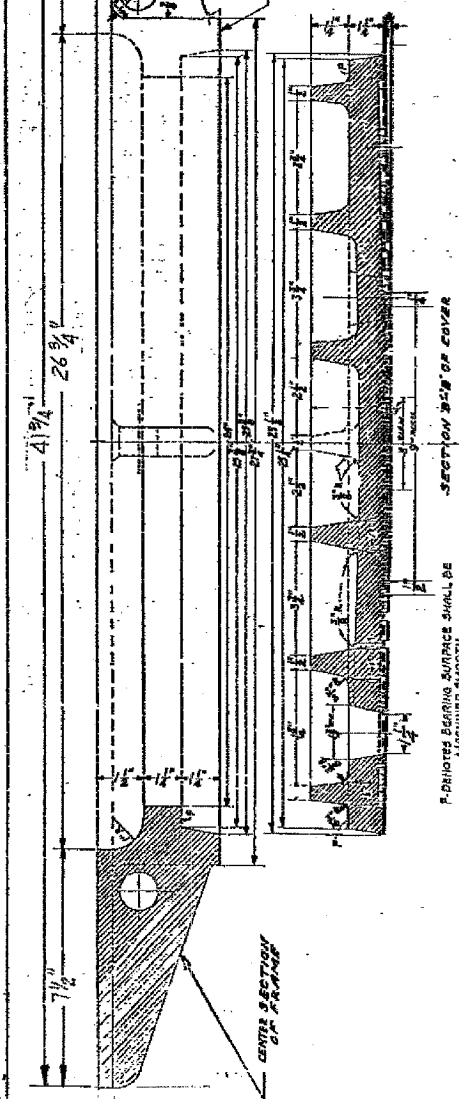
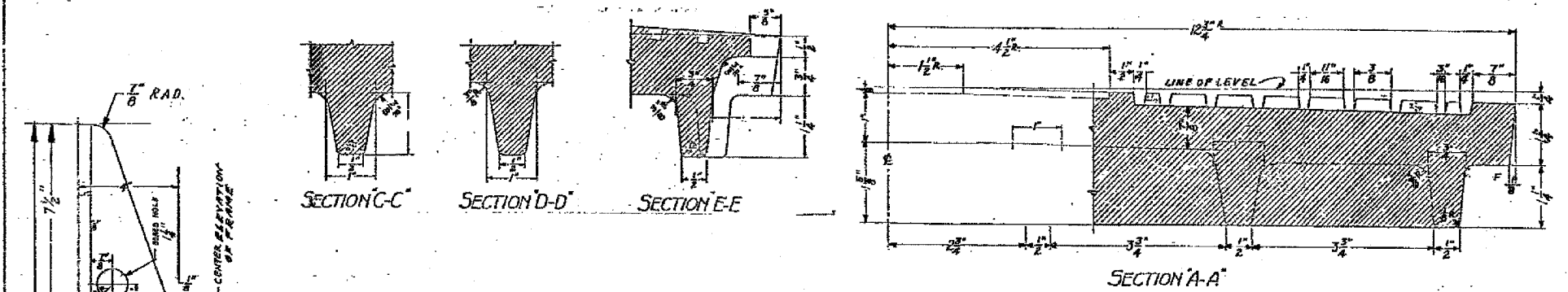


F.A.I. RTE.	SECTION	COUNTY	TOTAL SHEETS	SHEET NO.
90/94	2004-0991S	COOK	65	53
STA.		TO STA.		
FED. ROAD DIST. NO. 1		ILLINOIS FED. AID PROJECT		

62840



COVER (PLAN)
CAST IRON
APPROX. WEIGHT 200 LBS.

COMMODITY CODE
FRAME
COVER - 02 4574-5040

SUPERGEDES DWG# 10797
DATED 2-10-35

24" DIA. CIRCULAR MANHOLE
FRAME & COVER WITH 41 1/4" O.D.
FRAME

CITY OF CHICAGO
DEPT. OF STREETWORKS & SANITATION
BUREAU OF ELECTRICITY
DIVISION OF ELECTRICAL ENGINEERING

DESIGNED BY: A. JOHNSON	CHECKED BY: C. RESPINO	DRAWN BY: M. DE BARTOLO
SUPERVISING ENGINEER:	ELECT. ENGINEER:	DIST. IN CH.
ENGINEER OF ELECTRICITY:		
DATE: DATE TO ELECTRICITY:		872
QUANTITY CONTRACTED:		
REV:	SCALE:	DATE: 4-24-92

REVISIONS	
NAME	DATE

ILLINOIS DEPARTMENT OF TRANSPORTATION
F.A.I. 90/94 (DAN RYAN EXPRESSWAY)
TRAFFIC SIGNALS AT 63RD STREET AND
WENTWORTH AVENUE/ WELLS STREET
BOE STANDARD DETAILS

SCALE: NOT TO SCALE
DATE: November 05, 2004

DRAWN BY: HAR
CHECKED BY: WDS

11/04/2004 09:02:30 AM