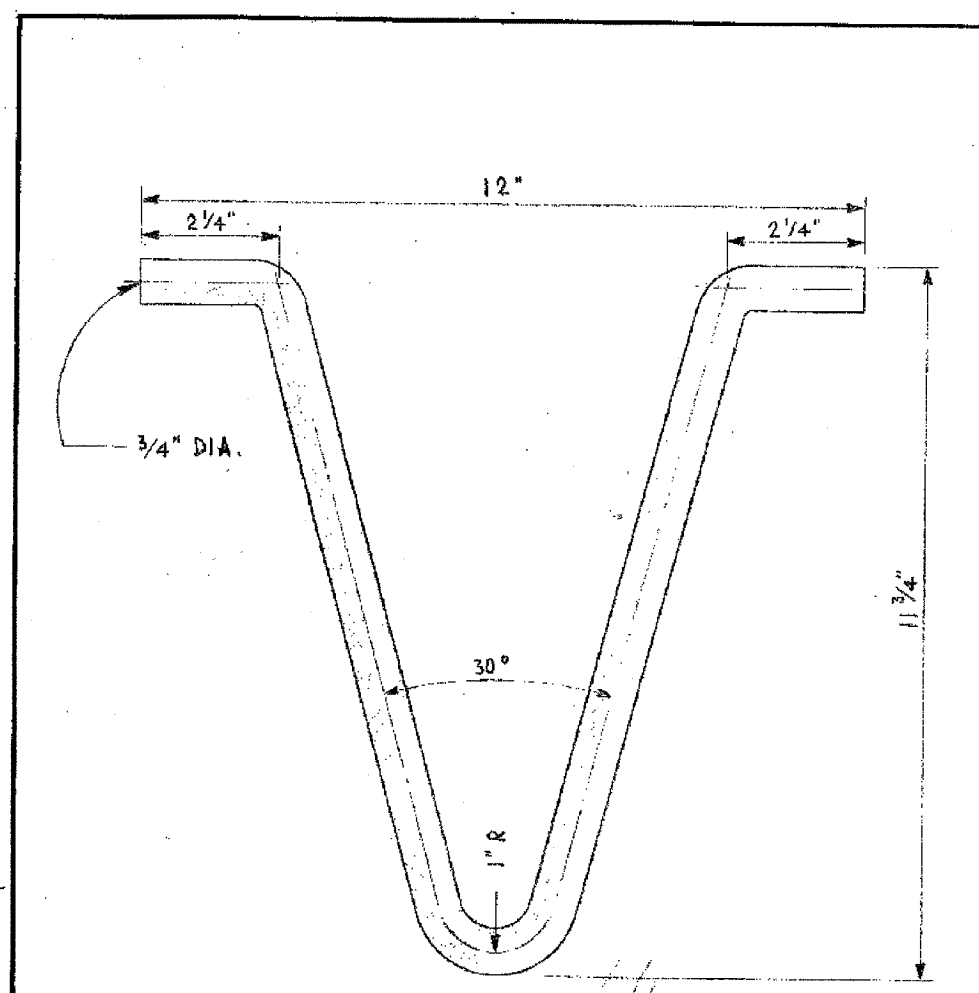


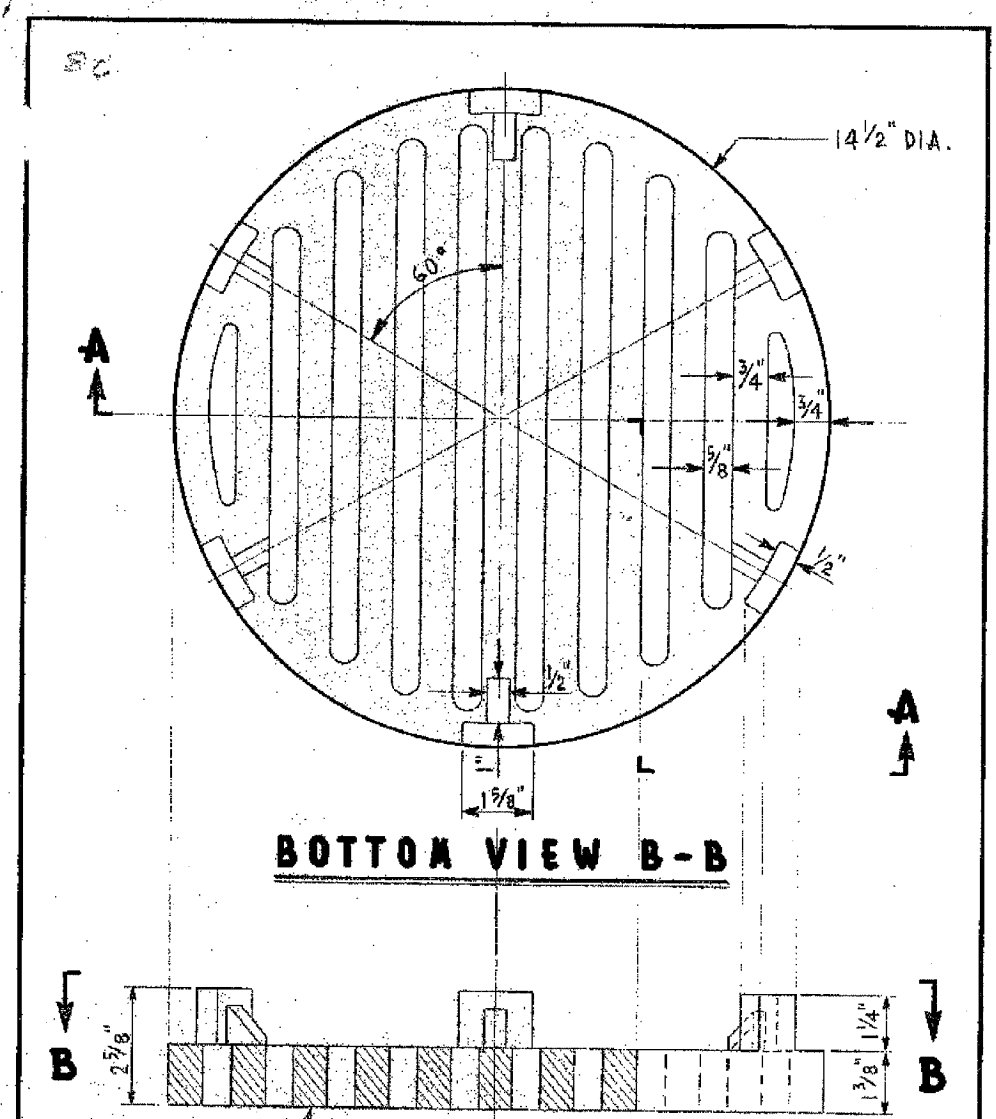
F.A.I. RTE.	SECTION	COUNTY	TOTAL SHEETS	SHEET NO.
90/94	2004-0997S	COOK	65	58
STA.		TO STA.		
FED. ROAD DIST. NO. 1		ILLINOIS FED. AID PROJECT		
62840				



**TOP VIEW**

**MATERIAL:**  
 S.A.E. 1035 HOT ROLLED STEEL.  
 HOT GALVANIZED ZINC COATING  
 0.002 INCH THICK OVER ENTIRE  
 SURFACE.

REVISED		CITY OF CHICAGO		
RE-DRAWN		DEPT. OF STREETS AND SANITATION BUREAU OF ELECTRICITY DIVISION OF ELECTRICAL ENGINEERING		
A	11-30-73	DRAWN	CHECKED	ENGINEER
B		E. GERULIS	M. SHINE	J. O'CONNOR
C		ENG. ELEC.		DRG. NO.
D		SIGNED <i>[Signature]</i>		<b>7878</b>
E		SIGNED <i>[Signature]</i>		
F		SIGNED <i>[Signature]</i>		
G		SIZE 8 1/2" X 14"	SCALE: 1/2" = 1"	DATE 11-30-73



**BOTTOM VIEW B-B**

**SIDE VIEW A-A**

**MATERIAL: CAST IRON**  
**APPROX. WT.: 34 LBS.**

REVISED		CITY OF CHICAGO		
A		DEPT. OF STREETS AND SANITATION BUREAU OF ELECTRICITY DIVISION OF ELECTRICAL ENGINEERING		
B		DRAWN	CHECKED	ENGINEER
C		E. GERULIS	M. SHINE	J. O'CONNOR
D		ENG. ELEC.		DRG. NO.
E		SIGNED <i>[Signature]</i>		<b>10792</b>
F		SIGNED <i>[Signature]</i>		
G		SIGNED <i>[Signature]</i>		
G		SIZE 8 1/2" X 14"	SCALE: 3/8" = 1"	DATE 11-30-73

REVISIONS	
NAME	DATE

ILLINOIS DEPARTMENT OF TRANSPORTATION  
 F.A.I. 90/94 (DAN RYAN EXPRESSWAY)  
 TRAFFIC SIGNALS AT 63RD STREET AND  
 WENTWORTH AVENUE/ WELLS STREET  
**BOE STANDARD DETAILS**

SCALE: NOT TO SCALE  
 DATE: November 05, 2004  
 DRAWN BY: HAR  
 CHECKED BY: WDS