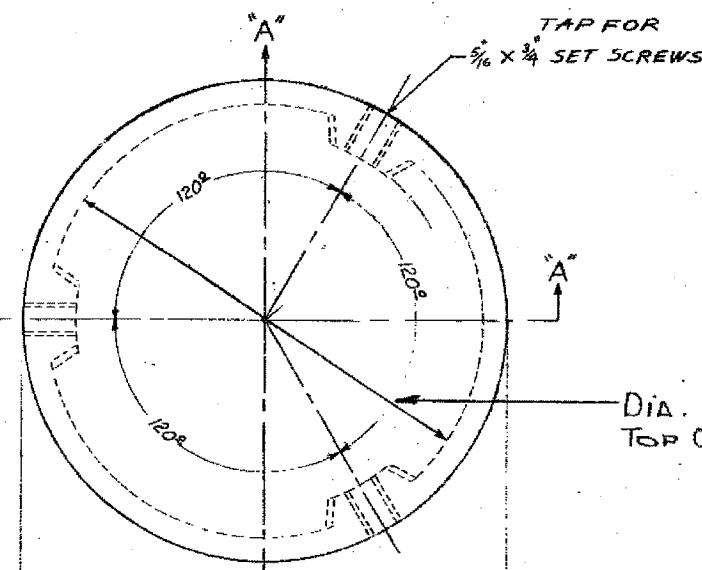


F.A.I. RTE.	SECTION	COUNTY	TOTAL SHEETS	SHEET NO.
90/94	2004-099TS	COOK	65	59
STA.		TO STA.		
FED. ROAD DIST. NO. 1 ILLINOIS FED. AID PROJECT				
62840				

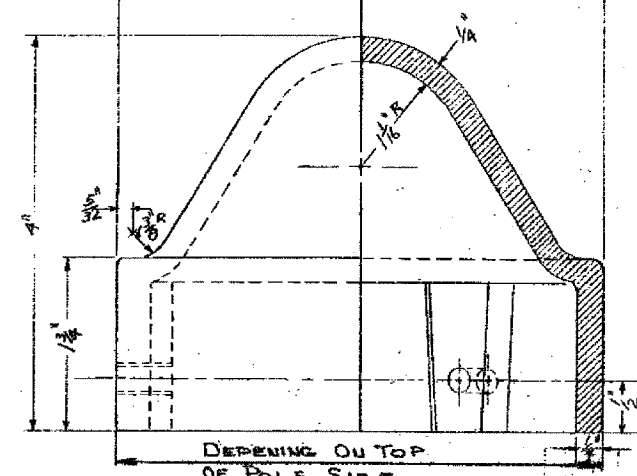


DIA. DEPENDING ON TOP OF POLE SIZE

MATERIAL - CAST IRON OR CAST ALUMINUM

NOTES

- A 3-3/8" 16x3/4" STAINLESS STEEL SET SCREWS TO BE FURNISHED WITH EACH TOP
- B. FOR USE ON THE FOLLOWING SIZE POLES:
 21'-6" - 3 AND 7 GAUGE
 29'-6" - 3 AND 7 GAUGE
 32'-6" - 3 AND 7 GAUGE
 34'-6" - 3 AND 7 GAUGE 10", 11" & 12 1/2" BASE DIAM.



SECTION "A-A"

CAST POLETOP FOR STEEL POLE

REVISED	CITY OF CHICAGO DEPT. OF STREETS AND SANITATION BUREAU OF ELECTRICITY DIVISION OF ELECTRICAL ENGINEERING		
A 2-13-85	DRAWN	CHECKED	ENGINEER
B	<i>D. NELLA</i>	<i>A. Della</i>	<i>A. Della</i>
C			
D			
E			
F			
G			
	16" X 21"	NOT TO SCALE	10-9-69

BOE-39

REVISIONS	
NAME	DATE

ILLINOIS DEPARTMENT OF TRANSPORTATION
 F.A.I. 90/94 (DAN RYAN EXPRESSWAY)
 TRAFFIC SIGNALS AT 63RD STREET AND
 WENTWORTH AVENUE/ WELLS STREET
 BOE STANDARD DETAILS

SCALE: NOT TO SCALE DRAWN BY: HAR
 DATE: November 05, 2004 CHECKED BY: WDS

m:\p\04068\elect\4-civil\9-civil\contract\908\boe\boe39-0320.dwg