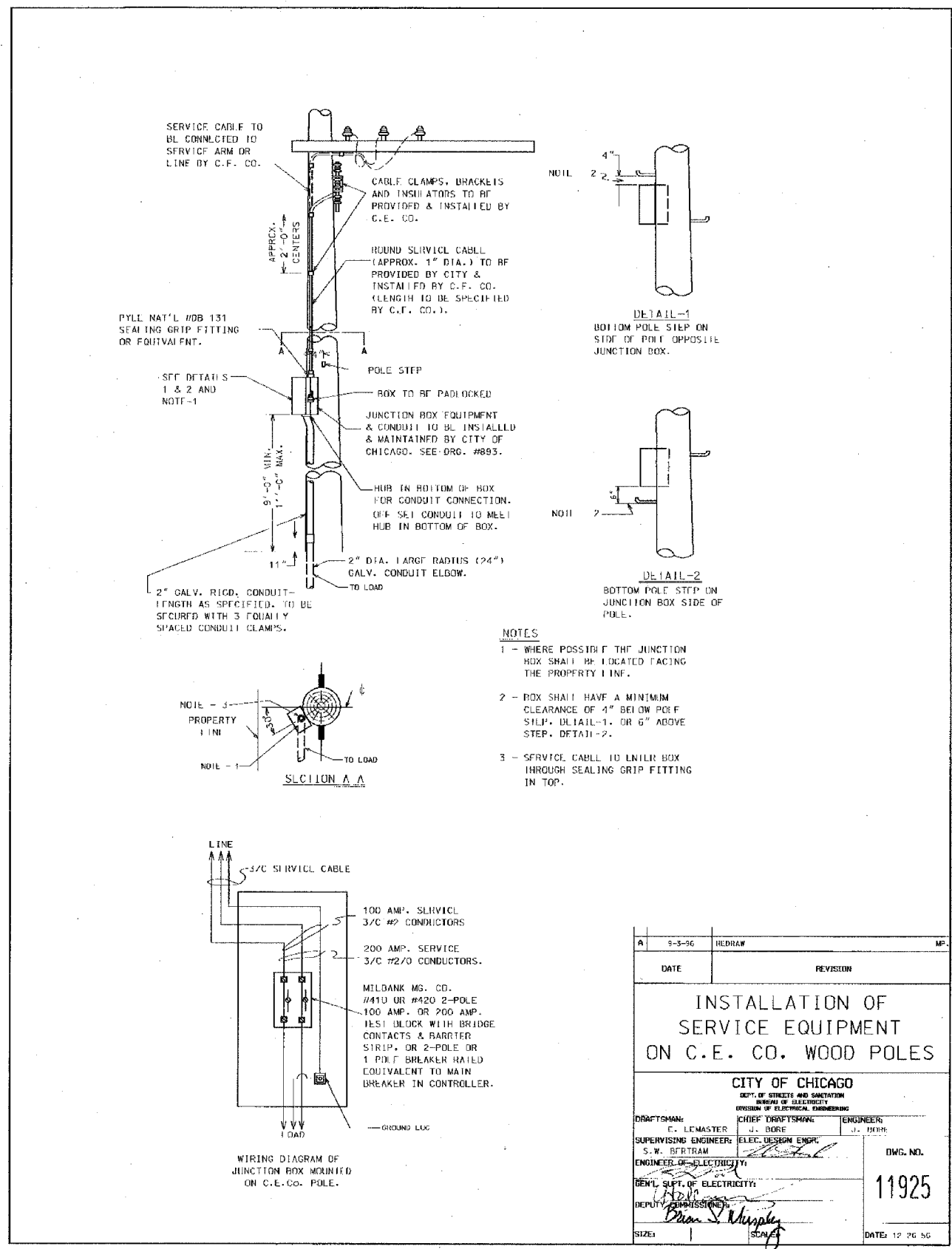


F.A.I. RTE.	SECTION	COUNTY	TOTAL SHEETS	SHEET NO.
90/94	2004-099TS	COOK	65	62
STA.		TO STA.		
FED. ROAD DIST. NO. 1		ILLINOIS	FED. AID PROJECT	
62840				



- NOTES**
- 1 - WHERE POSSIBLE THE JUNCTION BOX SHALL BE LOCATED FACING THE PROPERTY LINE.
 - 2 - BOX SHALL HAVE A MINIMUM CLEARANCE OF 4" BELOW POLE STEP, DETAIL-1, OR 6" ABOVE STEP, DETAIL-2.
 - 3 - SERVICE CABLE TO ENTER BOX THROUGH SEALING GRIP FITTING IN TOP.

A	9-5-96	HLDRAW	MP
DATE	REVISION		
INSTALLATION OF SERVICE EQUIPMENT ON C.E. CO. WOOD POLES			
CITY OF CHICAGO			
<small>DEPT. OF STREETS AND SANITATION BUREAU OF ELECTRICITY DIVISION OF ELECTRICAL ENGINEERING</small>			
DRAFTSMAN: C. L. MASTER	CHIEF DRAFTSMAN: J. DORR	ENGINEERS: J. DORR	
SUPERVISING ENGINEER: S. W. BERTRAM	ELEC. DESIGN ENGR.		
ENGINEER OF ELECTRICITY:			DWG. NO. 11925
DEPT. Supt. OF ELECTRICITY:			DATE: 12-26-96
DEPUTY COMMISSIONER:			
SIZE: 1	SCALE:		

REVISIONS	
NAME	DATE

ILLINOIS DEPARTMENT OF TRANSPORTATION
 F.A.I. 90/94 (DAN RYAN EXPRESSWAY)
 TRAFFIC SIGNALS AT 63RD STREET AND
 WENTWORTH AVENUE/ WELLS STREET
BOE STANDARD DETAILS

SCALE: NOT TO SCALE DRAWN BY: HAR
 DATE: November 05, 2004 CHECKED BY: WDS