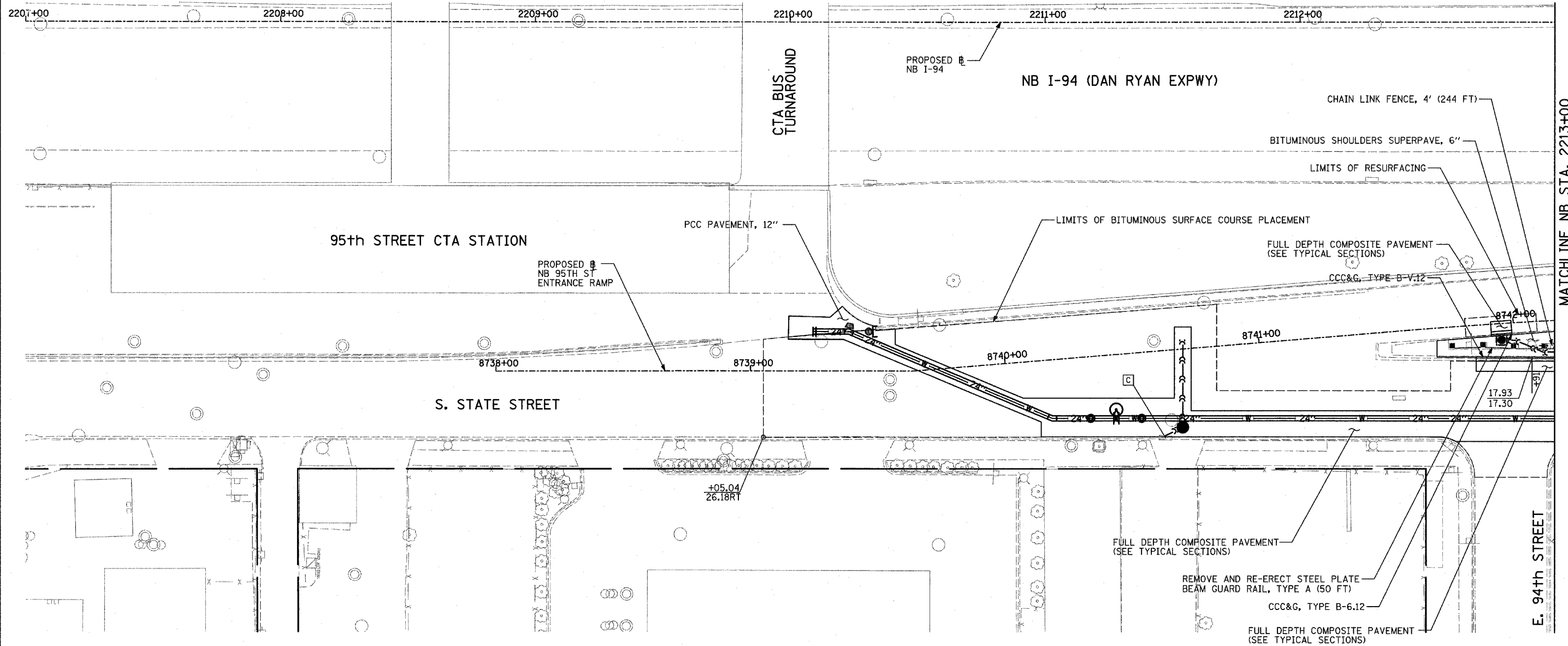
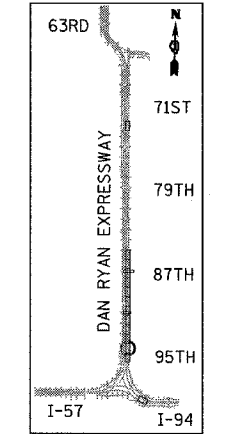


F.A.I. RTE.	SECTION	COUNTY	TOTAL SHEETS	SHEET NO.
94	1516.1-I-1	COOK	195	27
STA. 2016+35		TO STA. 2353+03		
FED. ROAD DIST. NO.	ILLINOIS	FED. AID PROJECT		

62872



MATCHLINE NB STA. 2213+00



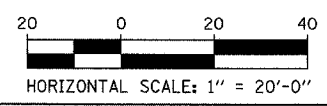
LOCATION MAP

**LEGEND:**

- C STRUCTURE TO BE CLEANED
- A FRAME AND GRATE TO BE ADJUSTED
- +XX.XX  
XX.XXRT STATION/OFFSET

**NOTES:**

1. SEE SEPARATE PLANS FOR WATER MAIN INSTALLATION DETAILS.
2. SEE SEPARATE PLANS FOR SEWER INSTALLATION DETAILS
3. ALL STATION/OFFSET/RADIUS CALLOUTS MEASURED TO EDGE OF PAVEMENT UNLESS OTHERWISE NOTED.
4. STATIONS AND OFFSETS MEASURED FROM MAINLINE ALIGNMENT.



REVISIONS	
NAME	DATE

ILLINOIS DEPARTMENT OF TRANSPORTATION  
**F.A.I. 94 (DAN RYAN EXPRESSWAY)**  
**PROPOSED PLAN - STATE ST.**  
**NB I-94 STA. 2207+00 TO 2213+00**

SCALE: 1"=20'  
DATE: OCTOBER 4, 2004

DRAWN BY: JJS  
CHECKED BY: MAG

**TYLIN** INTERNATIONAL

12/06/2004 07:56:16 AM