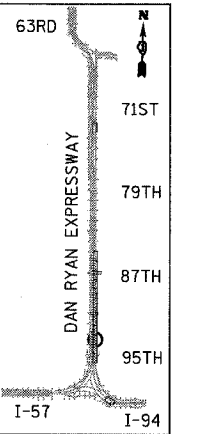
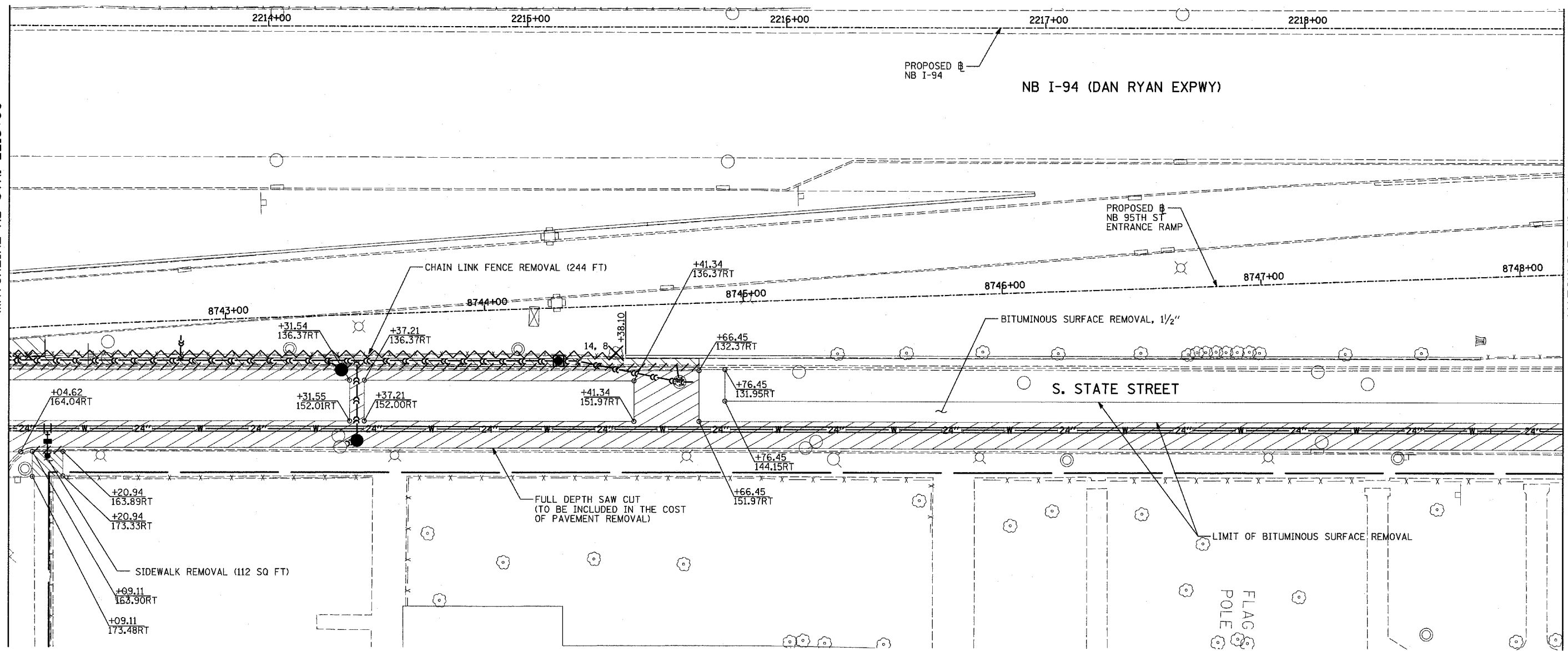


F.A.I. RTE.	SECTION	COUNTY	TOTAL SHEETS	SHEET NO.
94	1516.1-I-1	COOK	195	28
STA. 2016+35		TO STA. 2353+03		
FED. ROAD DIST. NO.		ILLINOIS FED. AID PROJECT		

62872

MATCHLINE NB STA. 2213+00

MATCHLINE NB STA. 2219+00



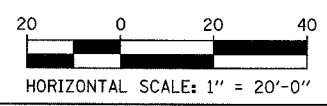
LOCATION MAP

NOTES:

- SEE SEPARATE PLANS FOR WATER MAIN INSTALLATION DETAILS.
- SEE SEPARATE PLANS FOR SEWER INSTALLATION DETAILS.
- ALL STATION/OFFSET/RADIUS CALLOUTS MEASURED TO EDGE OF PAVEMENT UNLESS OTHERWISE NOTED.
- STATIONS AND OFFSETS MEASURED FROM MAINLINE ALIGNMENT.

LEGEND:

- PAVEMENT REMOVAL
- PAVED SHOULDER REMOVAL
- SIDEWALK REMOVAL
- DRIVEWAY REMOVAL
- COMB CONC CURB & GUTTER REMOVAL
- CHAIN LINK FENCE REMOVAL
- RETAINING WALL / GUARDRAIL REMOVAL
- TREE REMOVAL (UNITS) (NO UNIT SHOWN = <6)
- LIGHT POLE & FOUNDATION REMOVAL
- +XX.XX / XX.XXRT STATION/OFFSET



REVISIONS	
NAME	DATE

ILLINOIS DEPARTMENT OF TRANSPORTATION
 F.A.I. 94 (DAN RYAN EXPRESSWAY)
EXISTING PLAN - STATE ST.
NB I-94 STA. 2213+00 TO 2219+00

SCALE: 1"=20'
 DATE: OCTOBER 4, 2004

DRAWN BY: JJS
 CHECKED BY: MAG

TYLIN INTERNATIONAL

11/12/2004 07:55:20 AM